

**MT. PROSPECT PARK DISTRICT  
1000 W. CENTRAL ROAD  
MOUNT PROSPECT, ILLINOIS 60056**

**MT. PROSPECT BOARD OF PARK COMMISSIONERS**

**MEETING SCHEDULE  
2016**

The Regular Board Meetings are scheduled on Wednesdays and will be held at Central Community Center, 1000 W. Central Road, Mount Prospect, Illinois at 7:00p.m.

**JANUARY 20, 2016**  
(3<sup>rd</sup> Wed.)

**JULY 27, 2016**

**FEBRUARY 17, 2016**  
(3<sup>rd</sup> Wed.)

**AUGUST 24, 2016**

**MARCH 16, 2016**  
(3<sup>rd</sup> Wed.)

**SEPTEMBER 28, 2016**

**APRIL 27, 2016**

**OCTOBER 26, 2016**

**MAY 25, 2016**

**NOVEMBER 16, 2016**  
(3<sup>rd</sup> Wed.)

**JUNE 22, 2016**

**DECEMBER 14, 2016**  
(2<sup>nd</sup> Wed.)

*Approved: December 16, 2015*

# ***TABLE OF CONTENTS***

## **REGULAR BOARD MEETING**

**May 25, 2016**

### **AGENDA**

- I. MINUTES**
- II. EXECUTIVE REPORT**
- III. PARKS FOUNDATION REPORT**
- IV. FINANCIAL REPORT**
- V. UNFINISHED BUSINESS**
- VI. NEW BUSINESS**

MT. PROSPECT PARK DISTRICT  
1000 W. CENTRAL ROAD  
MOUNT PROSPECT, ILLINOIS 60056

**REGULAR BOARD MEETING**

MEMO TO: MT. PROSPECT PARK DISTRICT  
BOARD OF COMMISSIONERS  
PRESS  
PUBLIC

FROM: STEVE KURKA, PRESIDENT

DATE: MAY 20, 2016

RE: REGULAR PARK BOARD MEETING  
MAY 25, 2016 - 7:00 P.M.  
CENTRAL COMMUNITY CENTER  
1000 W. CENTRAL, MOUNT PROSPECT, IL

**AGENDA**

CALL TO ORDER

ROLL CALL

PLEDGE OF ALLEGIANCE

CHANGES OR ADDITIONS TO AGENDA

APPROVAL OF AGENDA

APPROVAL OF MINUTES: REGULAR BOARD MEETING: APRIL 27, 2016

PUBLIC COMMENT

EXECUTIVE REPORT

- Program Summary & Profile – Mt. Prospect Community Band • Monty Adams, Music Director

PARKS FOUNDATION REPORT

FINANCIAL ADVISOR'S REPORT

RATIFICATION OF ACCOUNTS PAYABLE: APRIL 2016

UNFINISHED BUSINESS

A. Big Surf Pool – Potential Renovation • (Discussion)

NEW BUSINESS

A. Clearwater & WeGo Playground Design Approval • (Discussion & Potential Action)

B. Golf Advisory Alternative • (Discussion & Potential Action)

APPROVAL ITEMS

ADOPTION ITEMS

PUBLIC COMMENT

COMMENTS/MATTERS FROM COMMISSIONERS

CLOSED SESSION

SECTION 2(c) (5): For the Purpose of Discussing the Purchase or Lease of Real Property for the use of the Park District, including whether a Particular Parcel should be acquired.

TAKE ACTION, IF ANY ON MATTERS DISCUSSED IN CLOSED SESSION

ADJOURNMENT



## Unapproved

## Regular Board Meeting

A Regular Meeting of the Mt. Prospect Park District, Cook County, Illinois, was held on Wednesday, April 27, 2016 at Central Community Center Facility of said Park District. President Kurka called the meeting to order at 7:00 p.m. On roll call, the following officers and commissioners were present:

Steve Kurka  
Tim Doherty  
Bill Klicka  
Bill Starr  
Mike Murphy

## Administrative Staff:

Greg Kuhs, Executive Director  
Brett Barcel, Director of Golf Operations  
Jim Jarog, Director of Parks & Planning  
Brian Taylor, Director of Recreation  
Barry Kurcz, Director of Business Services and Human Resources  
Ruth Yueill, Superintendent of Community Relations & Marketing  
Teri Wirkus, Executive Professional Compliance Manager  
Ann Zimmerman, Cultural Arts Manager  
Amy Hubert, Artistic Director

## Professionals:

Tom Hoffman, Attorney  
Lee Howard, GAI  
Brad O'Sullivan, GAI

## Visitors:

Louis Goodman

**CHANGES OR ADDITIONS TO AGENDA**

President Kurka recommended the Board go into a Closed Session near the end of the Agenda for: Section 2(c)(1): Personnel-To discuss the Appointment, Employment, Compensation, Discipline, Performance, or Dismissal of One or More Specific Employees of the Public Body. Also recommended the Board move Item A. under Adoption Items (Non-Exclusive Lease between Grayhawk 4, LLC and Mt. Prospect Park District for Use of the Mount Prospect Ice Arena) on the Agenda to follow Public Comment.

The Board all agreed and was carried by unanimous voice approval.

**APPROVAL OF AGENDA**

Commissioner Starr motioned to approve the amended agenda; seconded by Commissioner Klicka.

Discussion: None

<b><u>Roll Call Vote</u></b>	<b>Ayes</b>	<b>Nays</b>	<b>Absent</b>
Commissioner Kurka	X		
Commissioner Doherty	X		
Commissioner Klicka	X		
Commissioner Starr	X		
Commissioner Tenuta			X
Commissioner Massie			X
Commissioner Murphy	X		

Motion passed.

**APPROVAL OF MINUTES**

Commissioner Murphy motioned to approve the minutes from the Special Board Meeting on March 16, 2016; seconded by Commissioner Klicka.

Discussion: None

<b><u>Roll Call Vote</u></b>	<b>Ayes</b>	<b>Nays</b>	<b>Absent</b>
Commissioner Kurka	X		
Commissioner Doherty	X		
Commissioner Klicka	X		
Commissioner Starr	X		
Commissioner Tenuta			X
Commissioner Massie			X
Commissioner Murphy	X		

Motion passed.

Commissioner Starr motioned to approve the amended minutes from the Regular Board Meeting on March 16, 2016; seconded by Commissioner Klicka.

<b><u>Roll Call Vote</u></b>	<b>Ayes</b>	<b>Nays</b>	<b>Absent</b>
Commissioner Kurka	X		
Commissioner Doherty	X		
Commissioner Klicka	X		
Commissioner Starr	X		
Commissioner Tenuta			X
Commissioner Massie			X
Commissioner Murphy	X		

Motion passed.

**PUBLIC COMMENT**

Louis Goodman addressed the Board and stated he attended the Coffee with the Village Council and a patron questioned the standing water at the Melas Park Dog Park. Executive Director Kuhs stated the Dog Park will be discussed later in the meeting.

**ADOPTION ITEM**

- A. Non-Exclusive Lease Between Grayhawk 4, LLC and Mt. Prospect Park District for Use of the Mount Prospect Ice Arena

Executive Director Greg Kuhs explained that staff has been working on plans to offer and promote skating programs at the new Mount Prospect Ice Arena. The construction of the ice arena is underway and the anticipated completion/opening date is September 2016. Staff handed out and reviewed ice time costs for area ice rinks and noted the reasons for the variation in ice time costs between private and public rinks. Nick Papanicholas, Sr. was on hand to answer any questions and was happy with the positive feedback that the ice arena was generating.

Commissioner Starr remarked how exciting it was to have an ice rink in Mt. Prospect.

President Kurka stated it's great for everyone and the youth hockey program and hoped we were conservative in the profit projections. Director Taylor said that it was a conservative projection but expects a higher return.

Commissioner Doherty thanked Mr. Papanicholas for willing to partner with the park district and he looks forward to the future of the ice rink.

Commissioner Murphy and Director Taylor discussed time frame and the projection numbers for the project.

**MOTION**

Commissioner Doherty moved to approve a Non-Exclusive Lease between Grayhawk 4, LLC and Mt. Prospect Park District for the Use of the Mount Prospect Ice Arena; seconded by Commissioner Starr.

Discussion: None

<b><u>Roll Call Vote</u></b>	<b>Ayes</b>	<b>Nays</b>	<b>Absent</b>
Commissioner Kurka	X		
Commissioner Doherty	X		
Commissioner Klicka	X		
Commissioner Starr	X		
Commissioner Tenuta			X
Commissioner Massie			X
Commissioner Murphy	X		

Motion passed.

**EXECUTIVE REPORT**

Ann Zimmerman, Cultural Arts Manager introduced Amy Hubert, Artistic Director for the Dance Program and Amy reviewed the following with the board:

- summary and history of the dance program
- rivals any private studios with our top notched instructors and curriculum
- 945 registrations in the dance program
- accommodates ages 2 1/2 to adult with a progressive program to the advanced levels
- some students have danced professionally (Nut Cracker) and continued to dance in college
- participants receive experience performing on stage through our professional performances
- Mt. Prospect School of Classical Ballet presents: “The Legend of Mulan” recitals on May 6 & 7 at the Schaumburg Prairie Center for the Arts
- Studio Impulse(Tap & Jazz) presents: “What Dreams are Made Of” performances on May 20 & 21 at the Forest View Auditorium
- Young children’s performances(Pre-ballet & Mini-medley Kindergarten combo) on June 4 & 5 at the Forest View Auditorium
- Great parent volunteers at the dance recitals
- First time –implemented online ticket purchases- working out very well

President Kurka was impressed with the registration numbers of the dance program and teaching such young children at 2 1/2 year olds.

Executive Director Greg Kuhs reviewed the following items:

- Damaged baseball backstops replacement has been completed at all locations.
- Parking Lots: Seal coating and crack filling at Meadows, Lions, and Friendship will happen in May and should take 5 to 7 days depending on weather.
- Path Improvements: path repairs and/or replacement at Clearwater and Kopp Parks are scheduled to start in mid-May.
- Parking Lot Renovation: replacement of asphalt surfaces, some walk, curb and gutter at Center Community Center, taking place mid-July through mid-August.
- Working on replacing the Pool Pak compressor at RecPlex. Have had some issues with the unit – working on getting things resolved.
- Conceptual drawings for We-Go and Clearwater Playgrounds are being developed: next step would be to schedule a public meeting for resident’s input then present to the board for review. Commissioner Starr asked how the district gets the word out to the neighborhood. Executive Director Kuhs replied the district posts notices and delivers flyers in the neighborhood.
- The new website - golfmtprospect.com - was activated earlier this week.
- The Sharks (MPPD swim team) won the Central Division Conference Meet and qualified over 50 swimmers for the Conference Championship Meet.
- Adult Softball Classic League: have 17 teams in the league.
- Baseball, softball and soccer have all started.
- Basketball, gymnastics and Sports-kids classes: Increased in participation.
- Preschool registration: 126 registered for next year which is a 24% increase from 2015.
- The Spring Concert at Trinity Lutheran Church was a huge success. Monty Adams, Band Director will be attending our May Board Meeting to give an overview of the Community Band and his background.
- Annual Spring Plant Sale: May 7<sup>th</sup> at the Friendship Park Conservatory.

- Canine Commons Dog Park: MPPD and AHDP maintenance crews created a transition area in the large dog park enclosure which has received positive comments back from members.
- Social Media: staff created a new YouTubeChannel to house our MPTV shows and other videos.
- Constant Contact open emails rate is up 33%.
- FGM Designers: Some additional Big Surf Options will be presented at the May Board Meeting.

### **PARKS FOUNDATION REPORT**

Ruth Yueill, Executive Director of the Parks Foundation stated:

- 2016 Scholarship applications are now available with the deadline on Monday, June 13<sup>th</sup>.
- The MPPD Foundation is offering three, \$1,500 scholarship for eligible employee or/and children of employees.
- Foundation's May Meeting welcomes new members: Wednesday, May 18th from 7-9 p.m. at Friendship Park Conservatory.
- Saturday, August 27th: Parks Foundation Cabaret Night at Friendship Park Conservatory

### **FINANCIAL ADVISORS REPORT**

Lee Howard, GAI, reviewed the year to date departmental expenditures analysis, revenue trends and profitability of the District's key revenue facilities.

Commissioner Murphy and Director Barcel discussed Golf Course passes and how the sales compared to previous years. Director Barcel is very positive that when the weather gets better revenue will also increase.

### **RATIFICATION OF ACCOUNTS PAYABLE**

Commissioner Klicka motioned to ratify March Accounts Payable checks and EFT's in the amount of \$615,322.20 as listed on the March Check Registers; seconded by Commissioner Murphy.

Discussion: None

<b><u>Roll Call Vote</u></b>	<b>Ayes</b>	<b>Nays</b>	<b>Absent</b>
Commissioner Kurka	X		
Commissioner Doherty	X		
Commissioner Klicka	X		
Commissioner Starr	X		
Commissioner Tenuta			X
Commissioner Massie			X
Commissioner Murphy	X		

Motion passed.

**RATIFICATION OF PAYROLL**

Commissioner Klicka motioned to ratify March Payroll checks and Direct Deposits in the amount of \$314,422.99 as listed in this report; seconded by Commissioner Doherty.

Discussion: None

<b><u>Roll Call Vote</u></b>	<b>Ayes</b>	<b>Nays</b>	<b>Absent</b>
Commissioner Kurka	X		
Commissioner Doherty	X		
Commissioner Klicka	X		
Commissioner Starr	X		
Commissioner Tenuta			X
Commissioner Massie			X
Commissioner Murphy	X		

Motion passed.

**UNFINISHED BUSINESS**- None

**NEW BUSINESS**- None

**APPROVAL ITEMS**

**A. Acceptance/Rejection of Bids for Fitness Center Equipment - Midwest Commercial Fitness • Direct Fitness Solutions • Life Fitness**

Executive Director Kuhs summarized the purpose for the fitness center equipment replacement.

**MOTION**

Commissioner Starr moved to approve the purchase of fitness center equipment as presented from the following vendors:

- Midwest Commercial Fitness: \$29,480.00
- Direct Fitness Solutions: \$27,615.00
- Life Fitness, a division of Brunswick Corp.: \$19,156.07

Seconded by Commissioner Murphy

Discussion: None

<b><u>Roll Call Vote</u></b>	<b>Ayes</b>	<b>Nays</b>	<b>Absent</b>
Commissioner Kurka	X		
Commissioner Doherty	X		
Commissioner Klicka	X		
Commissioner Starr	X		
Commissioner Tenuta			X
Commissioner Massie			X
Commissioner Murphy	X		

Motion passed.

**B. Acceptance/Rejection of Change Order #1 - Parking Lot Maintenance • Hastings Asphalt Services**

Executive Director Kuhs reviewed the history and reason for the change order.

**MOTION**

Commissioner Murphy moved to approve Change Order #1 for additional Sealcoating, crack filling, and patching of the RecPlex northwest and southwest parking lots for Hastings Asphalt Services in the amount of \$15,592.40 which is based on the Unit Pricing for the bid; seconded by Commissioner Starr.

Discussion: None

<b><u>Roll Call Vote</u></b>	<b>Ayes</b>	<b>Nays</b>	<b>Absent</b>
Commissioner Kurka	X		
Commissioner Doherty	X		
Commissioner Klicka	X		
Commissioner Starr	X		
Commissioner Tenuta			X
Commissioner Massie			X
Commissioner Murphy	X		
Motion passed.			

**COMMENTS/MATTERS FROM COMMISSIONERS**

None

**Adjournment to Closed Session**

Commissioner Doherty motioned to adjourn to closed session for Section 2(c)(1): Personnel- To Discuss the Appointment, Employment, Compensation, Discipline, Performance, or Dismissal of One or More Specific Employees of the Public Body; seconded by Commissioner Starr at 8:05 p.m.

<b><u>Roll Call Vote</u></b>	<b>Ayes</b>	<b>Nays</b>	<b>Absent</b>
Commissioner Kurka	X		
Commissioner Doherty	X		
Commissioner Klicka	X		
Commissioner Starr	X		
Commissioner Tenuta			X
Commissioner Massie			X
Commissioner Murphy	X		
Motion passed.			

**Reconvene from Closed Session**

Open Session was reconvened at 8:09 p.m.

**TAKE ACTION, IF ANY ON MATTERS DISCUSSED IN CLOSED SESSION**

None.

**ADJOURNMENT**

There being no further business to discuss, Commissioner Starr moved to adjourn the Regular Board Meeting at 8:10 p.m.; seconded by Commissioner Murphy and carried by unanimous voice vote.

Respectfully submitted,

---

William J. Starr, Secretary



## **Executive Director Monthly Report**

### **Greg Kuhs • May 2016**

---

#### **Program Summary & Profile – Mt. Prospect Community Band – Monty Adams, Music Director**

Monty Adams, our new Music Director for the Community Band, will be attending the Board Meeting to provide a summary and profile of the Mt. Prospect Community Band offered by the Mt. Prospect Park District.

As you know, Monty is our new Music Director and we have a full complement of summer concerts planned for the Community Band to celebrate the band's 40 years of music. Below is a schedule of the upcoming Monday performances for the band:

May 30 – Memorial Day Ceremony – Lions Park  
June 13 – Strike Up the Band  
June 20 – A Trip to Spain  
June 27 – That's Not Funny That's Shtick  
July 11 – Prospect Pops Parade  
July 18 – A Night at the Opera  
July 25 – Christmas in July

#### **FY 2015 Annual Comprehensive Financial Report (Annual Audit)**

Our auditors (Knutte & Associates) will be attending the June 22 Board Meeting to present the FY 2015 audit to the Board for approval. Once the audit is finished and approved by the Board, the Annual Treasurer's Report will be filed with the county clerk's office, and both documents will be posted on our website.

#### **Park District Annual Meeting**

As part of our June 22 Regular Board Meeting, the Board needs to hold the Annual Meeting for the park district. This is when the President and Vice-President for the Board need to be elected and the Secretary and Treasurer are appointed.

#### **Executive Director - May 25<sup>th</sup> Board Meeting**

I spoke to President Kurka to request that I be excused from attending the May 25<sup>th</sup> Board Meeting. We did meet prior to the Board Meeting to review items that will be on the agenda for action and/or discussion.

During the meeting, staff in attendance will provide some highlights in their respective areas during the Executive Report.

- Brian Taylor will lead the Big Surf agenda item (Unfinished Business).
- Jim Jarog will handle the Clearwater & WeGo Playground agenda item (New Business).
- Brett Barcel will discuss the Golf Advisory alternative item (New Business).

## **Parks & Planning Monthly Report**

### **Jim Jarog • May 2016**

---

#### **2016 Pavement Improvements**

The 2016 Parking Lot Maintenance project (seal coating and crack filling of Meadows, Lions and Friendship Park lots) has begun. Patching at all locations has been completed. Additional crack filling and catch basin repair was necessary at Rec Plex due to site conditions that had changed from the initial engineering inspection which took place late fall of 2015. The final seal coating and striping is expected to be complete by the week of May 23<sup>rd</sup> depending on weather.

The 2016 Path Improvements (path repairs and replacement at Clearwater and Kopp Parks) are also in process. The base and finish courses of asphalt for the Clearwater park walking path are in place. No base aggregate replacement was necessary at this location. At Kopp Park, some of the base aggregate was in poor shape requiring localized replacement. At the time of this report the binder course of asphalt is scheduled to be installed by May 20<sup>th</sup> with the finish course being installed the week of May 23<sup>rd</sup>. Site turf restoration for both locations will occur after all asphalt surfaces have been installed and heavy equipment is no longer needed. A small area at Kopp will most likely need to be pulled from the contract due to Com Ed's inability to provide a timely review and approval for a small section of new path. If this area is eventually approved staff will request to include this area in next year's path improvement project.

The 2016 Central Community Center Parking Lot Renovation (replacement of asphalt surfaces and some walk, curb, and gutter) is scheduled to take place Mid July through Mid-August.

#### **Pool Pak Compressor**

Previously the Board had been notified that staff has been working with a contractor on the replacement of a failed compressor for the Rec Plex Pool Dehumidification unit (Pool Pak). The failed compressor was replaced twice by this contractor and both replacements also failed. After several discussions with this contractor and Pool Pak it has been decided that we would be best to pursue another company to diagnose and properly repair the Pool Pak unit. Although the initial contractor is listed as being certified on the repair of Pool Pak units we believe they may not have adequate experience on these units. We have not released any funds to this contractor at this time. We are now in the process of securing the services of a technician that was one of the original installers of the Pool Pak unit back in 2008. We are very confident of this individual's capabilities. This contractor was not chosen originally due to the fact that their quote was higher than the least expensive contractor who was unable to perform the work to our satisfaction.

#### **Lions Rec Center Compressor**

In September of 2014 the air conditioning compressor at the Lions Recreation Center was replaced. The compressor carried a one year warranty when it was installed. Unfortunately we recently found out that this compressor has failed and will need to be replaced again. After speaking to the installing contractor they are unwilling to provide assistance without additional compensation as the compressor is over the one year warranty provided at the time of purchase in 2014.

Staff has secured a replacement compressor from the Trane Corporation. Trane is the manufacturer of the chiller equipment at Lions Rec Center. Trane offers factory refurbished compressors with an option to purchase an extended warranty up to 5 years. There are no new compressors available for these units as they are no longer in production. Since the original installing contractor was unwilling to negotiate a reduced rate for installation we will be using a different company that has extensive history with the Lions Rec HVAC system.

## ***Parks & Planning Monthly Report***

### ***Jim Jarog • May 2016***

---

### **Playground Renovations**

Staff held a public input meeting on May 12<sup>th</sup> for both the Clearwater and We-Go playground projects. This meeting was well attended and we received much input from interested residents. As a result of the meeting staff has changed the design slightly for both locations in an attempt to incorporate some of the feedback that was received. The revised drawings are included in your packet for your review and consideration (New Business item). Pending Board approval to proceed with these projects we will move forward into the bidding phase for both locations. Staff is attempting to bid the projects together to obtain the best pricing. We are hoping to present the results from these bids at the July Board meeting for your review and consideration. If approved, the construction is anticipated to start in August of 2016.

### **Grounds Department**

- Soccer fields have been aerated and fertilized for the season
- Ballfields have been sprayed for weeds, dragged and prepped for seasonal play
- Batting tunnels have been installed at Lions and Meadows ballfields
- The Canine Commons turf was aerated and seeded. Maintenance of this location was turned back over to AHPD on May 1<sup>st</sup>, 2016
- Mulching of planting beds at parks and facilities is in process
- Staff is doing their best to keep up with mowing operations. Recent rains have resulted in an increase in turf growth
- Quarterly playground inspections have taken place

### **Buildings Department**

- Rink area drywall and boards have been repaired at CCC
- Pool de-winterization is underway and staff has begun to prepare the pools for the 2016 season
- Rec Plex circulating pump and boiler repairs were completed
- Athletic lighting repairs are in process at multiple outdoor locations.
- Installed new bathroom partitions and repaired main electric distribution panel at MSD
- Installed aerator at Clearwater Park for the 2016 season
- Big Surf and Meadows Pools have been serviced and are filled and circulating for the 2016 season

## ***Parks & Planning Monthly Report***

### ***Jim Jarog • May 2016***

---

#### Fleet Services

- New Toro greens mowers were delivered and set up for use. Staff was trained on their operation
- Performed safety inspections on trucks 25,38, and Van 1
- Golf maintenance garage cleanup and reorganization is ongoing
- Trucks 27, 29 and 30 were brought in for brakes, batteries and other required service
- Several parks mowers were brought in for blade changes and spindle service
- Awaiting delivery of new compactor garbage truck that was approved at the February Board Meeting

#### Miscellaneous

- To date in 2016 there have been approximately 260 internal work order requests submitted to the Parks and Planning Division for completion.

# **Golf Operations Monthly Report**

## **Brett Barcel • May 2016**

---

### **Golf Numbers**

Year to date through April we are 4% short of 2013 revenue. As stated last month, this is due to low pass sales and we will catch up with green fee revenue as the season progresses. So far this month we've had almost six inches of rain when the average is about 1.6 inches leaving us with a very slow start. Despite the rain we have had cart sales each and every day and we were only on cart paths for two days. So, the drainage is working! Feedback from the course is still incredibly strong. We now have a four star plus rating on Golf Advisor. The first two members Golf Digest Ratings team played late April. They raved about the golf course and historical design of the greens. More regulars, our harshest critics, seem to be coming around as they are learning and accepting the nuances of the design.

### **On Course**

The golf course itself is in very good shape for the season, we are growing in more and more and the greens are outstanding. Work is complete on the replacement of faulty irrigation heads. As a result, there were some dry days in late April when we couldn't irrigate the course. Two very old half dead ash trees were removed from the 15<sup>th</sup> hole last week. They became a safety hazard and according to the tree service were infected by the ash bore. We will plant some trees to replace them. The range tee is open on grass and is working great. The overflow spot in front of #15 green is still washing out. This is an engineering design flaw that we are still dealing with. Once grass is established it should be fine. This area cannot simply be raised because this would make the overflow go into the green side bunkers and up the side of the green. The new greens mowers are in use and are working great.

### **Golf Course**

The golf course has come through early spring well. This time last season one third of the course was dirt! We are still growing in a few areas and we are beginning to sod some stubborn areas. We also decreased the size of some bunkers to allow increased access on and off the greens, improving some high traffic areas. The reshaping of #7 green and #5 green has gone well. They are both open for play with limited use, and we will be able to cut cups in these areas soon. Midwest Irrigation is repairing the defective irrigations heads and will be completed soon. The new greens mowers have been delayed due to some parts options.

### **Golf Lessons**

We are looking forward to our best summer ever with junior golf lessons beginning in early June. Our camps now include the Prospect Girls High School Golf Camp that will be staffed by both coaches and our PGA staff. Our extended practice areas will allow us to grow programming in this area for years to come. Eric Pick our new PGA teaching pro has had four golf clinics and has been well received by both the patrons and staff.

## ***Golf Operations Monthly Report*** ***Brett Barcel • May 2016***

---

### **GolfNow Billboard**

GolfNow will be using our golf course photo as the backdrop for their billboard on the Kennedy expressway in Bucktown. This is free of charge to us and should serve as a phenomenal promotional piece. See the attached photo.

### **Family Golf Night**

Will be on Sunday June 5<sup>th</sup> at 5:00 pm. The practice green will be set up as a mini golf course and the driving range will feature a large inflatable gorilla. Food, games and other activities will also be available. Cost is free!

Billboard location:

- On the Kennedy expressway in Bucktown.
- Billboard is expected to be displayed beginning late May/early June.

# GO PLAY MORE GOLF

**GOLFNOW**  
Tee Times 24/7



## **Recreation Department Monthly Report** **Brian Taylor • May 2016**

---

### **Aquatics**

**Summer Swim Team** - The Shark Swim Team is staffed and ready to go for the summer. A big change for the summer season is that all practices will take place in the morning at Meadows Family Aquatic Center. **Aqua Fitness** – The success of the Aqua Light class has prompted staff to offer an early morning Aqua Fitness class this summer. The summer sampler will be returning to Meadows Pool. Ten Aqua Fitness classes will be offered outdoors at a pay as you go rate.

**Learn to Swim** - The new formatting for Summer swim lessons has received very positive feedback, lessons are up over 30% from last spring. Families now find it easier to bring all of their children to swim lessons on the same day and time block. Wrist bands, which correspond with the level the child will participate during summer lessons, will be handed out the last two weeks of the spring lessons. **Staff training** dates have been set, we are hiring, scheduling, training, ordering, and cleaning. First full week in May and Big Surf is holding water and coming to life! Long Live Big Surf! Since September we have hired 49 new staff members bringing us to 167 total employees. We offered 3 lifeguard certification classes and from those classes, recruited a total of 30 lifeguards. Camp dates at the pool are set and organized. VOMP-MPPD Pool Pass Scholarship was done onsite at RecPlex. 14 families took advantage of the onsite location.

### **Athletics**

**Adult Softball Classic League** - The field of teams is set with 17 teams in the league. This is 1 less team than last season. Opening night was Tuesday, May 3rd. **Adult Softball House Leagues** - All leagues are set and we have filled all of our leagues. We have twelve Co-Ed Rec teams this season compared to eleven last year and forty-two 16" Men's teams compared to thirty-five last year. The season began on May 9<sup>th</sup> and the total of our House league teams this year is 54, compared to 46 teams in 2015. **Adult Basketball Leagues** - Our Spring adult basketball league has grown to 14 teams. We are taking registration for the summer leagues with some beginning in Mid-May and the rest in June. **Spring Boys and Girls Outdoor Soccer** – Since the start of our season we have only been able to play 2 of the 4 scheduled weekends. Mother Nature has not cooperated. We continue to reschedule games to accommodate each team. Rescheduled games have taken place during the week and even on a Saturday in May. **Tot Athletic Classes** - Our spring sessions show a total of 219 registered tots in our athletic classes, putting us up 25 from last year. This success is accredited to the implementation of new programming, along with the success of established programs like Youth Track, Field, & Fitness and Little Kickers. We decided to bring some fitness to the table within the athletic realm, providing youth with fun and exciting ways to stay fit. The numbers for the class reflect a positive acceptance of this type of programming for our community. **Green White Soccer First Kick Pre-Academy** - Taking place of our always popular Goal! United Soccer program, our friends at Green White Soccer Club have stepped in to train our toddlers and youth at the RecPlex on Saturday mornings. So far, the feedback has been phenomenal! Our first spring sessions nearly maxed out with 47 total participants! **Gymnastics** – Spring of 2016 brought in 169 gymnasts, a healthy increase of 26 kids from 2015. **Hot Shots Sports** – 77 total participants gave us an increase of 8 kids from 2015. **Youth Inline Hockey** - For the first time in years, MPPD Inline was successful in running a spring season with 97 players participating in four divisions. **Summer Camp** - Registration is open and campers are signing up. Numbers will continue to increase throughout May and into early June. **ICE Program Development** - Ice is



## **Recreation Department Monthly Report**

### **Brian Taylor • May 2016**

---

coming. Work on our Ice program is moving along well. We are meeting with as many organizations as possible including USA Hockey to ensure the success of this program. Information for registration will be in our Fall Brochure and other materials will be made available to the public as quick as it can be produced. We will be able to offer all programs we anticipated; Learn to Skate classes from Tot to Adults; including basic figure skating, Intro to Hockey classes; Adult skating and hockey classes, Youth hockey house leagues and Adult hockey leagues.

### **Programming & Special Events**

**Early Childhood and Youth Department** - The Friendship Park Conservatory welcomed the Pre K, Jr. Kindergarten and KinderKlub classes to their facility on April 22, 28 & 29. The conservatory entertained 135 students, who had the pleasure of planting, touring the greenhouse /atrium as well learning all about plants and flowers. These outings for our preschoolers always have the parents saying, "I did not know this building was here" or "This is a park district facility, how beautiful" as well as other positive comments. Thank you to the staff at the conservatory for providing a wonderful outing. **Preschool** is wrapping up their 2015-2016 school year. Registrations continue to come in on a regular basis for the 2016-17 school year as we are up 12% in enrollment from last month. **KinderKlub** most likely will be expanding. The principal, Mary Gorr, from Westbrook School reached out to us to see if we could offer a program in the morning for the afternoon Kindergartners. **Summer Camp** registration has reached the 65-70% capacity mark, as we head into the month of May. We plan to be completely full before the May 27th registration deadline. Last month the process of interviews began for the nearly 25 open positions for this summer's programs. At the beginning of April we also introduced Applitrack as our new application / job posting system. This program has helped to view, contact, and track potential employees all in one place. There has been a great influx of applicants, as this process puts our available jobs right at their fingertips. The hiring process will continue and will be completed before the Summer Kick Off Meeting! **Lil Mountaineer Preschool** is also looking great with 6 of our 12 classes with 100% enrollment, and 5 of our classes are over halfway full for 2016-2017 school year. We began last year with our new Trekkers Program (extended preschool at RecPlex) and are expecting it to continue.

**Visual Arts – The Art Studio** - We hosted an Art Night at Brentwood School for the PTO as a fundraiser. We bring the plaster and wood product, paint, glitter, brushes, and the families attend for a fun night of painting. It was a great success! We are continuing an extremely strong Birthday party showing with 12 Art Studio Birthday parties and 170+ attendees. These are held on the weekends between all our other classes and activities! The Art Studio also hosted the Kinder Klub class for a field trip to do two art projects, a cherry tree and paper roller coaster.

**Performing Arts – Dance, Theatre, Guitar** - The Ballet *The Legend of Mulan* was performed May 6<sup>th</sup> and 7<sup>th</sup>. The dancers, instructors, and all involved had worked hard on making this a unique and professional quality performance! The two evening shows were sold out, over 400 seats, before the performance weekend! We always hold back a very limited amount of tickets to allow for door sales. Online ticketing for recitals was implemented and was a huge success! **Mt. Prospect Community Band - Strike Up the Band** - The band is 34 members strong with more joining every week! They are welcoming new members and even some returning members. The summer concert plans are nearly firmed up for our 40<sup>th</sup> anniversary season! We ordered shirts for the band members with the new band logo to wear at the summer concerts. Plans to perform for

## **Recreation Department Monthly Report** **Brian Taylor • May 2016**

---

Memorial Day are made and discussions have been held between Monty Adams and Bill Starr. **Special Events** -The Art Studio ran the craft at the Fiesta Flip Flop Fest at CCC. We had wood Maracas for children to decorate with gems and other materials.

### **Facilities**

**Special Events at FPC** -113 excited gardeners lined the sidewalk and waited patiently for our doors to open. Our plant sale continues to increase in popularity and everyone was anxious to see what delightful plants awaited them in the greenhouse this year. Totals included approximately 550 shoppers, 4613 plants sold, for a total of \$15,736 in sales. Our employee/volunteer After-Sale, is still in progress, but has resulted in an additional \$1,500 to date.



**Earth Day...Earth Day...Arbor Day.** We presented several new topics this year including lawn care, bug control in outdoor gardens, and decorative paper flowers made using pages from used church hymnals. The Conservatory was also invited by Robert Bosch Tools to participate in their Earth Day event. We accepted and took our show on the road. We planted hundreds of succulents with their employees during this lunch time event.



**Programming & Rentals** - Our Grow Like a Pro class is now over. Participants enjoyed growing plants, using our greenhouse, as their own, for a short time. They went home with all the herbs and veggies that they started from seed, as well as, plants grown from cuttings and plugs. It was an interesting class, using a very different approach and setting. Cooking with Dave

## **Recreation Department Monthly Report**

### **Brian Taylor • May 2016**

---

focused on Old-fashioned Favorites, which included bread pudding, Grandma's spaghetti sauce and rice pudding. The banquet room was continuously being set up for various rentals this month, with 1 wedding reception, 2 bridal showers, a memorial service, a 1<sup>st</sup> birthday and even a little girls' tea party. Three garden groups had their meetings with us and we had 1 corporate daytime meeting on the calendar. **Greenhouse Activities** - The greenhouse is packed with colors and blooms of all sizes, shapes and colors. Flowerbeds are planned and our maintenance crew will be seen planting throughout the district. More than 500 school children have enjoyed a greenhouse tour with our staff. It's a nice way to introduce children to the world of horticulture and tie it into their classroom curriculum. A \$3 per child fee is charged for tours. **Canine Commons Dog Park** - The maintenance of the dog park has been turned over to the Arlington Heights Park District, for the next year.

## **Community Relations & Marketing Monthly Report**

### **Ruth Yueill • May 2016**

---

### **Community**

Community Relations & Marketing accompanied Executive Director, Greg Kuhs, to Springfield on May 2 and 3 for IAPD's "Parks Day at the Capital." The Capital event featured displays representing 40 Illinois park districts and offered a great opportunity to network with other park district personnel and elected representatives. Both Senator Matt Murphy and Representative David Harris stopped by for a visit.

Our team prepared a colorful display centered on our 2016 theme of "Piecing Together an Active Life." The MPTV award-winning video of "Inside the Park" also played as part of the presentation. Community Relations & Marketing took home dozens of program guides, new contacts and great ideas. We look forward to "mingling" with our contemporaries again in 2017.



Our community involvement in May includes key roles in upcoming events including the Memorial Day Program, Grand Opening of River Trails Maple Trails Park, continued preparation for the National Night Out with the Mount Prospect Police Department and within our "community" the planning of a newly structured Summer Employee Staff Meeting.

## **Community Relations & Marketing Monthly Report**

### **Ruth Yueill • May 2016**

---

Our special “Inside the Park” program that celebrated the employees and the park’s 60<sup>th</sup> Anniversary will welcome staff to the summer meeting. CR & M suggested using the video to to create a “pep –rally” type atmosphere.

Mark your calendars for Saturday, June 11 at 10 am for the grand reopening of the play lot at Einstein Park in Des Plaines. Fun activities for kids of all ages! (See attached invitation)

### **Sponsorship**

The good news continues as CR&M has several new additions to our family of sponsors. McDonalds, owned and operated by the Bear family, has requested involvement in two major park district events in 2016. They will be onsite for National Night Out on August 2<sup>nd</sup> with a bounce house and characters including the HamBurglar and onsite for our Halloween Event on Saturday, October 1<sup>st</sup>. Ronald McDonald will perform his magic show and Mr. Bear will donate all the hamburgers and cheeseburgers needed to feed our hardworking staff at the Halloween Event. He is also donating 200 bags of apple slices for our Strive for 5K on Saturday, June 18<sup>th</sup>. Thank you McDonald’s – we’re LOVIN’ IT!

Kernel Seasons, an Elk Grove based national popcorn seasoning company, has donated popcorn bars and samples at our summer movie nights on June 23 and July 28, as well as season packets for the Strive for 5k race bags. Kernel Seasons will give away popcorn with assorted toppings at our Camp Night at the bandshell on Thursday, July 14 and will coupon and sample popcorn at the Monday Night Concert Series on July 11<sup>th</sup> at the concert entitled “Prospect Pops Parade.”

Talks continue with the Randhurst mall marketing representative. We have joined their project asking eleven community partners to paint a fire hydrant at the mall this summer. The Centennial Commission planned the hydrant painting as a fundraiser. CR & M is “eyeing” several hydrants on park property for additional decorating, but we are pleased and proud to join Randhurst in their interpretation of this civic event. As a result, we are in talks for a “Randhurst Night” at the Bandshell during a Monday night concert. We have commitments from Outback and Black Finn and are working to bring another restaurant or two into the mix. They will sample tasty delights and delicious desserts.

Advanced Physical Therapy & Medicine of Mount Prospect has just signed a sponsorship contract with us for the coming year. They will work with our fitness department in presenting wellness and injury lectures for our patrons and be a significant presence at all fitness events including the Strive for 5, Member Appreciation Days and January Dance Parties.

Despite news reports, the Mt. Prospect Sports Authority continues to operate. Our relationship with them will remain business as usual with gift card, monetary and other in-kind donations.

### **Marketing/Publications**

Summer brochure is out and positive comments are coming in. We continue to work on our redesign maximizing visual content and minimizing directives. The ultimate goal is a satisfying blend of content reflecting people at play rather than extended copy directing people at play. Fall brochure is available to patrons the week of August 8.



## **Community Relations & Marketing Monthly Report**

### **Ruth Yueill • May 2016**

---

CR & M has designed a marketing plan for the new ice programming. We have met with Nicholas & Associates and will be sharing ideas as we proceed. Many summer events will have an “ice” connection. Stay tuned for the chilly details....

CR & M wrote several articles for the Daily Herald Summer Fun Guide for Mount Prospect. A copy is included in your board report. Daily Herald Editor, James Kane, offered a full feature article of our choice with multiple photos in exchange for the summer guide content. Please enjoy articles on page 14, 15 and 16.

Events and programs were featured in several newspaper articles in the month of May. The Conservatory plant sale had an article and photo in the Daily Herald and the board meeting photo of Greg Kuhs, Brian Taylor and Nick Papanicholas was featured in the Journal and Times.

### **Social/Digital Media**

Engaging posts this month included drone videos of the ice arena, dance recital photos, a Studio visit by the LIFE program from District 2014 and a link to our monthly newsletter.

We uploaded our current “Inside the Park” summer preview show to our YouTube Channel. Our success with Mount Prospect Television is expanding to Des Plaines. We filmed a segment on the Friendship Park Conservatory for the “Des Plaines @ Your Service” program. This month’s show features fun things to do around Des Plaines in the summer. The show is part of the city of Des Plaines Media Services Department. We look forward to future stories with the previously untapped media outlet.

Our May e-newsletter via Constant Contact had a 31 percent open rate. The newsletter was a summer preview highlighting pool pass sales, race registration, family golf night and the Monday Night Concert Series.

Sharing Facebook posts with our partners! We photographed the students in the District 214 LIFE Program while they visited the studio and posted pictures of their happy faces and terrific works of art! In return, District 214 shared the post with a comment. This is a great example of partnering and maintaining relationships through social media.



## **Community Relations & Marketing Monthly Report**

### **Ruth Yueill • May 2016**

---

#### **Graphic Design Report**

##### **Posters/Flyers:**

- Ballet Recital Promo – Mulan (poster)
- Jazz Recital Promo – Dreams (poster)
- Superhero Dash N’ Splash (poster, plus 22” x 34” posters from Signarama)
- Fitness Membership Fee (black/white flyer, converted from summer brochure)

##### **Website:**

- Web Promotions:
  - Dance Recitals
  - Superhero Dash N’ Splash
  - Flip Flop Fiesta
  - Family Golf Night
  - Fly a Kite Family Event
  - North Pole Beach Party
- Other Web maintenance/updates/uploads:
  - Weekly Open Gym Schedules for RecPlex posted
  - Summer 2016 brochure cover art, PDF & interactive brochures posted/uploaded
  - Updated pool webpages to reflect summer hours and fees
  - Updated Preschool Parent Handbook

##### **Other Design Projects:**

- Studio Impulse “What Dreams Are Made Of” Program Cover
- Studio Impulse “What Dreams Are Made Of” Ticket Website Masthead
- New Camp Logos: Explore Galore Camp, Camp Sundance, Camp Counselor
- Daily Herald Special Section Ad – Mt. Prospect Golf Club
- Summer Group Fitness Passport, Spin & Combo Punch Cards
- Annual Fiscal Report Cover
- Updating Volleyball & Basketball Open Gym Rule Signs
- Springfield Parks & Rec Day Display Boards (2) & Die Cut Puzzle Piece Signs (5)
- Redesign and update of Playtime Express informational flyer (fees, policies)
- Daily Herald Resident Guide Ad (full color, quarter page)
- Sharks Swim Team Summer Practice Schedule (2 up)

## **Administration & Human Resources Monthly Report**

### **Barry Kurcz • May 2016**

---

#### **Applicant Tracking System**

Since AppliTrack was successfully launched on April 1<sup>st</sup>, we have hired 40 new employees (mostly summer help) using our new process and system. We have received nothing but positive feedback.

#### **Annual Performance Appraisals for Full-Time/Part-Time IMRF Personnel**

Directors are in the process of reviewing appraisals and forwarding recommended merit increases to Administration. All information is to be reviewed to ensure quality, consistency and to ensure increases are within budget. Once approved, supervisors may begin conducting sit down performance reviews with their employees. These appraisal forms must be signed by each employee and their supervisor, and placed in the employee's personnel file. Change in pay is scheduled to appear on the June 17th paycheck.

#### **New Overtime Rule Issued by US Department of Labor**

The Department of Labor issued a final overtime rule on May 18<sup>th</sup> which includes an exempt employee threshold of \$47,476, slightly more than double the old threshold of \$23,660. The impact of the increase will escalate in coming years as the rule indicated a hike every three years in the minimum salary for exempt employees. The automatic increase will be based on the 40<sup>th</sup> percentile of the weekly earnings of full time salaried workers in the South region, the lowest wage census region. Employers must comply with the new rule by December 1, 2016.

Mount Prospect Park District currently has 7 exempt employees under the threshold of \$47,476. Staff will be participating in webinars offered through Franczek, Radelet and IAPD over the next several weeks to learn more about the new rule and potential implementation strategies.

#### **Phone Hub**

All outside calls for Friendship Park Conservatory, Lions Recreation Center, RecPlex and Central Community Center are now answered at one primary hub during the week. This transition successfully took place on May 11<sup>th</sup>. CCC is the hub on weekday mornings and RecPlex is the hub in the afternoon. Front desk personnel and receptionist have received training by the implementation team. New procedures and protocols are now in place and we will continue to assess and refine these as necessary.

#### **Staff Changes**

Brian Hecker was promoted to FT CCC Coordinator on May 16<sup>th</sup>  
Mike Kaiser, FT Golf Course Mechanic's last day was April 26<sup>th</sup>  
Marilyn Adamski, PT IMRF Receptionist retired April 28<sup>th</sup>



**MT PROSPECT PARK DISTRICT  
DEPARTMENTAL EXPENDITURE ANALYSIS  
FOR THE 4 MONTHS ENDED 4-30-16**

33% OF CALENDAR YEAR

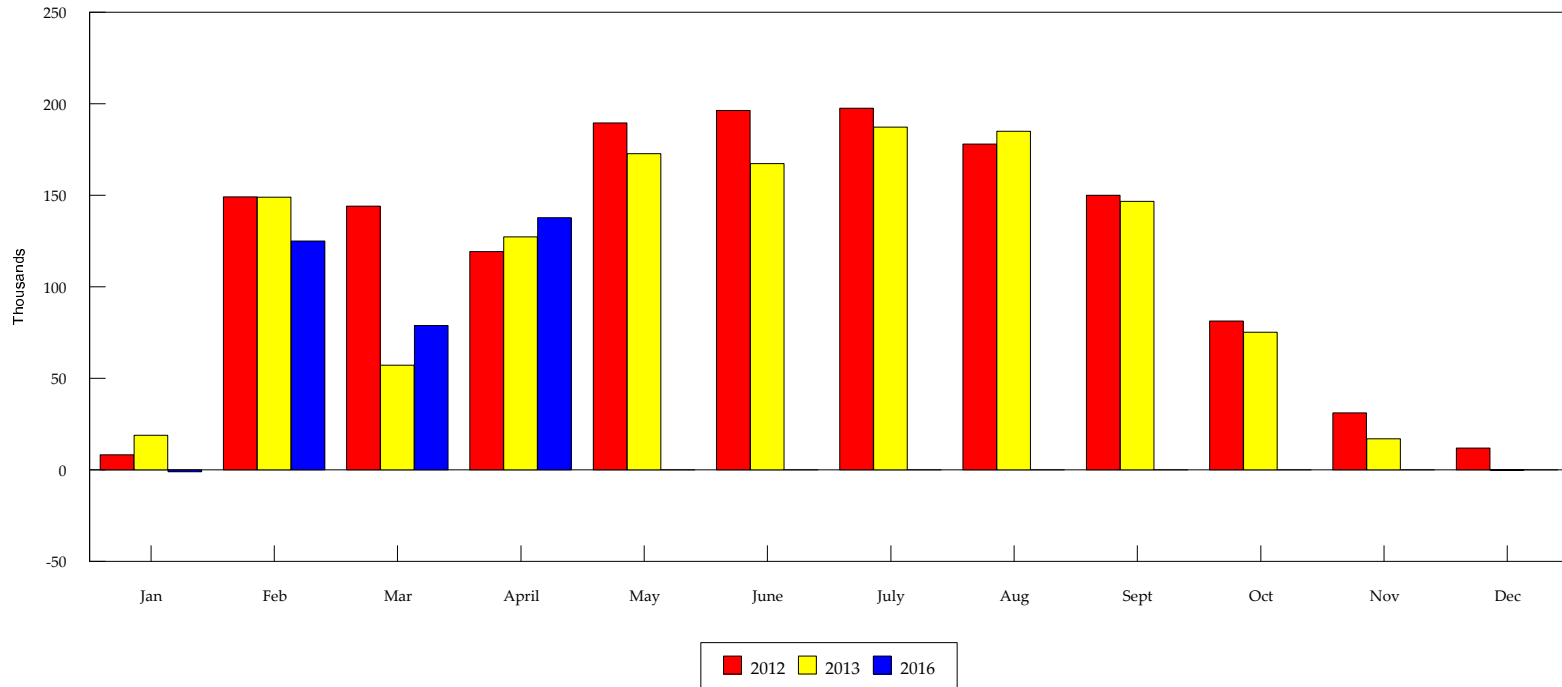
FUND / Department	'16 Y.T.D. Actual	2016 Budget	Y.T.D. as % of '16 Budget	'15 Y.T.D. Actual	Y.T.D. % of '15 Y.T.D.	Projected 2016	Proj % of '16 Bud	% Inc '16 Bud Over '15 Bud
<b>GENERAL FUND</b>								
Administration	334,562	957,640	35%	335,468	100%	947,749	99%	0%
Maintenance	272,163	795,584	34%	329,806	83%	789,128	99%	-16%
Motor Pool	64,297	296,435	22%	60,021	107%	228,120	77%	3%
Buildings	54,775	185,071	30%	-				
Studio at Melas	6,934	21,261	33%	6,463	107%	16,887	79%	-3%
Total	<u>732,732</u>	<u>2,255,991</u>	<u>32%</u>	<u>731,758</u>	<u>100%</u>	<u>2,156,845</u>	<u>96%</u>	<u>2%</u>
<b>RECREATION FUND</b>								
Administration	303,070	1,058,247	29%	254,604	119%	965,833	91%	33%
Big Surf	67,854	312,183	22%	53,648	126%	301,532	97%	10%
Meadows Pool	15,558	194,864	8%	12,364	126%	192,113	99%	4%
Recplex Pool	177,161	540,840	33%	130,678	136%	536,974	99%	13%
Golf Course	449,259	1,559,967	29%	343,305	131%	1,610,215	103%	15%
Concessions	13,556	160,614	8%	14,274	95%	122,517	76%	6%
Lions Center	66,460	185,231	36%	60,921	109%	194,083	105%	-3%
Recplex Center	320,289	1,015,519	32%	294,400	109%	1,014,058	100%	-2%
Rec Programs	518,076	1,582,483	33%	383,998	135%	1,796,584	114%	-3%
Central Programs	28,633	137,400	21%	13,980	205%	131,582	96%	-3%
Central Road	203,026	605,170	34%	206,707	98%	579,176	96%	-5%
Total	<u>2,162,942</u>	<u>7,352,518</u>	<u>29%</u>	<u>1,768,876</u>	<u>122%</u>	<u>7,467,327</u>	<u>102%</u>	<u>7%</u>

## MT PROSPECT PARK DISTRICT GOLF COURSE MONTHLY RECEIPTS

Comparison to Previous Years of Full Operation

**Revenue Recap by yr:**

2012		2013		2016		'12Budget	'13Budget	'16Budget
Month	YTD	Month	YTD	Month	YTD			
Jan	8,372	Jan	19,025	Jan	(916)	1,489,500		
Feb	149,262	Feb	149,040	Feb	125,058	1,458,500		
Mar	144,176	Mar	57,199	Mar	78,883	203,025		
April	119,383	April	127,391	April	137,927	340,952		
May	189,666	May	172,891	May	0	0		
June	196,468	June	167,420	June	0	0		
July	197,577	July	187,317	July	0	0		
Aug	178,099	Aug	185,017	Aug	0	0		
Sept	150,044	Sept	146,745	Sept	0	0		
Oct	81,408	Oct	75,315	Oct	0	0		
Nov	31,123	Nov	16,993	Nov	0	0		
Dec	12,038	Dec	(124)	Dec	0	0		
			1,304,229					

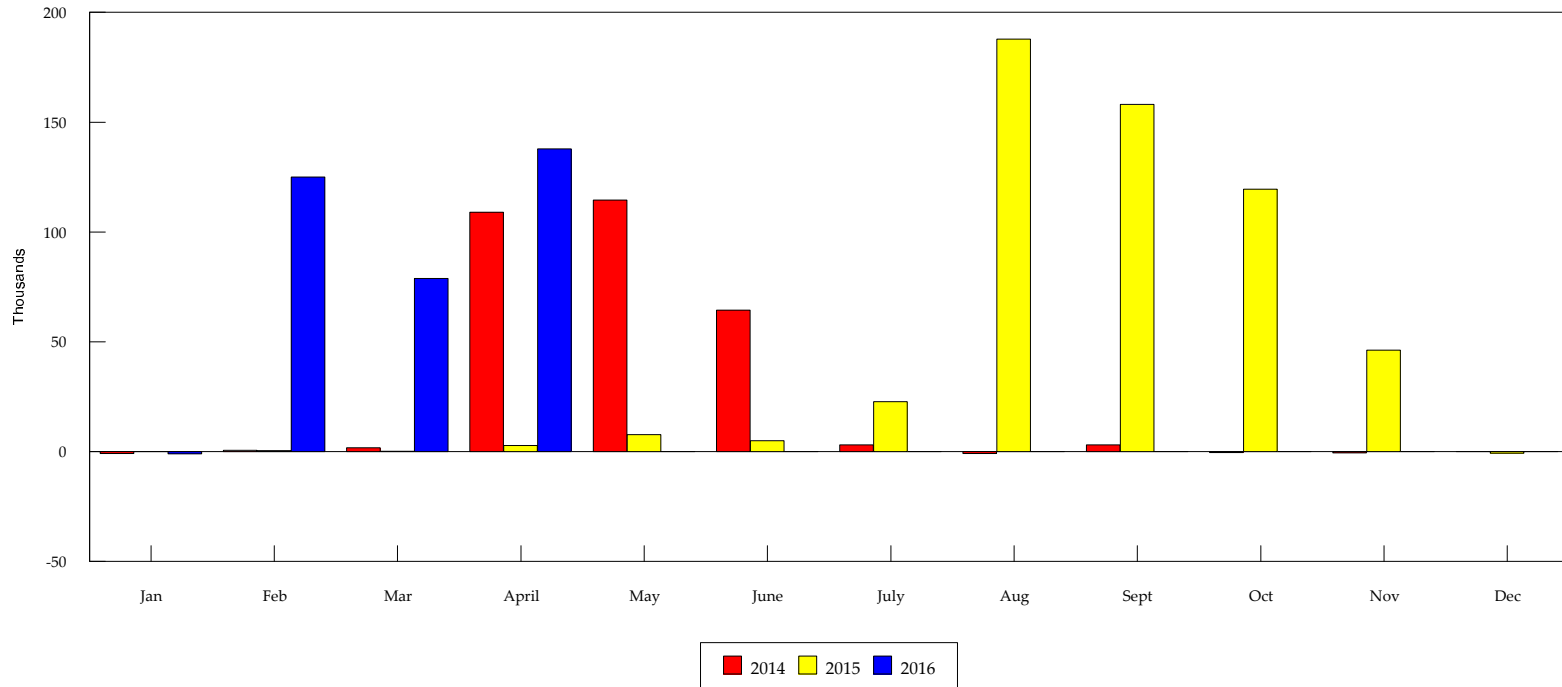


This Year Vs Last Two Years

## MT PROSPECT PARK DISTRICT GOLF COURSE MONTHLY RECEIPTS

**Revenue Recap by yr:**

2014			2015			2016			'13Budget	
Month	YTD		Month	YTD		Month	YTD			
Jan	(779)	(779)	Jan	35	35	Jan	(916)	(916)	'13Budget	1,458,500
Feb	598	(181)	Feb	417	452	Feb	125,058	124,142	'14Budget	726,600
Mar	1,857	1,676	Mar	209	661	Mar	78,883	203,025	'15Budget	705,490
April	109,004	110,680	April	2,869	3,530	April	137,927	340,952	'16Budget	1,602,000
May	114,621	225,301	May	7,758	11,288	May	0	0		
June	64,491	289,793	June	4,986	16,274	June	0	0		
July	3,153	292,946	July	22,714	38,988	July	0	0		
Aug	(759)	292,187	Aug	187,774	226,762	Aug	0	0		
Sept	3,159	295,346	Sept	158,081	384,843	Sept	0	0		
Oct	(360)	294,986	Oct	119,569	504,412	Oct	0	0		
Nov	(560)	294,426	Nov	46,280	550,692	Nov	0	0		
Dec	0	0	Dec	(721)	549,970	Dec	0	0		



This Year Vs Last Two Years

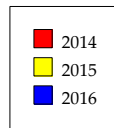
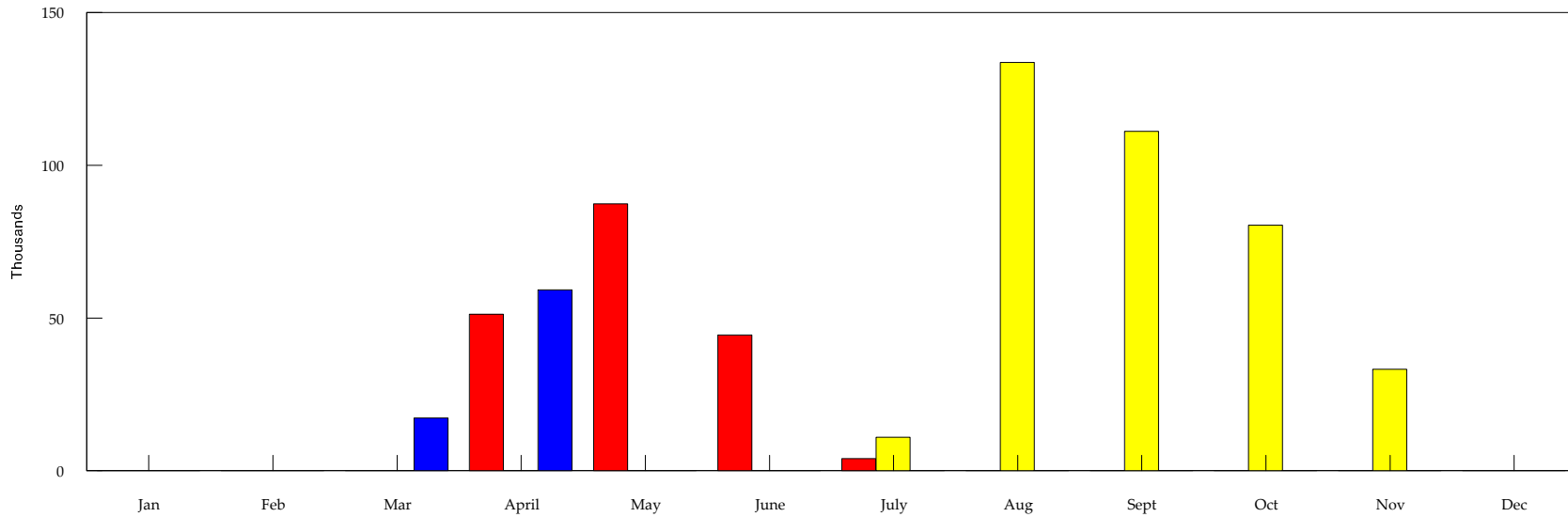
**MOUNT PROSPECT PARK DISTRICT**  
**GOLF COURSE Department by Function**  
**For Four Months Ended 4-30-16**

ACCOUNT NAMES	TOTALS	ADMIN/ PRO SHOP	MAINT.	MERCH SALES	DRIVING RANGE	LESSONS	EVENTS	GOLF COMMUNITY CENTER
<b>REVENUES:</b>								
RENTAL	25,084	25,084						
PASSES /USER FEES	198,118	198,118						
DAILY /USER FEES	101,575	92,501			9,074			
PROGRAM FEES	15,238	2,135				13,103		
MERCHANDISE SALES	6,152			6,152				
OTHER	(5,215)	(5,215)						
SPONSORSHIPS	2					2		
TOTAL REVENUE	340,952	312,623	-	6,152	9,074	13,105	-	-
% of Budget	21%	22%	n/a	11%	10%	28%	0%	
<b>EXPENDITURES:</b>								
FULL TIME SALARIES	193,239	106,314	70,239					16,685
PART TIME SALARIES	44,040	13,621	26,935					3,484
FRINGE BENEFITS	84,958	30,274	44,437					10,247
CONTRACTUAL SERVICES	25,177	13,740	2,776					8,661
COMMODITIES	63,805	8,028	50,372	95	250	125	500	4,436
MERCHANDISE	12,010			12,010				
UTILITIES	25,875	8,592	9,337					7,946
SALES TAX	156			156				
TOTAL EXPENDITURES	449,259	180,568	204,097	12,261	250	125	500	51,458
% of Budget	29%	30%	29%	22%	4%	0%	3%	34%
REVENUE OVER(UNDER) EXP	(108,307)	132,055	(204,097)	(6,110)	8,824	12,980	(500)	(51,458)
<b>CHANGE FROM LAST YR + (-)</b>								
REVENUE	337,422	312,028	-	4,527	9,074	11,795	-	-
EXPENDITURES	105,954	10,086	72,588	11,654	-	(73)	-	11,699
NET	231,468	301,942	(72,588)	(7,128)	9,074	11,868	-	(11,699)
<b>% CHANGE FROM LAST YEAR</b>								
REVENUE	9,559	n/a	n/a	279		900	n/a	n/a
EXPENDITURES	31	6	55	1,920	-	(37)	-	29

**MT PROSPECT PARK DISTRICT**  
**GOLF COURSE**  
**Greens Fees Sales**

**Revenue Recap by yr:**

	2014		2015		2016			
	Month	YTD	Month	YTD	Month	YTD		
Jan	0	0	Jan	0	Jan	0	'14Budget	340,000
Feb	0	0	Feb	0	Feb	0	'15Budget	400,000
Mar	0	0	Mar	0	Mar	17,263	'16Budget	850,000
April	51,226	51,226	April	0	April	59,254		
May	87,458	138,684	May	0	May	0		
June	44,471	183,155	June	0	June	0		
July	4,000	187,155	July	10,971	July	0		
Aug	0	0	Aug	133,659	Aug	0		
Sept	0	0	Sept	111,129	Sept	0		
Oct	0	0	Oct	80,451	Oct	0		
Nov	0	0	Nov	33,259	Nov	0		
Dec	0	0	Dec	0	Dec	0		

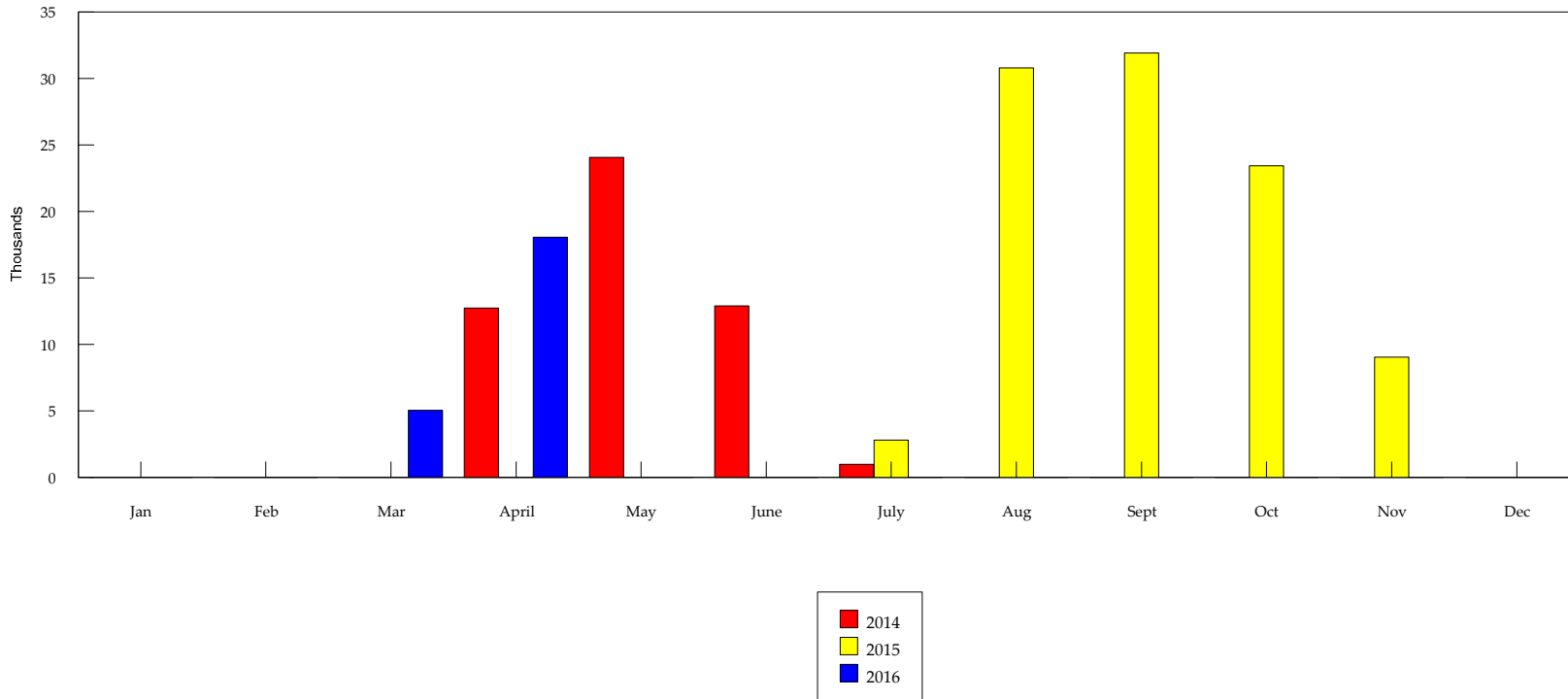


This Year Vs Last Two Years

MT PROSPECT PARK DISTRICT  
GOLF COURSE  
**Power Cart Rental**

**Revenue Recap by yr:**

	2014		2015		2016		'14Budget	'15Budget	'16Budget
	Month	YTD	Month	YTD	Month	YTD			
Jan	0	0	Jan	0	Jan	0	110,000		
Feb	0	0	Feb	0	Feb	0	150,000		
Mar	0	0	Mar	0	Mar	5,052	280,000		
April	12,738	12,738	April	0	April	18,073			
May	24,086	36,824	May	0	May	0			
June	12,898	49,722	June	0	June	0			
July	1,000	50,722	July	2,822	July	0			
Aug	0	0	Aug	30,811	Aug	0			
Sept	0	0	Sept	31,939	Sept	0			
Oct	0	0	Oct	23,443	Oct	0			
Nov	0	0	Nov	9,057	Nov	0			
Dec	0	50,722	Dec	0	Dec	0			
				98,072		23,125			

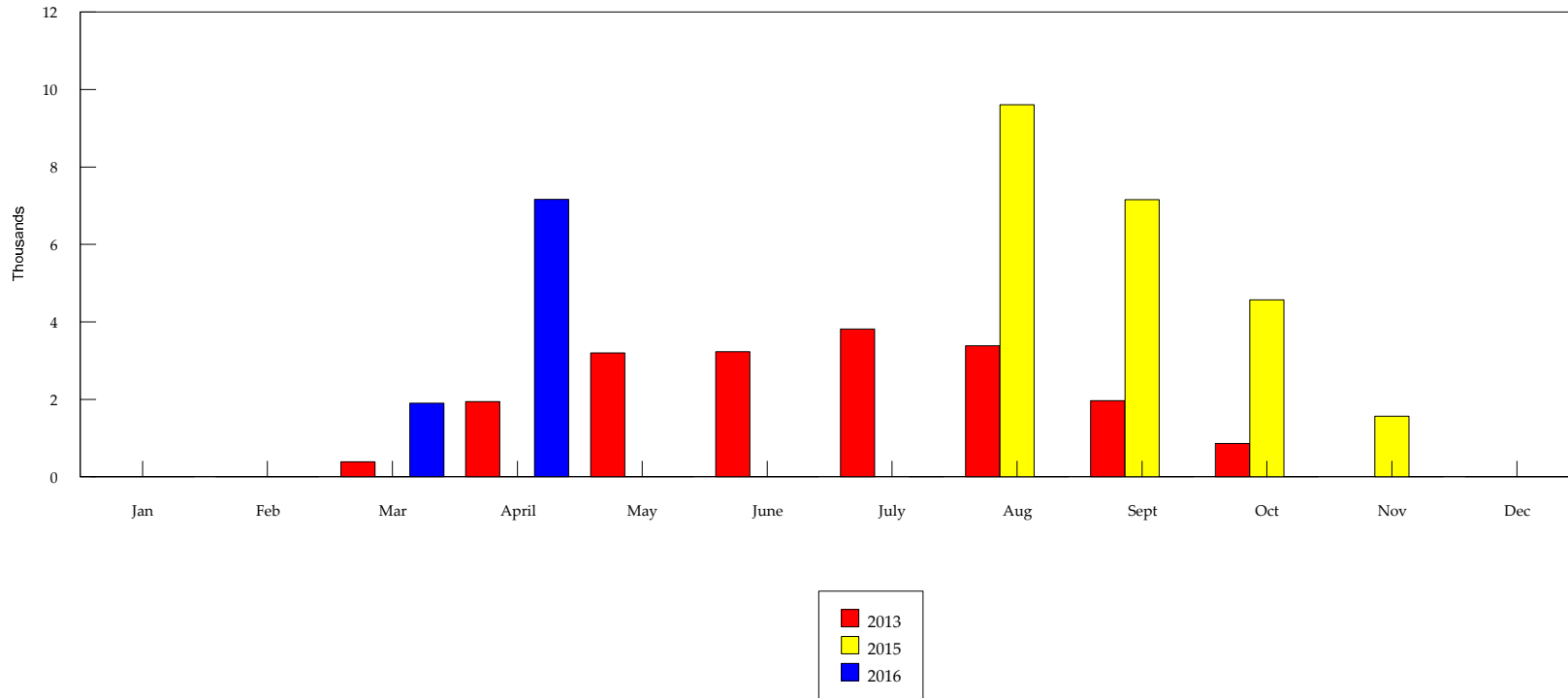


This Year Vs Last Two Years

MT PROSPECT PARK DISTRICT  
GOLF COURSE  
Driving Range Revenue

Revenue Recap by yr:

	2013		2015		2016		'13Budget	'15Budget	'16Budget
	Month	YTD	Month	YTD	Month	YTD			
Jan	0	0	Jan	0	Jan	0	21,000		
Feb	0	0	Feb	0	Feb	0	40,000		
Mar	390	390	Mar	0	Mar	1,906	90,000		
April	1,940	2,330	April	0	April	7,167			
May	3,200	5,530	May	0	May	0			
June	3,235	8,765	June	0	June	0			
July	3,820	12,585	July	0	July	0			
Aug	3,387	15,972	Aug	9,610	Aug	0			
Sept	1,970	17,942	Sept	7,155	Sept	0			
Oct	858	18,800	Oct	4,571	Oct	0			
Nov	0	0	Nov	1,563	Nov	0			
Dec	0	18,800	Dec	0	Dec	0			
				22,899		9,074			

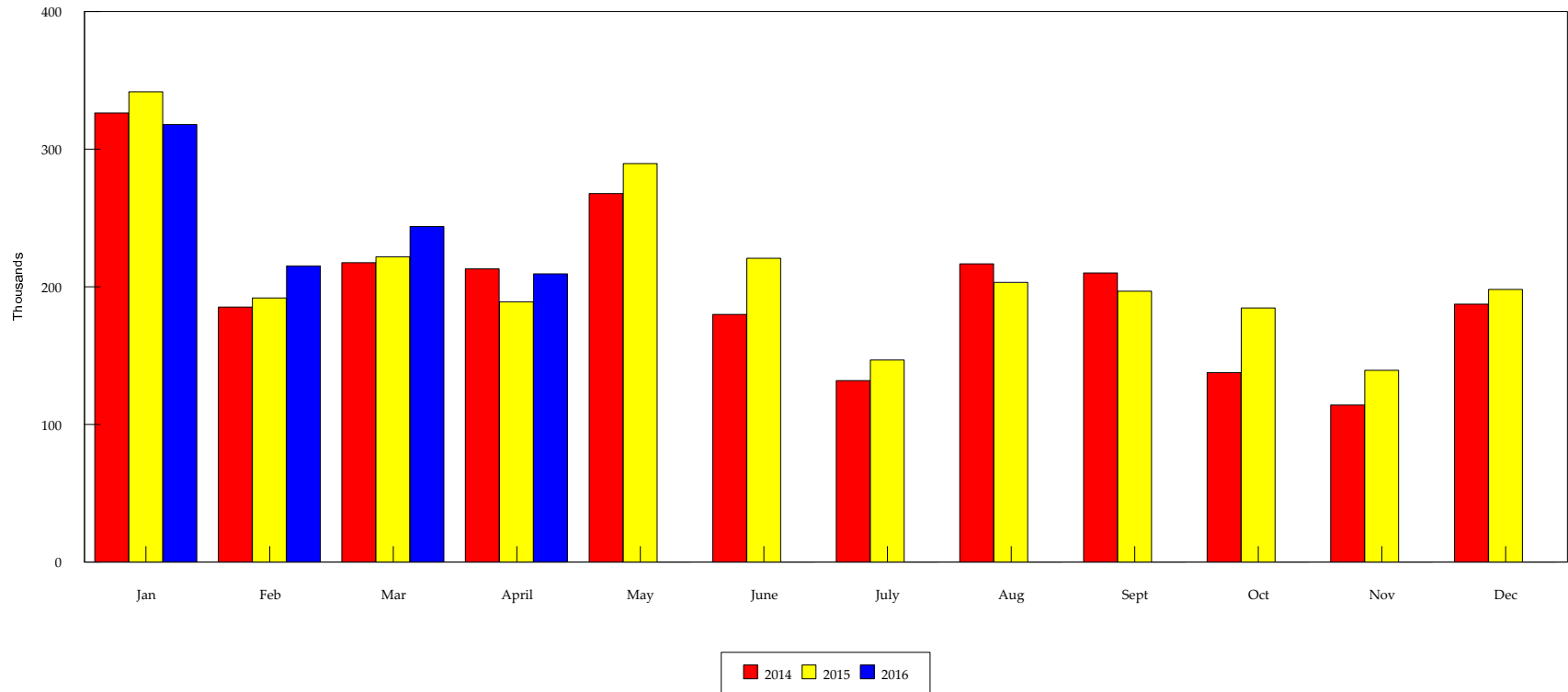


This Year Vs Last Two Years

## MT PROSPECT PARK DISTRICT PROGRAM REVENUE

**Revenue Recap by yr:**

	2014		2015		2016		'14Budget	'15Budget	'16Budget
	Month	YTD	Month	YTD	Month	YTD			
Jan	326,391	326,391	Jan	341,755	Jan	318,088	2,375,050		
Feb	185,370	511,760	Feb	191,951	Feb	215,326	2,434,300		
Mar	217,723	729,483	Mar	221,835	Mar	243,880	2,459,100		
April	213,232	942,716	April	189,238	April	209,424			
May	267,943	1,210,659	May	289,573	May	0			
June	180,044	1,390,703	June	220,798	June	0			
July	131,877	1,522,580	July	146,894	July	0			
Aug	216,713	1,739,293	Aug	203,403	Aug	0			
Sept	210,238	1,949,530	Sept	196,803	Sept	0			
Oct	137,662	2,087,192	Oct	184,688	Oct	0			
Nov	114,213	2,201,405	Nov	139,489	Nov	0			
Dec	187,591	2,388,996	Dec	198,126	Dec	0			



This Year Vs Last Year



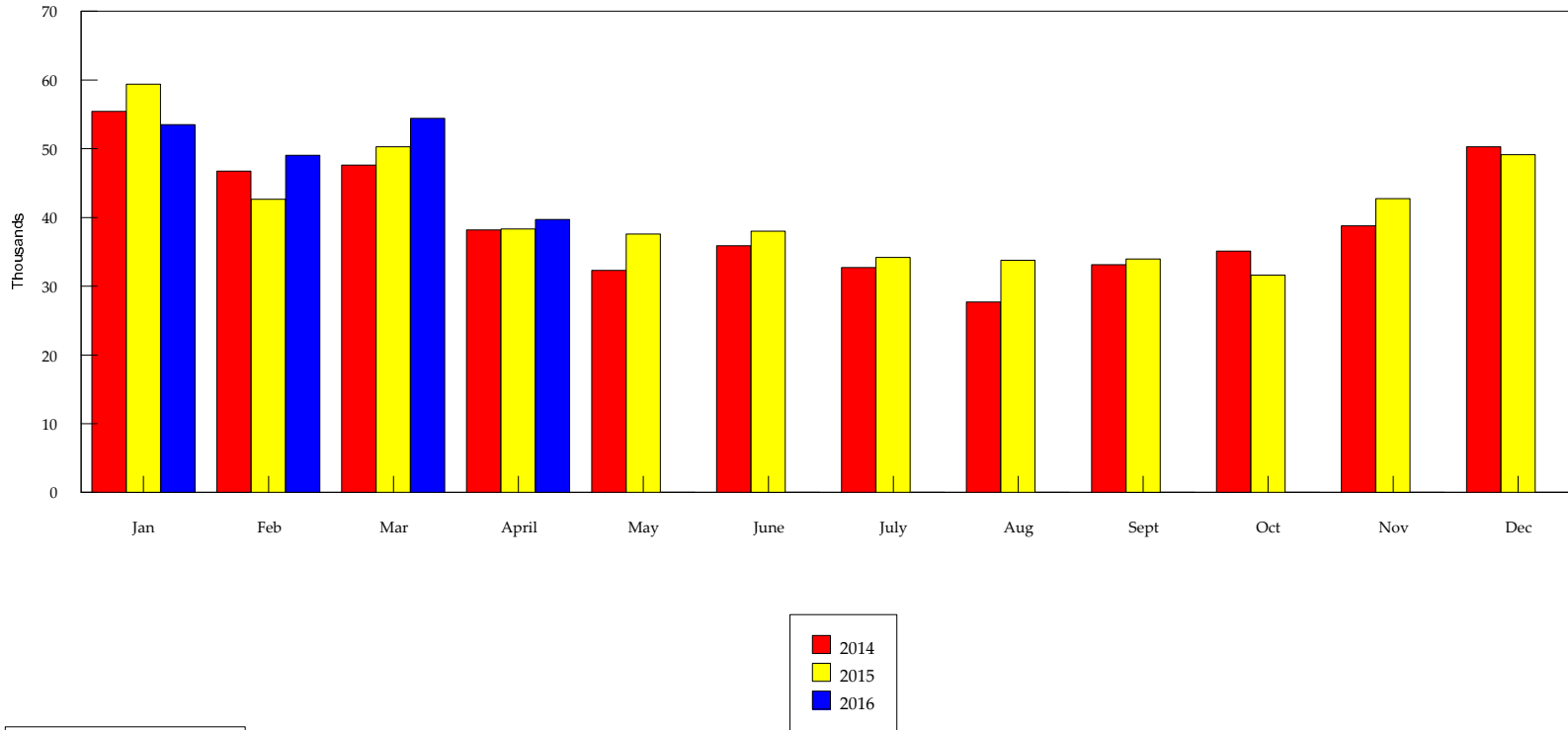
MOUNT PROSPECT PARK DISTRICT  
PROGRAMS Department by Function  
For Four Months Ended 4-30-16

ACCOUNT NAMES	TOTALS	YOUTH/ CHILD CARE	ATHLETICS ADULT	YOUTH	FITNESS	SPECIAL EVENTS	ARTS	SENIOR CLUB	BASEBALL
<b>REVENUES:</b>									
PROGRAM FEES	977,407	466,209	47,632	114,169	72,795	5,331	122,575	135	139,785
CHILD CARE	8,711	8,711	-						
DONATIONS	600		600						
TOTAL REVENUE	986,718	474,920	48,232	114,169	72,795	5,331	122,575	135	139,785
% of Budget	41%	46%	42%	28%	29%	53%	30%	0%	73%
<b>EXPENDITURES:</b>									
PART TIME SALARIES	354,609	153,989	16,431	44,196	55,309	1,719	76,456		3,024
CONTRACTUAL SERVICES	68,244	24,495	-	40,582	1,257	1,835	75		
COMMODITIES	98,195	12,054	6,519	16,380	3,720	4,771	16,758	90	37,902
UTILITIES	472								472
TOTAL EXPENDITURES	521,519	190,538	22,950	101,158	60,285	8,325	93,290	90	41,398
% of Budget	33%	34%	24%	36%	38%	16%	32%	0%	28%
REVENUE OVER(UNDER) EXP	465,199	284,382	25,282	13,010	12,510	(2,994)	29,285	45	98,387
<b>CHANGE FROM LAST YR + (-)</b>									
REVENUE	37,775	41,872	(1,858)	5,544	(15,813)	1,465	(9,450)	18	7,220
EXPENDITURES	31,900	63,014	(8,916)	25,705	(1,495)	(1,436)	(26,151)	30	(22,336)
NET	5,875	(21,142)	7,058	(20,161)	(14,318)	2,902	16,701	(12)	29,556
<b>% CHANGE FROM LAST YEAR</b>									
REVENUE	4	10	(4)	5	(18)	38	(7)	-	5
EXPENDITURES	7	49	(28)	34	(2)	(15)	(22)	-	(35)
2016 BUDGET REVENUE	2,407,500	1,031,000	114,000	410,000	250,000	10,000	402,000	-	190,500
2016 BUDGET EXPEND	1,583,033	554,500	96,750	278,500	158,500	50,700	295,050	550	148,483
2015 REVENUE	948,944	433,048	50,090	108,625	88,608	3,866	132,025	117	132,565
2015 EXPENDITURES	489,619	127,524	31,866	75,453	61,780	9,761	119,440	60	63,734

MT PROSPECT PARK DISTRICT  
**RECPLEX**

**Revenue Recap by yr:**

2014			2015			2016		'14Budget	'15Budget	'16Budget
Month	YTD		Month	YTD		Month	YTD			
Jan	55,440	55,440	Jan	59,383	59,383	Jan	53,516	53,516	565,500	
Feb	46,731	102,171	Feb	42,677	102,060	Feb	49,059	102,575	569,500	
Mar	47,636	149,808	Mar	50,295	152,355	Mar	54,451	157,026	574,000	
April	38,187	187,995	April	38,332	190,687	April	39,734	196,761		
May	32,313	220,308	May	37,602	228,289	May	0	0		
June	35,884	256,192	June	37,994	266,283	June	0	0		
July	32,746	288,938	July	34,207	300,490	July	0	0		
Aug	27,701	316,639	Aug	33,789	334,279	Aug	0	0		
Sept	33,136	349,775	Sept	33,974	368,253	Sept	0	0		
Oct	35,134	384,909	Oct	31,633	399,886	Oct	0	0		
Nov	38,801	423,709	Nov	42,740	442,626	Nov	0	0		
Dec	50,297	474,006	Dec	49,145	491,771	Dec	0	0		



This Year Vs Last Two Years

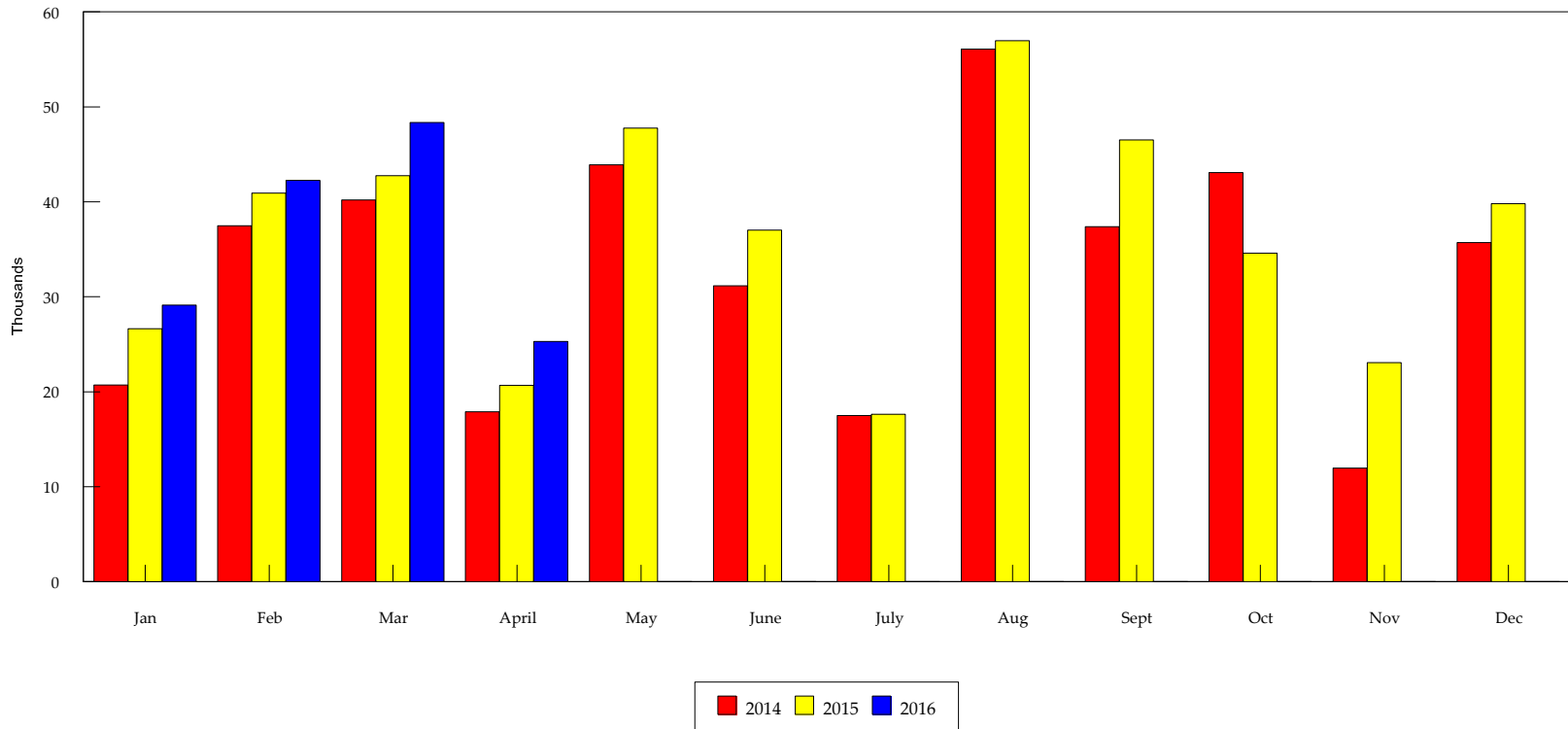
**MT PROSPECT PARK DISTRICT  
RECPLEX FACILITY REVENUE REPORT  
APRIL 2016**

	MONTH		YEAR to DATE		Up (Down)	
	This	Last	This	Last	Change	% Change
<b>RENTALS</b>						
Building Rental	5,020	2,314	22,533	17,995	4,539	25%
Lockers	-	-	-	-	-	
Total	5,020	2,314	22,533	17,995	4,539	25%
<b>PASS SALES</b>						
All Facility	10,026	9,057	44,028	39,136	4,892	13%
Gym & Track	3,913	4,188	17,571	17,777	(206)	-1%
Fitness	15,852	15,839	76,214	78,948	(2,733)	-3%
Total	29,791	29,084	137,813	135,861	1,953	1%
<b>DAILY FEES</b>						
All Facility	1,260	862	4,207	4,273	(66)	-2%
Gym & Track	3,700	5,342	21,773	26,641	(4,868)	-18%
Fitness	686	711	4,377	4,221	156	4%
Racquetball	373	265	3,134	2,252	882	39%
Playport	521	394	2,972	2,007	965	48%
Total	6,540	7,574	36,463	39,394	(2,931)	-7%
<b>PROGRAM FEES</b>						
Special Programs	1,036	1,003	6,286	1,363	4,923	361%
Total	1,036	1,003	6,286	1,363	4,923	361%
<b>CONCESSIONS</b>						
Merchandise	368	138	1,294	1,029	265	26%
Vending	2	1,373	3,469	5,526	(2,058)	-37%
Total	370	1,511	4,763	6,555	(1,793)	-27%
<b>OTHER</b>						
Visa Charges / OvSt	(3,021)	(3,154)	(11,098)	(12,520)	1,422	-11%
TOTAL	39,734	38,332	196,761	188,648	8,112	4%

## MT PROSPECT PARK DISTRICT RECPLEX POOL REVENUE

**Revenue Recap by yr:**

	2014		2015		2016		'14Budget	'15Budget	'16Budget
	Month	YTD	Month	YTD	Month	YTD			
Jan	20,707	20,707	Jan	26,632	Jan	29,132	408,900		
Feb	37,488	58,195	Feb	40,930	Feb	42,281	410,900		
Mar	40,199	98,394	Mar	42,765	Mar	48,349	431,900		
April	17,886	116,280	April	20,683	April	25,294			
May	43,916	160,196	May	47,758	May	0			
June	31,177	191,373	June	37,031	June	0			
July	17,502	208,875	July	17,625	July	0			
Aug	56,078	264,953	Aug	56,964	Aug	0			
Sept	37,373	302,326	Sept	46,529	Sept	0			
Oct	43,085	345,411	Oct	34,593	Oct	0			
Nov	11,980	357,391	Nov	23,088	Nov	0			
Dec	35,710	393,101	Dec	39,821	Dec	0			



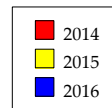
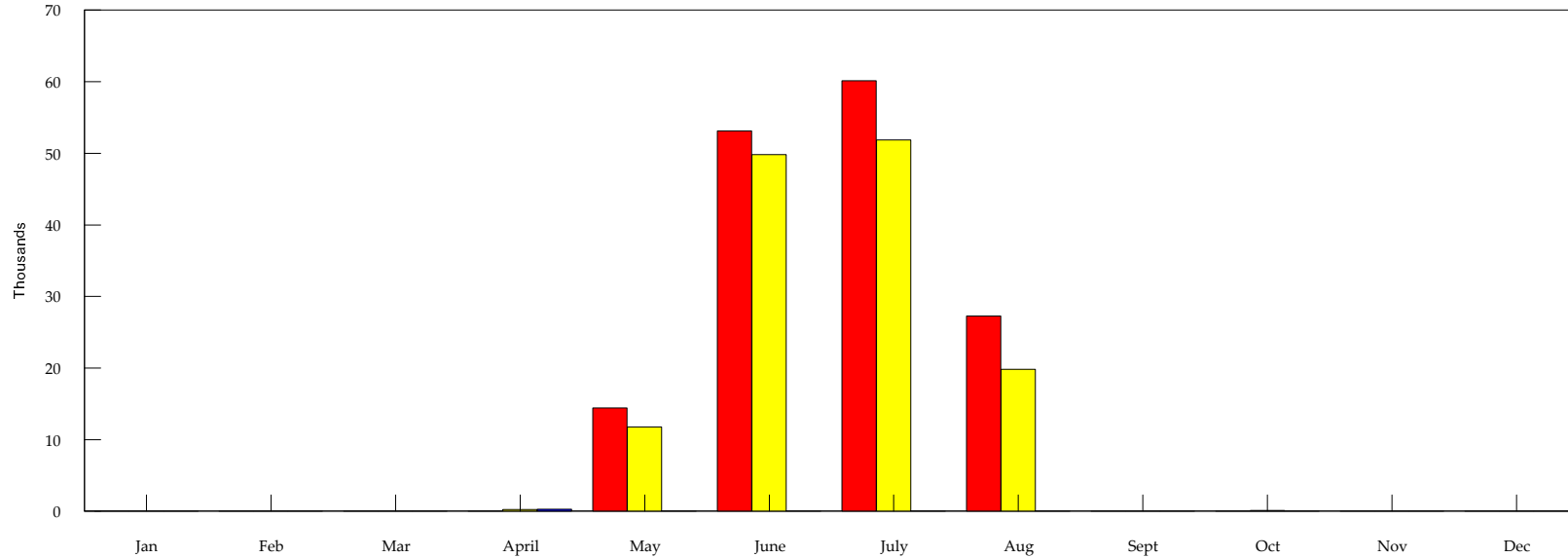
This Year Vs Last Two Years

MOUNT PROSPECT PARK DISTRICT

BIG SURF POOL

**Revenue Recap by yr:**

2014			2015			2016				
	<u>Month</u>	<u>YTD</u>		<u>Month</u>	<u>YTD</u>		<u>Month</u>	<u>YTD</u>		
Jan	0	0	Jan	0	0	Jan	0	0	'14Budget	172,010
Feb	0	0	Feb	0	0	Feb	0	0	'15Budget	173,510
Mar	0	0	Mar	0	0	Mar	0	0	'16Budget	178,500
April	0	0	April	253	253	April	295	295		
May	23,247	23,247	May	11,791	12,044	May	0	0		
June	53,981	77,228	June	49,842	61,885	June	0	0		
July	40,515	117,744	July	51,858	113,743	July	0	0		
Aug	13,537	131,281	Aug	19,812	133,555	Aug	0	0		
Sept	2	131,283	Sept	0	133,555	Sept	0	0		
Oct	0	131,283	Oct	122	133,677	Oct	0	0		
Nov	0	131,283	Nov	0	133,677	Nov	0	0		
Dec	0	131,283	Dec	0	133,677	Dec	0	295		



This Year Vs Last Two Years

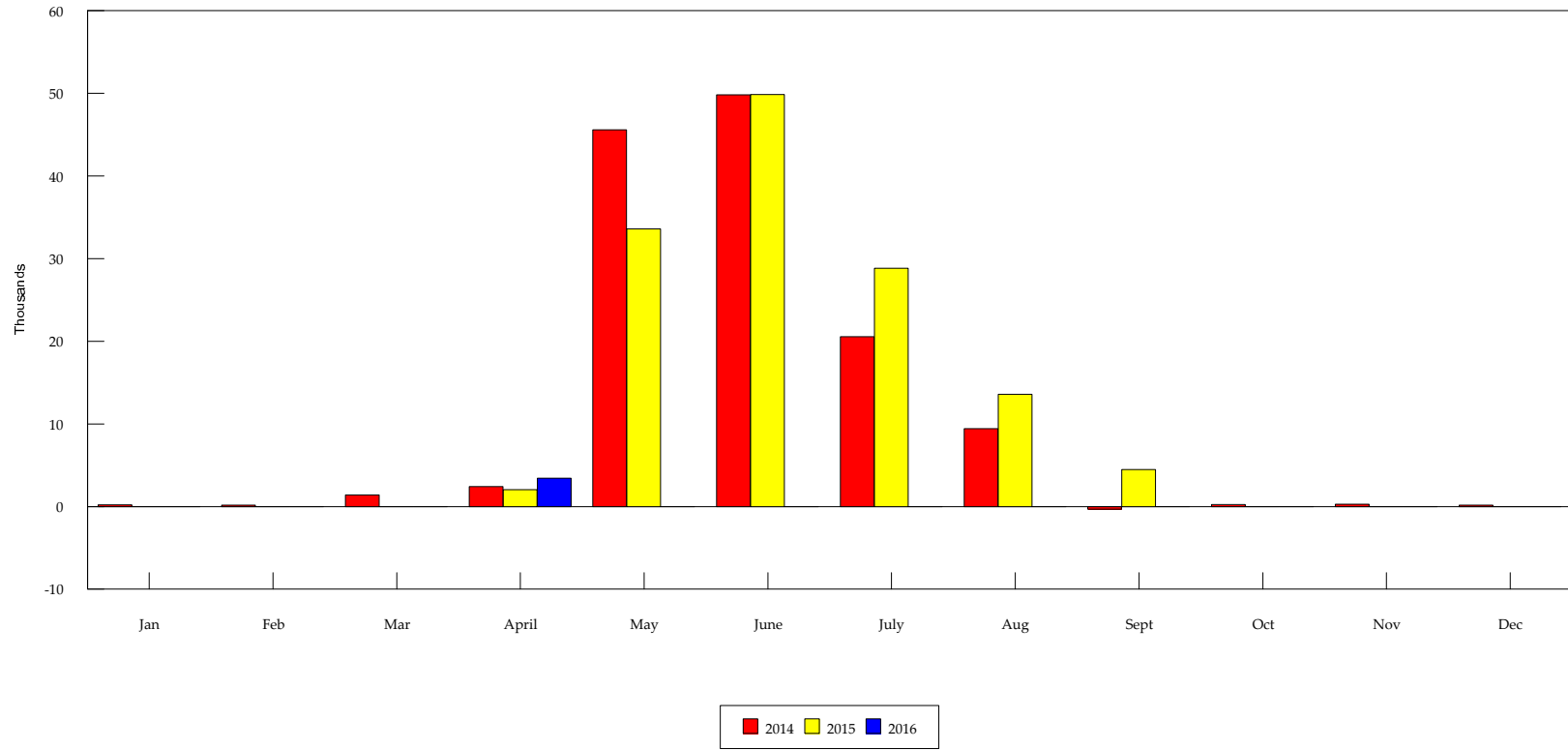
**MOUNT PROSPECT PARK DISTRICT**  
**CONCESSIONS Department by Location**  
**For Four Months Ended 4-30-16**

ACCOUNT NAMES	TOTALS	ADMIN	LIONS POOL	MEADOWS POOL	MEADOWS BALLFIELD	GRILL & 1/2 WAY	MELAS PARK	ATHLETIC FIELDS
<b>REVENUES:</b>								
PROGRAM FEES	-							
DAILY / FEES - CATERING	-							
VENDING INCOME	-							
CONCESSION SALES	3,612		1,340		905	-	1,367	-
OTHER	-							
TOTAL REVENUE	3,612	-	1,340	-	905	-	1,367	-
% of Budget	3%	n/a	2%		4%	0%	8%	
<b>EXPENDITURES:</b>								
FULL TIME SALARIES	2,066	2,066						
PART TIME SALARIES	4,515		281				4,234	-
FRINGE BENEFITS	792	792						-
CONTRACTUAL SERVICES	65						65	-
COMMODITIES	920							920
COST OF GOODS SOLD	2,283						2,283	-
UTILITIES	2,797					1,429	1,368	
SALES TAX/OTHER	118	118						
TOTAL EXPENDITURES	13,556	2,976	281	-	-	1,429	7,950	920
% of Budget	8%	19%	1%	0%	0%	18%	12%	72%
REVENUE OVER(UNDER) EXP	(9,944)	(2,976)	1,059	-	905	(1,429)	(6,583)	(920)
<b>CHANGE FROM LAST YR + (-)</b>								
REVENUE	(24)	-	1,340	-	277	-	(1,640)	-
EXPENDITURES	(717)	85	(2,104)	(49)	(1,128)	403	2,627	(552)
NET	694	(85)	3,444	49	1,405	(403)	(4,268)	552
<b>% CHANGE FROM LAST YEAR</b>								
REVENUE	(1)				44		(55)	
EXPENDITURES	(5)	3	(88)			39	49	(37)

## MT PROSPECT PARK DISTRICT MEADOWS POOL REVENUE

**Revenue Recap by yr:**

	2014		2015		2016					
	<u>Month</u>	<u>YTD</u>	<u>Month</u>	<u>YTD</u>	<u>Month</u>	<u>YTD</u>				
Jan	200	200	Jan	0	0	Jan	0	0	'14Budget	151,400
Feb	175	375	Feb	0	0	Feb	0	0	'15Budget	153,400
Mar	1,394	1,769	Mar	0	0	Mar	0	0	'16Budget	156,400
April	2,432	4,201	April	2,049	2,049	April	3,449	3,449		
May	45,585	49,786	May	33,586	35,634	May	0	0		
June	49,819	99,605	June	49,848	85,482	June	0	0		
July	20,570	120,175	July	28,835	114,317	July	0	0		
Aug	9,420	129,594	Aug	13,587	127,904	Aug	0	0		
Sept	(312)	129,282	Sept	4,480	132,384	Sept	0	0		
Oct	250	129,532	Oct	0	0	Oct	0	0		
Nov	300	129,832	Nov	0	0	Nov	0	0		
Dec	175	130,007	Dec	0	0	Dec	0	0		

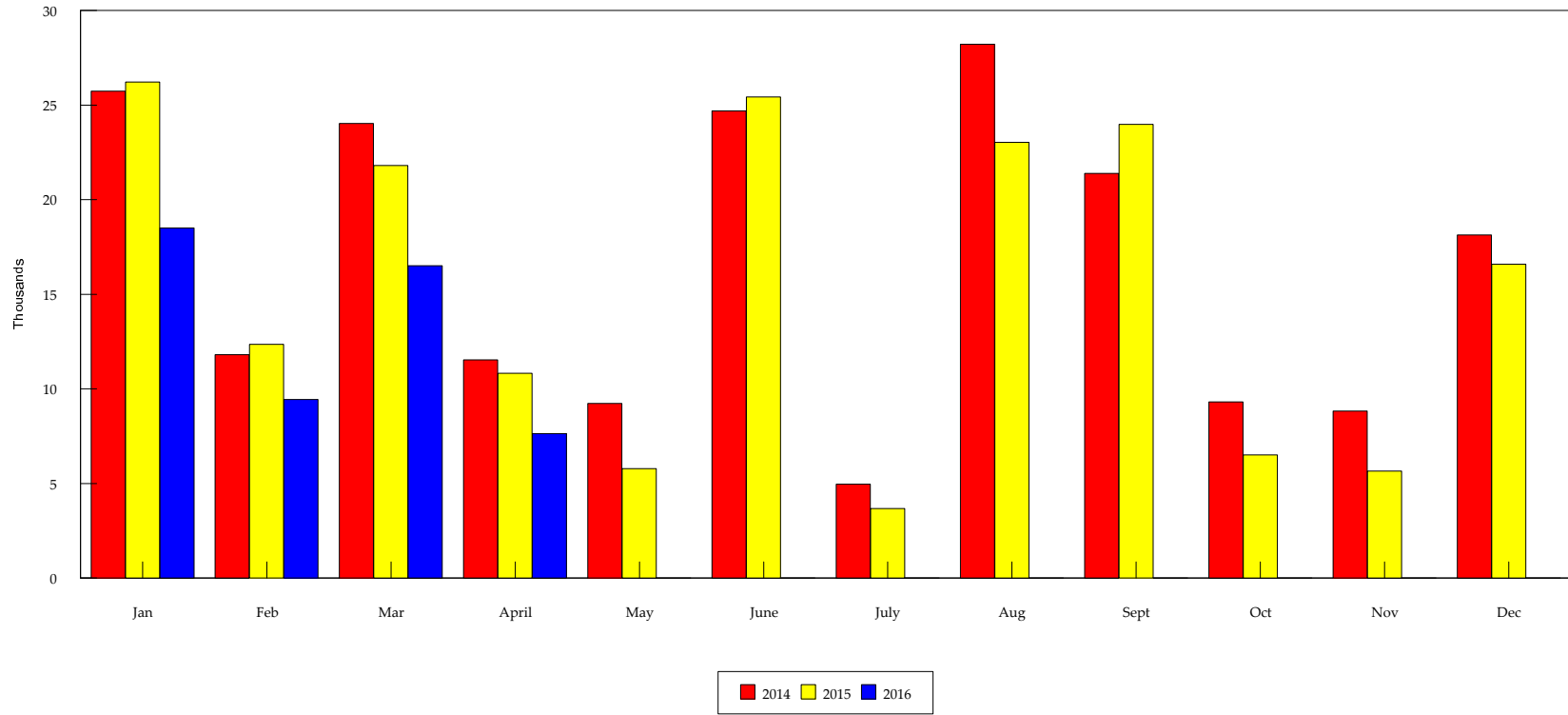


This Year Vs Last Two Years

## MT PROSPECT PARK DISTRICT CENTRAL PROGRAM REVENUE

**Revenue Recap by yr:**

2014			2015			2016				
	Month	YTD		Month	YTD		Month	YTD		
Jan	25,744	25,744	Jan	26,229	26,229	Jan	18,513	18,513	'14Budget	201,500
Feb	11,809	37,553	Feb	12,364	38,593	Feb	9,440	27,953	'15Budget	204,000
Mar	24,034	61,587	Mar	21,817	60,410	Mar	16,506	44,459	'16Budget	200,000
April	11,531	73,118	April	10,834	71,244	April	7,645	52,104		
May	9,231	82,349	May	5,796	77,040	May	0	0		
June	24,693	107,042	June	25,428	102,468	June	0	0		
July	4,961	112,003	July	3,680	106,148	July	0	0		
Aug	28,213	140,216	Aug	23,040	129,188	Aug	0	0		
Sept	21,394	161,610	Sept	23,984	153,172	Sept	0	0		
Oct	9,321	170,931	Oct	6,509	159,681	Oct	0	0		
Nov	8,825	179,756	Nov	5,663	165,344	Nov	0	0		
Dec	18,142	197,898	Dec	16,589	181,933	Dec	0	0		



This Year Vs Last Year



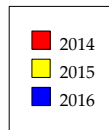
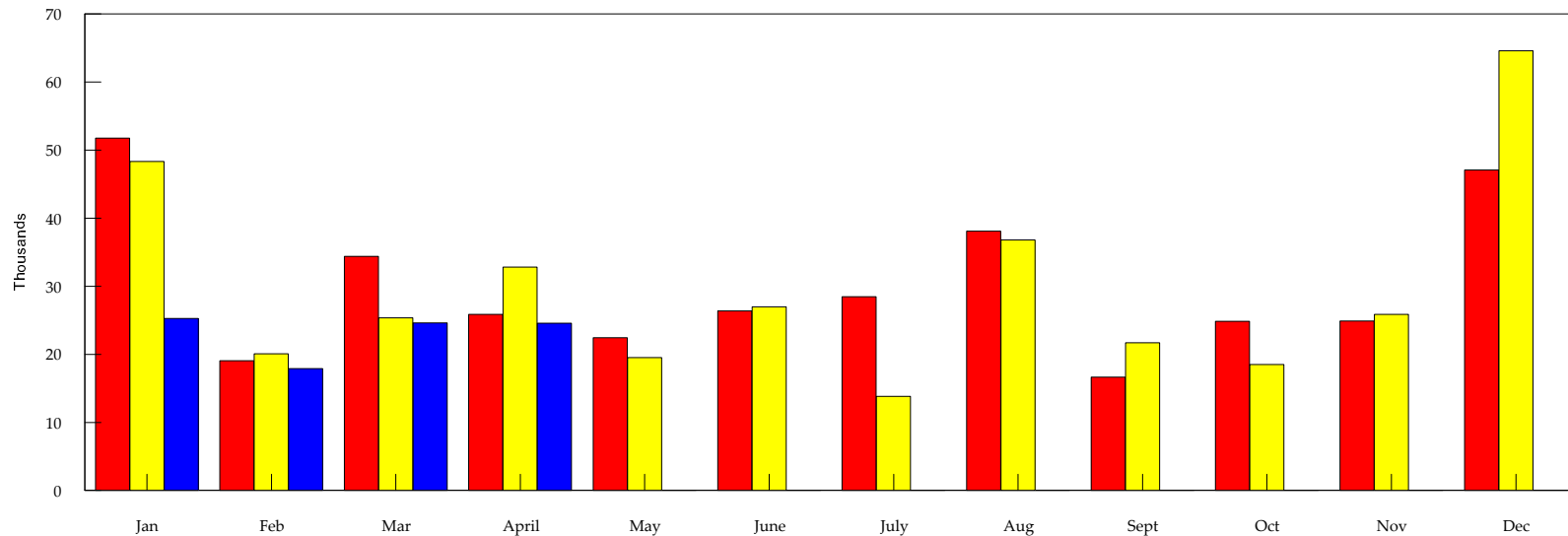
**MOUNT PROSPECT PARK DISTRICT**  
**CENTRAL PROGRAMS Department by Function**  
**Month Ended 4-30-16**

ACCOUNT NAMES	33% of Year				
	TOTALS	YOUTH/ CHILD CARE	ADULT	ATHLETICS YOUTH	ARTS
REVENUES:					
PROGRAM FEES	52,104	16,313	2,100	31,603	2,088
CHILD CARE	-				
DONATIONS	-		-		
TOTAL REVENUE	52,104	16,313	2,100	31,603	2,088
% of Budget	26%	28%	26%	25%	26%
EXPENDITURES:					
PART TIME SALARIES	10,470	10,470		-	
CONTRACTUAL SERVICES	18,127	-		16,886	1,241
COMMODITIES	36	36		-	
TOTAL EXPENDITURES	28,633	10,506	-	16,886	1,241
% of Budget	21%	31%	0%	18%	21%
REVENUE OVER(UNDER) EXP	23,471	5,807	2,100	14,717	848
CHANGE FROM LAST YR + (-)					
REVENUE	(17,835)	(5,631)	1,500	(12,479)	(1,225)
EXPENDITURES	(13,980)	(2,111)	-	16,886	(122)
NET	(3,855)	(3,520)	1,500	(29,365)	(1,104)
% CHANGE FROM LAST YEAR					
REVENUE	(26)	(26)		(28)	(37)
EXPENDITURES	105	(17)		-	-

## MT PROSPECT PARK DISTRICT CENTRAL COMMUNITY CENTER

**Revenue Recap by yr:**

	2014		2015		2016					
	Month	YTD	Month	YTD	Month	YTD				
Jan	51,748	51,748	Jan	48,330	48,330	Jan	25,255	25,255	'14Budget	370,000
Feb	19,083	70,831	Feb	20,103	68,433	Feb	17,914	43,169	'15Budget	385,600
Mar	34,382	105,213	Mar	25,367	93,800	Mar	24,639	67,808	'16Budget	384,100
April	25,855	131,068	April	32,836	126,636	April	24,566	92,374		
May	22,438	153,506	May	19,544	146,180	May	0	0		
June	26,385	179,891	June	26,986	173,166	June	0	0		
July	28,447	208,337	July	13,839	187,005	July	0	0		
Aug	38,086	246,423	Aug	36,808	223,813	Aug	0	0		
Sept	16,668	263,091	Sept	21,706	245,519	Sept	0	0		
Oct	24,834	287,925	Oct	18,487	264,006	Oct	0	0		
Nov	24,923	312,847	Nov	25,867	289,873	Nov	0	0		
Dec	47,070	359,918	Dec	64,583	354,455	Dec	0	0		



This Year Vs Last Two Years

**MT PROSPECT PARK DISTRICT  
CENTRAL FACILITY REVENUE REPORT  
APRIL 2016**

	MONTH		YEAR to DATE		Change	Up/(Down) % Change
	This	Last	This	Last		
<b>RENTALS</b>						
Skate Rental	458	212	1,519	2,029	(510)	-25%
Building Rental	6,311	5,887	23,136	24,383	(1,247)	-5%
	6,769	6,099	24,655	26,412	(1,757)	-7%
<b>PASS SALES</b>						
Fitness	8,458	8,259	40,080	40,906	(827)	-2%
	8,458	8,259	40,080	40,906	(827)	-2%
<b>DAILY FEES</b>						
Gym Fees	238	388	1,550	2,164	(614)	-28%
Fitness Center	476	308	1,958	1,695	263	16%
Inline Rink Fees	1,088	481	3,290	4,319	(1,029)	-24%
	1,802	1,177	6,798	8,178	(1,380)	-17%
<b>PROGRAM FEES</b>						
Adult Athletic Leagues	-	9,830	-	8,800	(8,800)	-100%
Youth Athletic Camps	-	3,500	-	4,860	(4,860)	0%
Youth Athletic Prog.	775	3,165	2,660	6,576	(3,916)	-60%
Youth Leagues	6,640	225	15,915	25,420	(9,505)	-37%
Special Programs	1,133	2,387	5,462	8,690	(3,229)	-37%
	8,548	19,107	24,037	54,346	(30,310)	-56%
<b>CONCESSIONS</b>						
Merchandise	538	104	1,330	664	666	100%
Vending	-	301	1,166	1,101	65	6%
	538	405	2,497	1,765	732	41%
<b>OTHER</b>						
Visa Charges / OvShrt	(1,549)	(1,100)	(5,692)	(4,368)	(1,324)	30%
<b>TOTAL</b>	<b>24,566</b>	<b>33,947</b>	<b>92,374</b>	<b>127,239</b>	<b>(34,865)</b>	<b>-27%</b>

**ACCOUNTS PAYABLE/PAYROLL DISBURSEMENT**  
**April-16**

**ACCOUNTS PAYABLE**

Suggested Motion: I move to ratify April Accounts Payable checks and EFT's  
in the amount of \$995,976.10 as listed on the April Check Registers.

<u>CHECK DATE</u>			<u>CHECK #S</u>	
4/1/2016	\$	377,901.30	184262-184331	Checks
4/8/2016	\$	192,257.33	184332-184377	Checks
4/15/2016	\$	110,860.66	184378-184455	Checks
4/22/2016	\$	186,309.60	184456-185515	Checks
4/29/2016	\$	128,647.21	184516-184593	Checks
<b>SUB TOTAL AP</b>	<b>\$</b>	<b>995,976.10</b>		
<b>TOTAL AP</b>	<b>\$</b>	<b><u>995,976.10</u></b>	<b>Checks and EFT's</b>	

**PAYROLL**

Suggested Motion: I move to ratify April Payroll checks and Direct Deposits  
in the amount of \$309,329.38 as listed on this report.

<u>CHECK DATE</u>			<u>CHECK #/S</u>	
4/8/2016	\$	134,056.39	15492-15760	DD Notification
	\$	14,632.65	227260-227346	Checks
4/22/2016		143,597.34	15761-16053	DD Notification
		17,043.00	227347-227442	Checks
<b>TOTAL P/R</b>	<b>\$</b>	<b><u>309,329.38</u></b>	<b>Checks and Direct Deposits</b>	



**Mount Prospect Park District**  
**Consolidated Revenue/Expense**  
**April 2016**

	April 2016	YTD 2016	Budget 2016	April 2015	YTD 2015
<b>REVENUE</b>			<i>(in progress)</i>		
10 General Fund	35,351	1,166,684	2,277,166	54,486	1,110,563
20 Recreation Fund	457,689	2,548,415	7,471,534	355,261	2,184,088
21 Paving and Lighting		38,929	73,606	706	35,603
23 Social Security Fund		192,852	354,320	6,108	301,804
24 Liability Insurance Fund		330,672	620,060	7,303	358,576
25 NWSRA Fund		311,433	588,849	5,648	284,825
26 IMRF Fund		421,604	803,400	6,065	299,366
27 Conservatory Fund	6,577	416,019	864,908	10,953	375,048
28 Internal Service Fund		128,311	411,725		181,986
30 Bond & Interest Fund		1,649,498	4,794,222	32,436	1,600,094
70 2014 Capital Project					
92 2012 Capital Project					
93 2013 Capital Project				-	-
94 2014 Capital Project	924	3,239	5,421	15,000	15,000
<b>Total</b>	<b>500,540</b>	<b>7,207,656</b>	<b>18,265,211</b>	<b>493,965</b>	<b>6,746,952</b>
<b>EXPENSE</b>					
10 General Fund	180,254	732,732	2,255,991	202,871	731,758
20 Recreation Fund	599,975	2,162,942	7,352,158	426,634	2,184,088
21 Paving and Lighting	5,340	28,547	100,000	2,660	6,052
23 Social Security Fund	31,726	142,639	510,000	32,223	139,444
24 Liability Insurance Fund	20,983	96,026	660,389	22,524	325,850
25 NWSRA Fund		203,987	1,294,456	3,048	171,899
26 IMRF Fund	58,620	206,478	736,800	80,213	193,105
27 Conservatory Fund	66,821	255,672	813,901	59,496	241,316
28 Internal Service Fund	24,318	71,903	411,725	27,215	88,851
30 Bond & Interest Fund	221,828	221,828	4,720,100	329,714	329,714
70 2014 Capital Project	10,314	81,856	671,555	37,619	117,280
92 2012 Capital Project					
93 2013 Capital Project		45,447	63,709	500	15,009
94 2014 Capital Project	23,863	68,618	216,730	8,549	191,295
95 2015 Capital Project	64,956	177,680	936,862		
<b>Total</b>	<b>1,308,998</b>	<b>4,496,354</b>	<b>20,744,376</b>	<b>1,233,265</b>	<b>4,735,662</b>
Total Revenue	500,540	7,207,656	18,265,211	493,965	6,746,952
Total Expense	1,308,998	4,496,354	20,744,376	1,233,265	4,735,662
Net Income/Loss	(808,458)	2,711,302	(2,479,165)	(739,300)	2,011,290

**MT. PROSPECT PARK DISTRICT  
PROPERTY TAX  
MONTH ENDING  
4/30/2016**

<u>Tax Yr.</u>	<u>Property Tax Jan. 1 - Dec. 31</u>	<u>Assessed Valuation</u>	<u>Rate</u>
2011	10,076,800	1,794,142,635	0.502
2012	9,098,317	1,653,835,662	0.557
2013	8,762,986	1,413,453,067	0.657

---

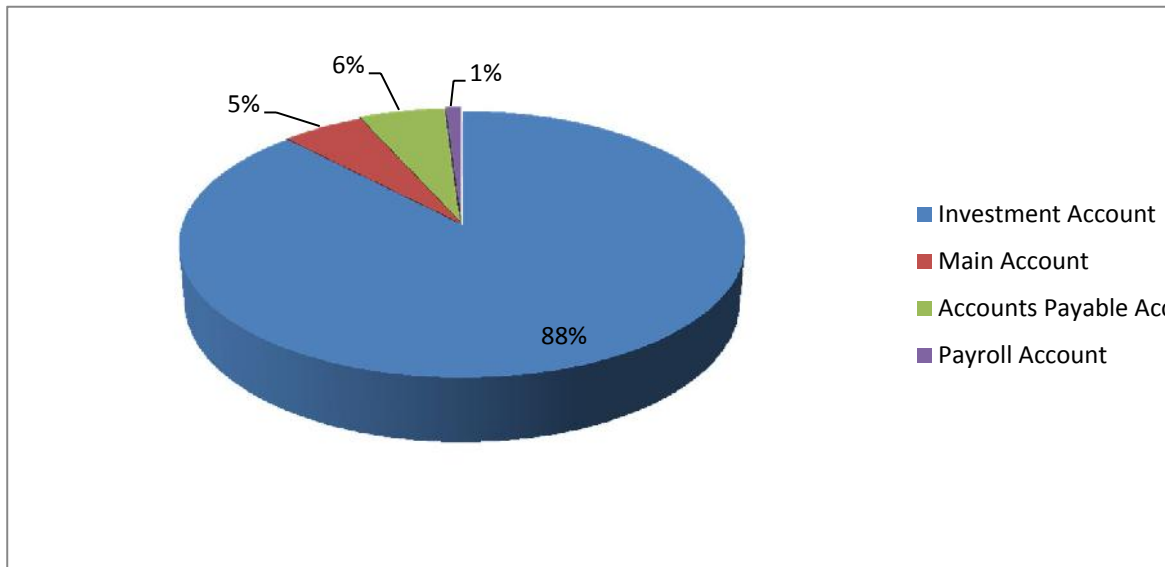
Tax Monies Received from January 1, 2016 through April 30, 2016 totals:  
\$5,072,979 (of this total, \$8,898 is Replacement Tax).

	<b>Type</b>	<b>2015 Taxes</b>	<b>2016 Taxes</b>
January	R	23,439	22,156
January		172,159	168,979
February		1,421,225	1,409,855
March	R	6,691	8,898
March		3,206,116	3,463,090
April	R	40,951	
April		99,399	
May	R	33,740	
May		44,904	
June		34,035	
July	R	27,718	
July		1,437,232	
August	R	3,736	
August		2,853,079	
September		152,057	
October	R	27,864	
October		5,634	
November		13,812	
December		24,216	
December	R	6,805	
<b>TOTAL</b>		<b>9,634,812</b>	<b>5,072,979</b>

**Mt. Prospect Park District**  
**Statement of Account Balances**  
**As of April 30, 2016**

**Mt. Prospect State Bank**

Accounts	Bank Balance	Interest Rate	YTD Interest
Investment Account	7,412,865.59	0.17	2,752.96
Main Account	459,683.68	n/a	
Accounts Payable Account	479,041.95	n/a	
Payroll Account	85,918.35	n/a	
Petty Cash	4,080.00	n/a	
<b>Total Funds</b>	<b>8,441,589.57</b>		





70 Fund

70 Fund

**Mt Prospect Park District**  
**Capital Projects Update - FY 2016**  
**Apr-16**  
**Fund 70 2014 Capital IMPR Fund**

<b>Account #</b>	<b>Description</b>	<b>Budget</b>	<b>April</b>	<b>Y-T-D Actual</b>	<b>Difference</b>	<b>Comments</b>
<u>Rec Plex Center</u>						
811926	Rec Plex Strength Upgrades	5,300			5,300	
813410	Rec Plex Cardio Update	42,000			42,000	
813640	Rec Plex Gym Fan	17,000			17,000	
813700	Rec Plex Common Area Furniture	8,000			8,000	
	Total Rec Plex Center	72,300	-	-	72,300	
<u>Park Improvements</u>						
845016	Clearwater Playground Equipment	112,500			112,500	
845633	Lions Bandshell Re-Leveling	30,000			30,000	
846700	Billings for Projects	24,044		24,044	-	
846735	Tree Removal/Replacement Trees	41,000			41,000	
846940	Majewski Backup Extensions	16,000			16,000	
846950	Baseball/Softball Fence Upgrades	37,100			37,100	
849500	WEGO Park Renovation	62,500	2,960	2,960	59,540	
849510	Com Ed Path System- Phase 2	80,000	2,593	4,176	75,824	
859520	All Parks Playground Repair Parts	5,000			5,000	
849530	MSD Berm Removal	6,000			6,000	
849640	Golf Renovation - Gen Trades	30,923			30,923	
849645	Golf Renovation - Growing	2,476			2,476	
849660	Golf Renovation - Professional	5,042			5,042	
849705	Golf Cart GPS	38,916		38,916	-	
849720	Einstein Park	34,096			34,096	
	Total Park Improvements	525,597	5,553	70,096	455,501	
<u>Equipment</u>						
855019	Lions Tennis Windscreen	1,500		1,147	353	
855163	Powerheart G3AED's	10,800		5,852	4,948	
856820	Phone System	1,858			1,858	
858215	CCC Cardio Update	34,000			34,000	
858330	Portable Sound System	6,500			6,500	
858346	Athletic Wireless Scoreboard Conv	6,500	4,761	4,761	1,739	
858580	Ice Rink Liners	1,500			1,500	
858600	Studio Tables & Chairs	4,000			4,000	
858610	Athletic Equipment Boxes	7,000			7,000	
	Total Equipment	73,658	4,761	11,761	61,897	
	Total Expenditure	671,555	10,314	81,856	589,699	

93 Fund

93 Fund

**Mt Prospect Park District  
Capital Projects Update - FY 2016  
Apr-16  
Fund 93 2013 Capital IMPR Fund**

Account #	Description	Budget	April	Y-T-D Actual	Difference	Comments
<u>Rec Plex Center</u>						
813620	Drinking Fountain Upgrade	6,228		6,228	-	
	Total Rec Plex Center	6,228	-	6,228	-	
<u>Park Improvements</u>						
846700	Billings for Projects	39,219	-	39,219	-	
	Total Park Improvements	39,219	-	39,219	-	
<u>Buildings</u>						
861650	Lions Compressor Repairs	18,262	-	-	18,262	Balance in 94 Fund
	Total Buildings	18,262	-	-	18,262	
	Total Expenditure	63,709	-	45,447	18,262	

94 Fund

94 Fund

**Mt Prospect Park District  
Capital Projects Update - FY 2015  
Apr-16  
Fund 94 2014 Capital IMPR Fund**

Account #	Description	Budget	April	Y-T-D Actual	Difference	Comments
<u>Rec Plex Center</u>						
812100	Large Fans Rec Plex Gym	11,510			11,510	
813630	Replace Upgrade Tv's	2,290		-	2,290	
	Total Rec Plex Center	13,800	-	-	13,800	
<u>Park Improvements</u>						
846700	Billing for Projects	13,500		13,500	-	
846735	Tree Removal & Inv Plan Phase 1	8,310	-	-	8,310	
847010	All Parks/Ball Mix	10,000			10,000	
849410	Walkingpath Repairs - ComEd	13,010		13,010	-	
849510	Majewski Sign Permits	8,837		-	8,837	
	Total Park Improvements	53,657	-	26,510	27,147	
<u>Equipment</u>						
855024	Lions Center Roller Shade	5,013		-	5,013	
855085	Argimetal Blower-MPGC	4,500			4,500	
855400	Technology Equipment & Svcs	7,978		2,365	5,613	
855460	Computer System	6,400	875	3,501	2,899	
856820	Exercise Mat Replacement	4,448			4,448	
857250	Grounds Equipment Repairs	11,775			11,775	
858330	Portable Sound System	4,597		-	4,597	
858362	GC Launch Monitor	8,000	2,448	2,448	5,552	
	Total Equipment	52,711	3,323	8,313	44,398	
<u>Buildings</u>						
861650	Lions Compressor Repairs	17,238		-	17,238	Balance in 93 Fund
862420	Studio Parking Lot Repair	15,074		455	14,619	
863154	FPC Pond Erosion Control	10,000	6,340	6,340	3,660	
	Total Buildings	42,312	6,340	6,795	35,517	
<u>Pools</u>						
880900	Big Surf Consulting	30,000	14,200	27,000	3,000	
882100	Recplex Pool Pak	24,250		-	24,250	
	Total Pools	54,250	14,200	27,000	27,250	
	Total Expenditure	216,730	23,863	68,618	148,112	

95 Fund

95 Fund

**Mt Prospect Park District**  
**Capital Projects Update - FY 2016**  
**Apr-16**  
**Fund 95 2015 Capital IMPR Fund**

Account #	Description	Budget	April	Y-T-D Actual	Difference	Comments
<u>Rec Plex Center</u>						
813630	Rec Plex Automated Control System	8,000			8,000	
	Total Rec Plex Center	8,000	-	-	8,000	
<u>Park Improvements</u>						
845010	Clearwater Walking Path	68,000		2,950	65,050	
845154	Friendship/Meadow Parking Lot	21,800	306	2,823	18,978	
846700	Billing for Projects	334,962		51,548	283,414	
849600	GC Opening Marketing/Promotions	12,000	4,675	5,825	6,175	
849705	Golf Cart GPS Lease	39,000			39,000	
	Total Park Improvements	475,762	4,981	63,146	412,617	
<u>Equipment</u>						
855062	Garbage Compactor Truck	100,000	39,605	39,605	60,395	
855400	Software/Computer Network	62,600	6,793	26,303	36,297	
856850	Green Mowers	37,500			37,500	
858500	Stake Side Truck w Lift Gate	36,000			36,000	
858570	Custodial Maintenance Equip	8,500	2,834	2,834	5,666	
858590	Tor Diesel Z Turn Mower	21,000			21,000	
	Total Equipment	265,600	49,233	68,743	196,857	
<u>Buildings</u>						
861770	CCC Parking Lot	130,500		3,134	127,366	
862140	CCC Fence Replacement	6,500	6,147	6,147	353	
862150	CCC Loading Dock Door	5,500			5,500	
862160	CCC RTU Assessment	3,500			3,500	
862307	Clubhouse TV's/Sound System	6,000	1,359	4,424	1,576	
862320	Golf Course Furniture/Fixtures	5,000	749	4,226	774	
862330	Security Camera System	3,000			3,000	
862360	Colf Clubhouse Carpet	25,000		25,372	(372)	
865460	MSD Mens Restroom Partitions	2,500	2,487	2,487	13	
	Total Buildings	187,500	10,743	45,792	141,708	
	Total Expenditure	936,862	64,956	177,680	759,182	

## **UNFINISHED BUSINESS SUMMARY**

### **MAY • 2016**

---

#### **A. Big Surf Pool – Potential Renovation • (Discussion)**

As you recall, at the Special Meeting held on March 16, FGM presented several options for the potential renovation of Big Surf pool. As a recap, copies of just the options and their cost estimates are included in the Board Packet.

*New Options/Cost Estimates* (information included with the Board Packet)

After the March Board Meeting, staff held a follow-up meeting with FGM and asked for some additional less expensive options. FGM was asked to provide concepts and cost estimates for the following:

- Resurfacing of Big Surf Pool
- Replacement of wave equipment
- Construction of a separate Splash Pad at Big Surf which could be operated independently from Big Surf
- Construction of a separate outdoor Splash Pad at RecPlex – replacing the sand volleyball area on the south side of the RecPlex building.

#### *Board Direction Needed*

At the Board Meeting, Brian Taylor will review the options presented at the March 2016 Special Meeting, along with the new options. Pending discussions at the Board Meeting, staff would like a consensus from the Board if the desire is:

1. To pursue any of the options presented at the March 2016 Special Meeting.
2. Pursue the new options presented at this meeting.
3. Put the renovation of Big Surf on hold until a future time.



# Mt. Prospect Park District Big Surf Wave Pool Renovation Initial Concepts

**May 20, 2016**  
**NOTE: This Packet contains renovation options only that were presented at March 2016 Special Meeting. Does not include demographics or operating cost estimates.**





# Big Surf Wave Pool Aerial Photo

**EXISTING POOL AMENITIES:**

ZERO-DEPTH ENTRY TO 10' DEEP WATER

1M DIVING BOARD(S)

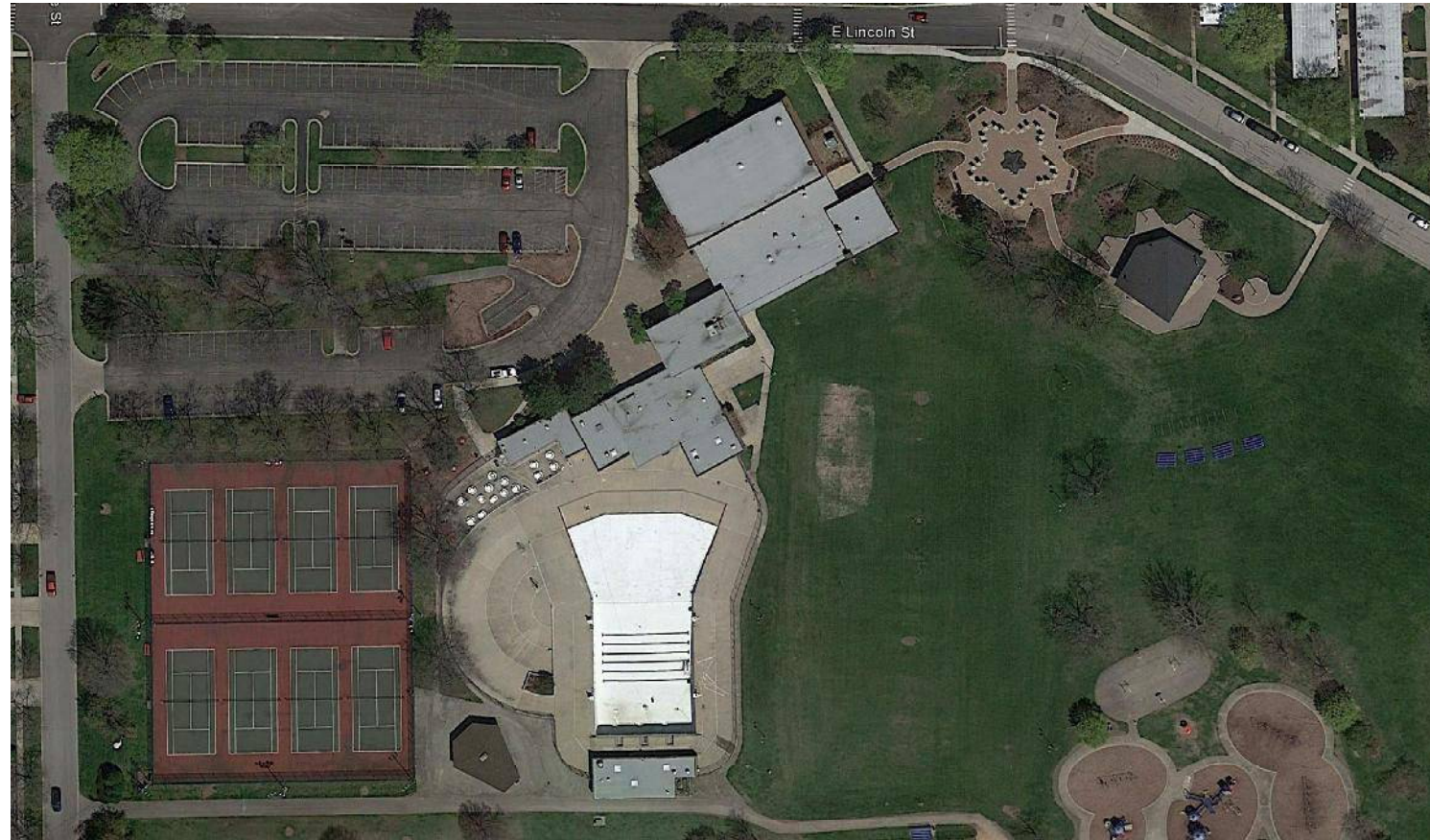
WAVE POOL

**SUN AREA AMENITIES:**

CONCRETE DECK AREA

**CONCESSIONS AMENITIES:**

DESIGNATED CONCESSIONS DECK



# Concept Plan – OPTION A

## PRELIMINARY BUDGET \$5.2 million

### RENOVATED WAVE POOL AMENITIES:

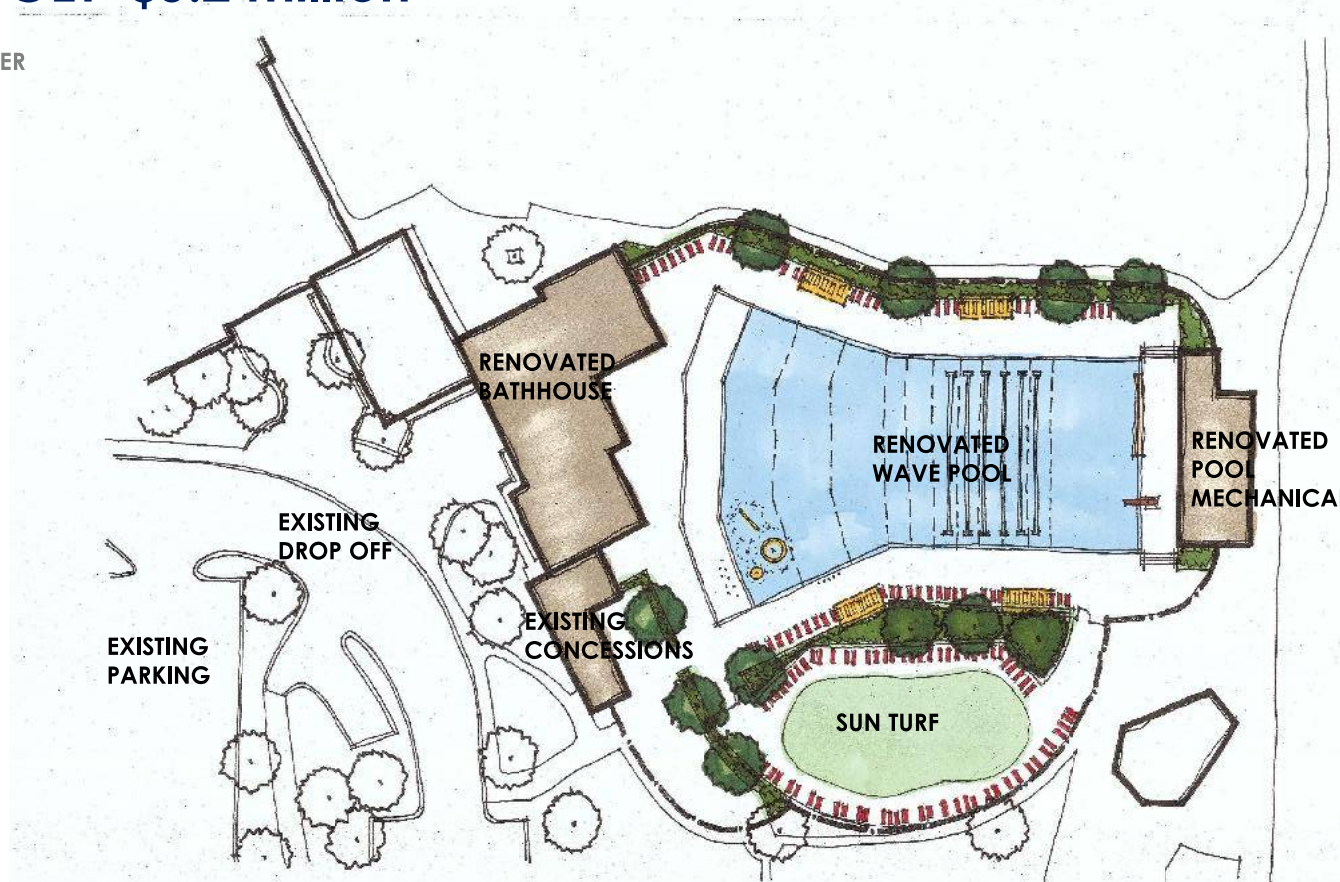
- ZERO-DEPTH ENTRY TO 10' DEEP WATER
- 1M DIVING BOARD
- CLIMBING WALL
- ACTIVE WATER / SPRAY FEATURES
- SHADE

### SUN AREA AMENITIES:

- TURF (GRASS) AREA

### CONCESSIONS AMENITIES:

- DESIGNATED CONCESSIONS DECK





# Renovated Wave Pool Amenities

**RENOVATED WAVE POOL AMENITIES:**  
ZERO-DEPTH ENTRY TO 10' DEEP WATER  
1M DIVING BOARD  
CLIMBING WALL  
ACTIVE WATER / SPRAY FEATURES  
SHADE



# Concept Plan – OPTION B

## PRELIMINARY BUDGET \$6.0 million

### RENOVATED WAVE POOL AMENITIES:

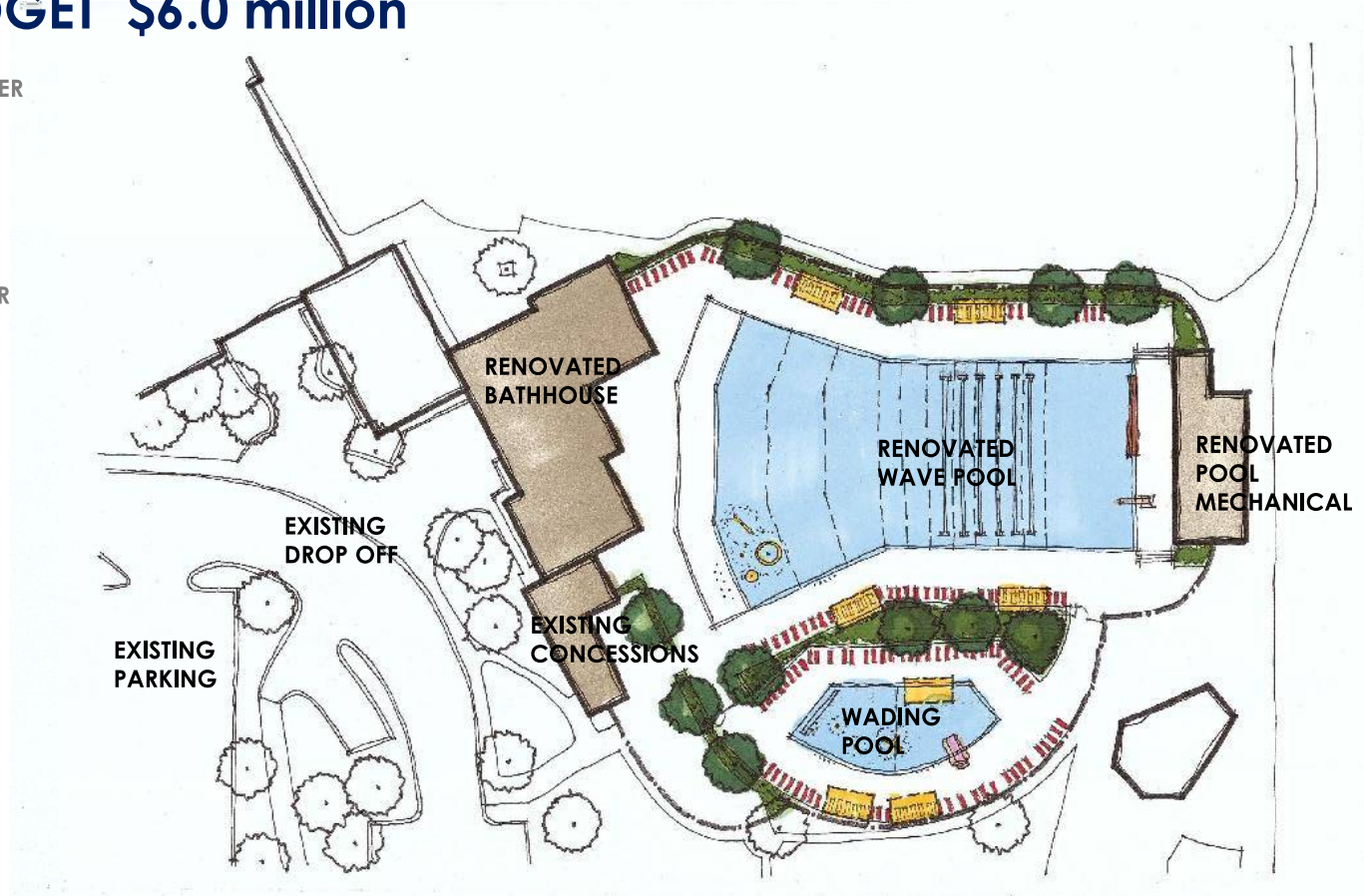
- ZERO-DEPTH ENTRY TO 10' DEEP WATER
- 1M DIVING BOARD
- CLIMBING WALL
- ACTIVE WATER / SPRAY FEATURES
- SHADE

### WADING POOL AMENITIES:

- ZERO-DEPTH ENTRY TO 2' DEEP WATER
- ACTIVE WATER PLAY AREAS
- TOT WATER SLIDE
- PASSIVE WATER AREA
- SHADE

### CONCESSIONS AMENITIES:

- DESIGNATED CONCESSIONS DECK





# Wading Pool Amenities

## WADING POOL AMENITIES:

ZERO-DEPTH ENTRY TO 2' DEEP WATER

ACTIVE WATER PLAY AREAS

TOT WATER SLIDE

PASSIVE WATER AREA

SHADE



# Concept Plan – OPTION B+

## PRELIMINARY BUDGET \$7.1 million

### RENOVATED WAVE POOL AMENITIES:

- ZERO-DEPTH ENTRY TO 10' DEEP WATER
- 1M DIVING BOARD
- CLIMBING WALL
- ACTIVE WATER / SPRAY FEATURES
- SHADE

### WADING POOL AMENITIES:

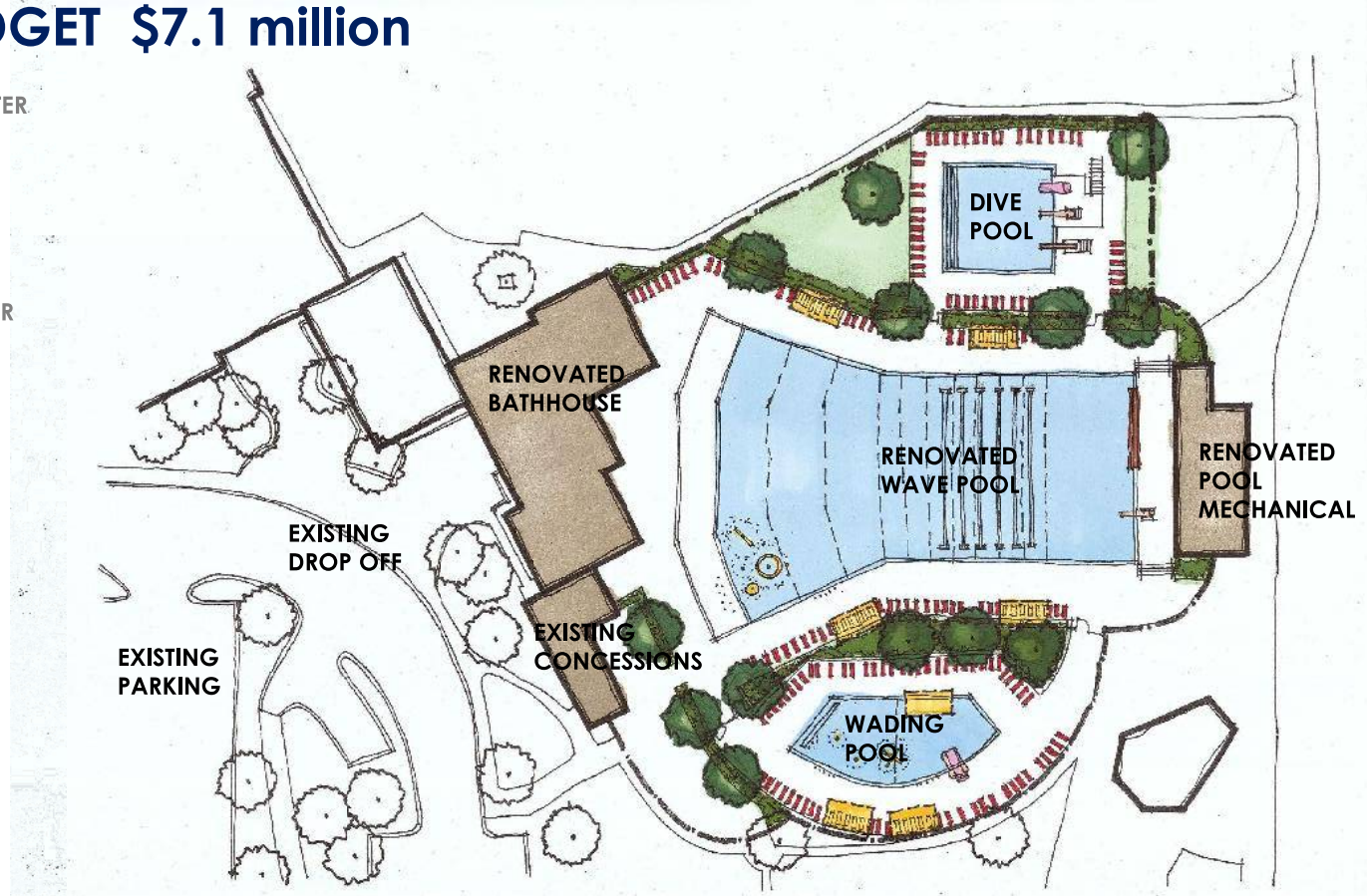
- ZERO-DEPTH ENTRY TO 2' DEEP WATER
- ACTIVE WATER PLAY AREAS
- TOT WATER SLIDE
- PASSIVE WATER AREA
- SHADE

### DIVE POOL AMENITIES:

- 1M DIVING BOARD
- 3M DIVING BOARD
- DROP SLIDE

### CONCESSIONS AMENITIES:

- DESIGNATED CONCESSIONS DECK





# Dive Pool Amenities

## DIVE POOL AMENITIES:

1M DIVING BOARD

3M DIVING BOARD

DROP SLIDE



FGM ARCHITECTS

# Concept Plan – OPTION D.1

## PRELIMINARY BUDGET \$7.3 million

### NEW WAVE POOL AMENITIES:

- ZERO-DEPTH ENTRY TO 10' DEEP WATER
- 1M DIVING BOARD
- CLIMBING WALL
- ACTIVE WATER / SPRAY FEATURES
- SHADE

### LEISURE POOL AMENITIES:

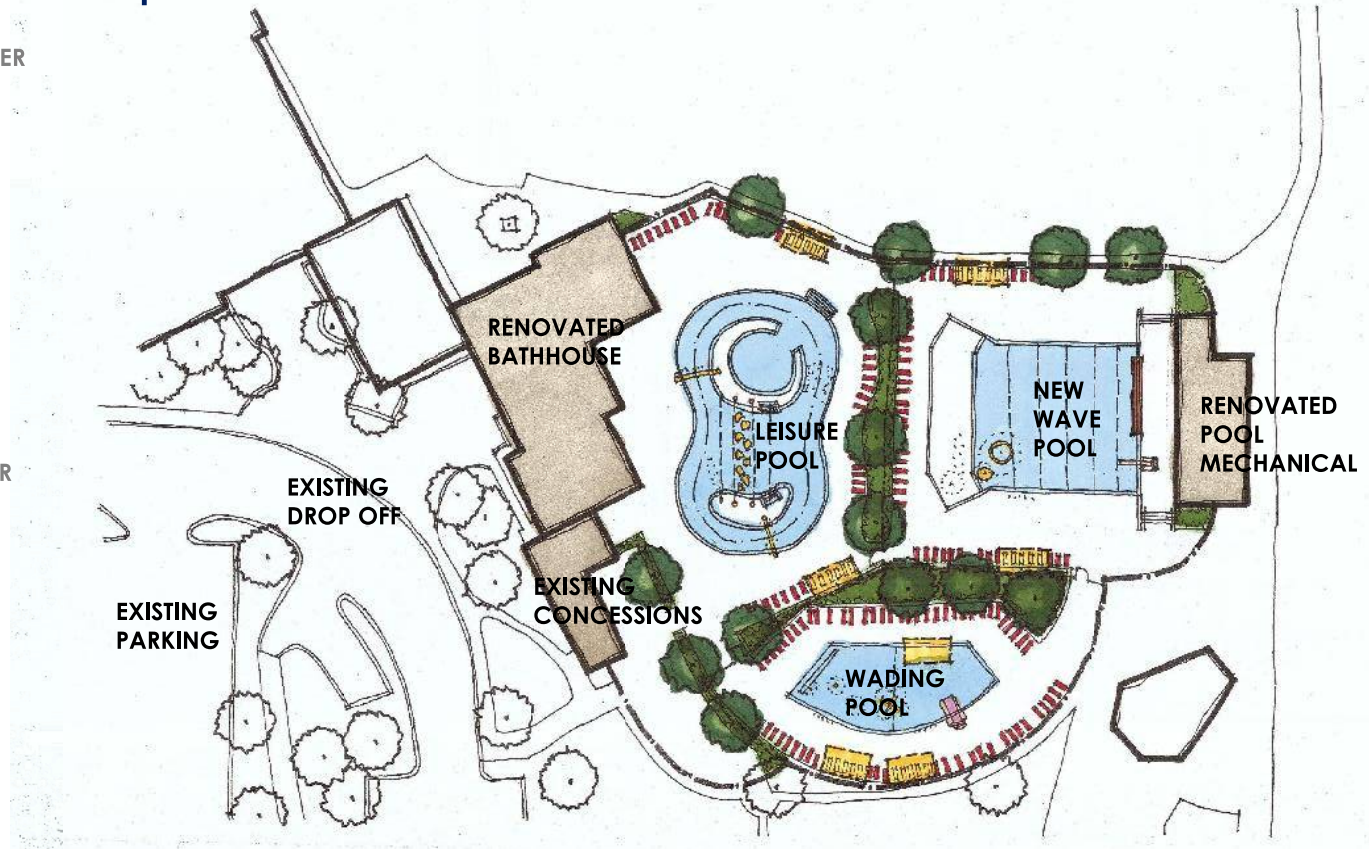
- 3' – 4' DEEP WATER
- CURRENT CHANNEL
- ACTIVE WATER / SPRAY FEATURES
- VORTEX POOL
- WATER WALK

### WADING POOL AMENITIES:

- ZERO-DEPTH ENTRY TO 2' DEEP WATER
- ACTIVE WATER PLAY AREAS
- TOT WATER SLIDE
- PASSIVE WATER AREA
- SHADE

### CONCESSIONS AMENITIES:

- DESIGNATED CONCESSIONS DECK





# Leisure Pool Amenities

**LEISURE POOL AMENITIES:**

- 3' – 4' DEEP WATER
- CURRENT CHANNEL
- ACTIVE WATER / SPRAY FEATURES
- VORTEX POOL
- WATER WALK



WATER WALK



ACTIVE WATER



CURRENT CHANNEL



VORTEX POOL

FGM ARCHITECTS

COUNSLMAN • HUNSAKER  
The Ultimate Aquatic Advantage

# Concept Plan – OPTION D.2

## PRELIMINARY BUDGET \$8.4 million

### NEW WAVE POOL AMENITIES:

- ZERO-DEPTH ENTRY TO 10' DEEP WATER
- 1M DIVING BOARD
- CLIMBING WALL
- ACTIVE WATER / SPRAY FEATURES
- SHADE

### LEISURE POOL AMENITIES:

- 3' – 4' DEEP WATER
- CURRENT CHANNEL
- ACTIVE WATER / SPRAY FEATURES
- VORTEX POOL
- WATER WALK

### WADING POOL AMENITIES:

- ZERO-DEPTH ENTRY TO 2' DEEP WATER
- ACTIVE WATER PLAY AREAS
- TOT WATER SLIDE
- PASSIVE WATER AREA
- SHADE

### DIVE POOL AMENITIES:

- 1M DIVING BOARD
- 3M DIVING BOARD
- DROP SLIDE

### CONCESSIONS AMENITIES:

- DESIGNATED CONCESSIONS DECK





# Concept Plan – OPTION E

## PRELIMINARY BUDGET \$7.4 million

### RENOVATED WAVE POOL AMENITIES:

- ZERO-DEPTH ENTRY TO 10' DEEP WATER
- 1M DIVING BOARD
- CLIMBING WALL
- ACTIVE WATER / SPRAY FEATURES
- SHADE

### WADING POOL AMENITIES:

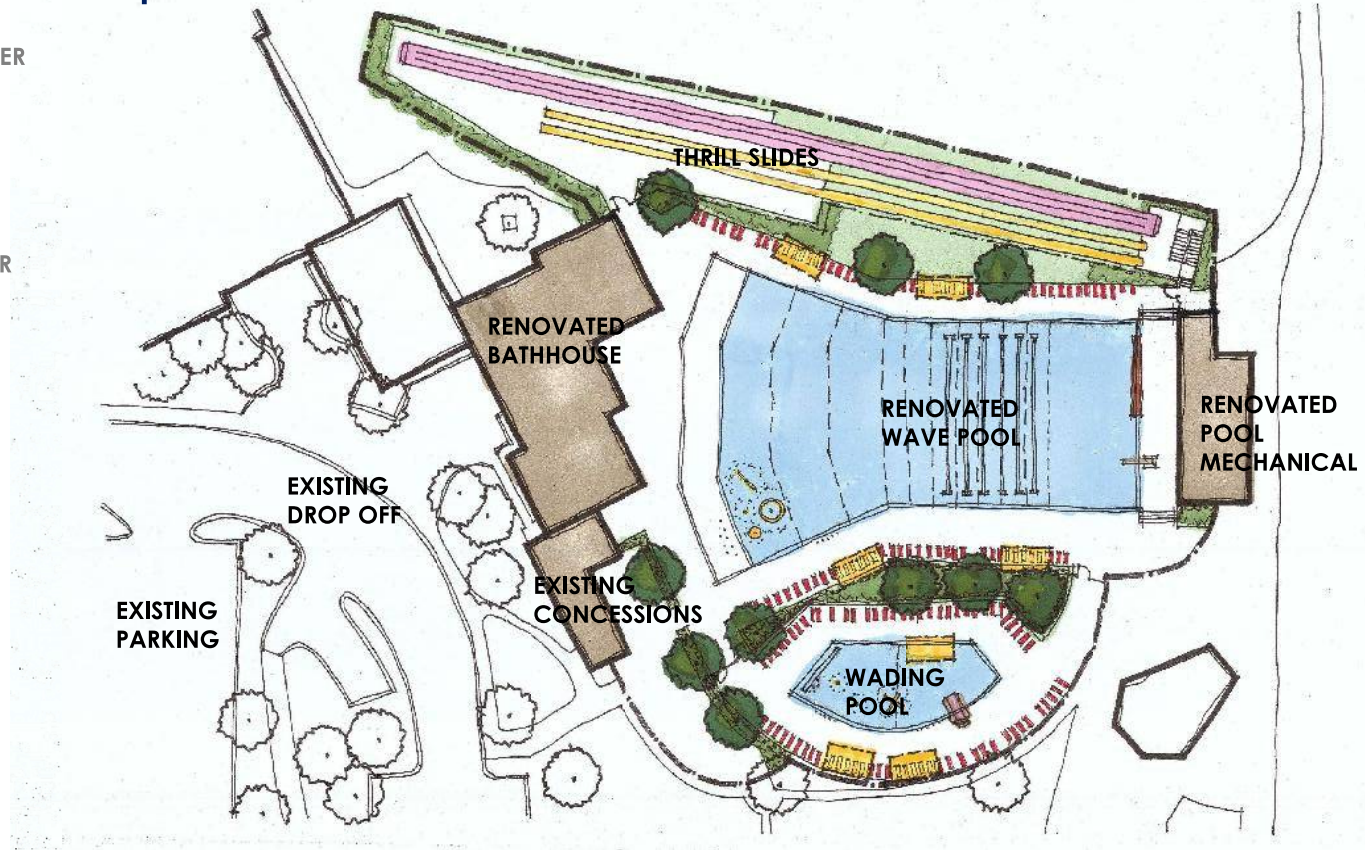
- ZERO-DEPTH ENTRY TO 2' DEEP WATER
- ACTIVE WATER PLAY AREAS
- TOT WATER SLIDE
- PASSIVE WATER AREA
- SHADE

### THRILL SLIDES AMENITIES:

- 45 FT PLATFORM
- MAT RACERS
- SPEED SLIDES

### CONCESSIONS AMENITIES:

- DESIGNATED CONCESSIONS DECK



## ACTIVITY POOL with AQUAPLAY FEATURE



- ACTIVITY POOL AMENITIES:**
- ZERO-DEPTH ENTRY TO 2' DEEP WATER
  - ACTIVE WATER PLAY AREAS
  - AQUAPLAY 1050T (70+ FEATURES)
  - PASSIVE WATER AREA
  - SHADE



# Concept Plan – OPTION E+

## PRELIMINARY BUDGET \$8.3 million

### RENOVATED WAVE POOL AMENITIES:

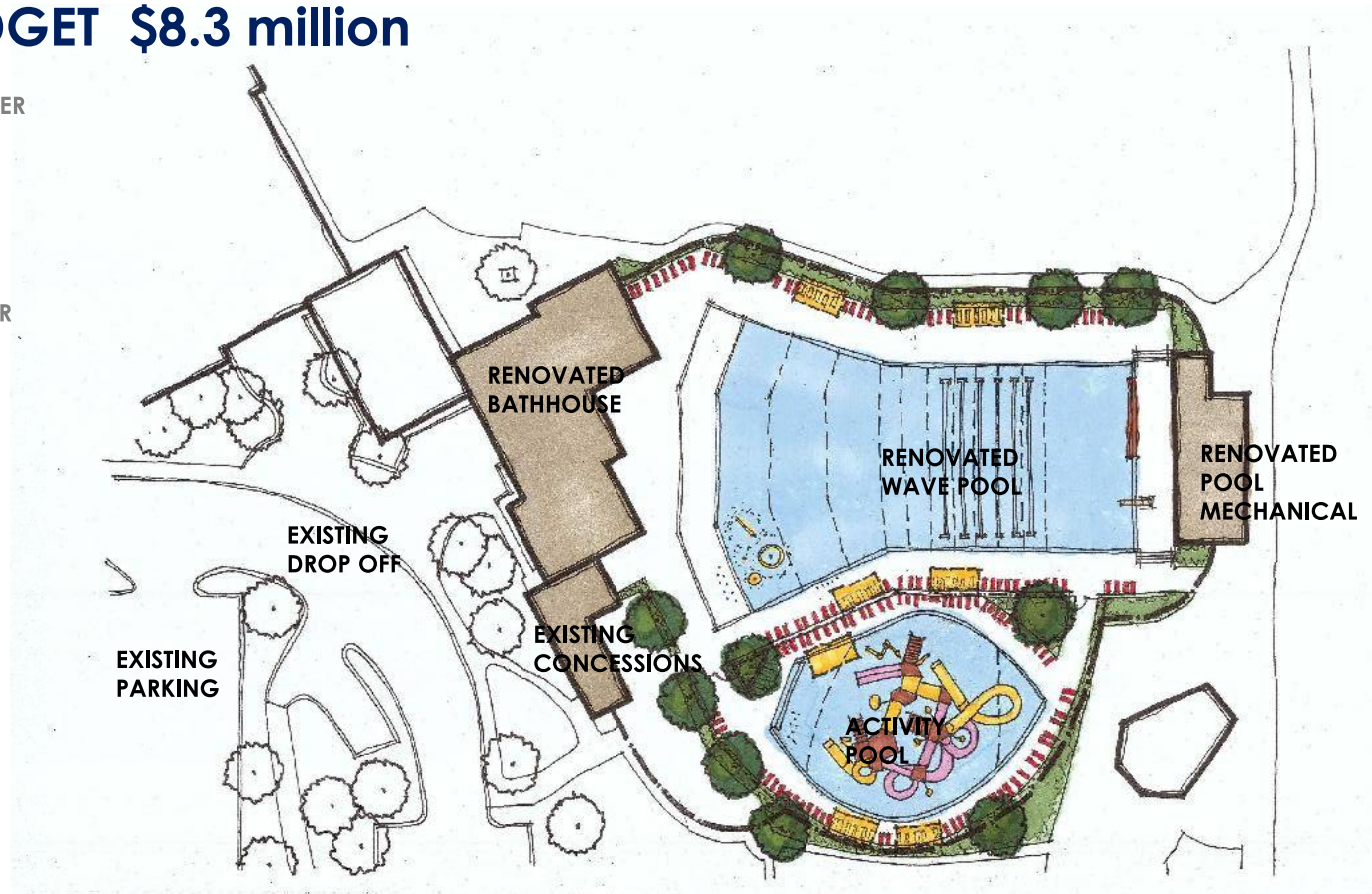
- ZERO-DEPTH ENTRY TO 10' DEEP WATER
- 1M DIVING BOARD
- CLIMBING WALL
- ACTIVE WATER / SPRAY FEATURES
- SHADE

### ACTIVITY POOL AMENITIES:

- ZERO-DEPTH ENTRY TO 2' DEEP WATER
- ACTIVE WATER PLAY AREAS
- AQUAPLAY 1050T (70+ FEATURES)
- PASSIVE WATER AREA
- SHADE

### CONCESSIONS AMENITIES:

- DESIGNATED CONCESSIONS DECK



## PRELIMINARY BUDGET \$9.6 million

### RENOVATED WAVE POOL AMENITIES:

- ZERO-DEPTH ENTRY TO 10' DEEP WATER
- 1M DIVING BOARD
- CLIMBING WALL
- ACTIVE WATER / SPRAY FEATURES
- SHADE

### ACTIVITY POOL AMENITIES:

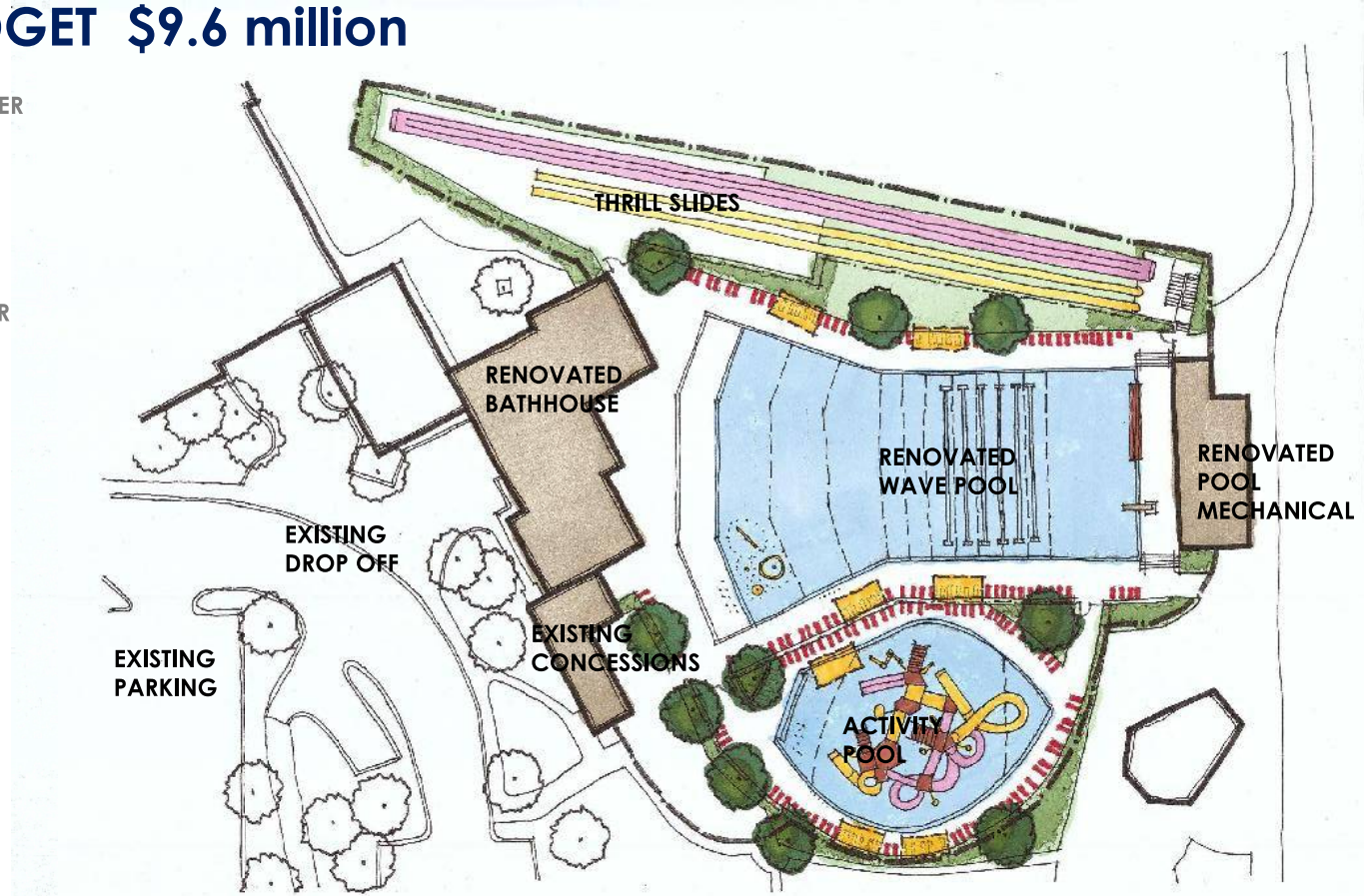
- ZERO-DEPTH ENTRY TO 2' DEEP WATER
- ACTIVE WATER PLAY AREAS
- AQUAPLAY 1050T (70+ FEATURES)
- PASSIVE WATER AREA
- SHADE

### THRILL SLIDES AMENITIES:

- 45 FT PLATFORM
- MAT RACERS
- SPEED SLIDES

### CONCESSIONS AMENITIES:

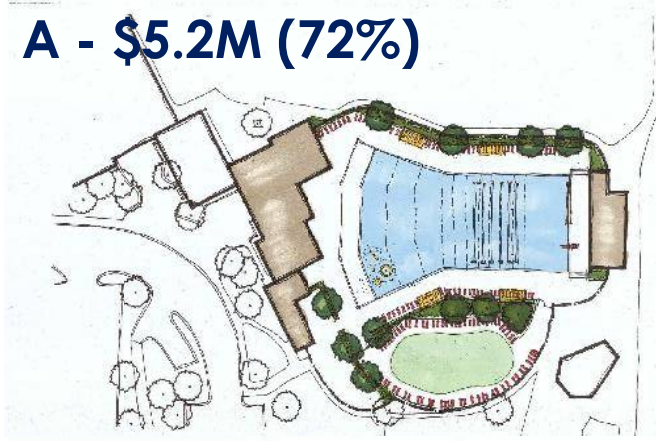
- DESIGNATED CONCESSIONS DECK





# Concept Plan(s) – SUMMARY

**A - \$5.2M (72%)**



**B - \$6.0M (69%)**



**B+ - \$7.1M (64%)**



**D.1 - \$7.3M (65%)**

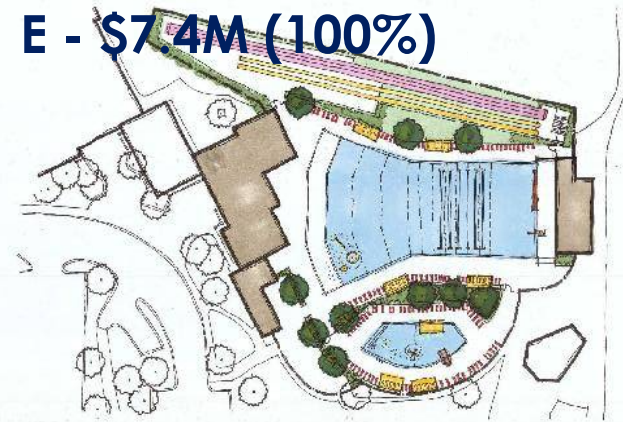


# Concept Plan(s) – SUMMARY

**D.2 - \$8.4M (78%)**



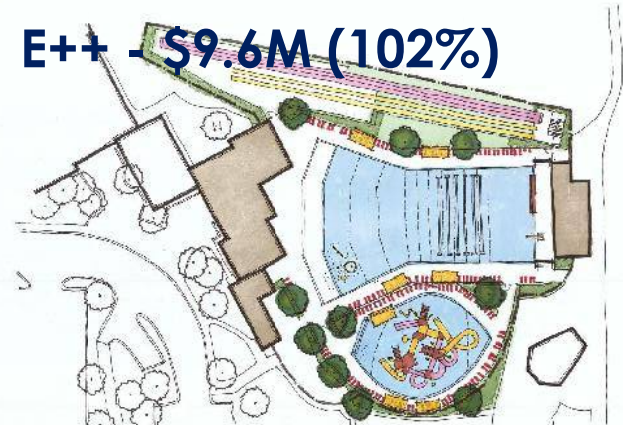
**E - \$7.4M (100%)**



**E+ - \$8.3M (98%)**



**E++ - \$9.6M (102%)**



## **NEW BUSINESS SUMMARY MAY 2016**

---

### **A. Clearwater & WeGo Playground Design Approval**

#### **• (Discussion & Potential Action)**

We held a drop-in meeting on May 12 to gather resident input for Clearwater & WeGo playground design/equipment. The majority of those in attendance were interested in and commented on the WeGo project.

Included with the packet is the recommended option for playground design/equipment for each of these parks based on budgeted funds, available space for the new equipment, input from the public, and staff review. Assuming the Board is comfortable with this playground design/equipment, our goal is to continue following the timeline below:

- May 27 – Permit Set submitted to Village of Mount Prospect
- June 17 - Final Cost Estimate and plan review by the Park District
- June 23 – Advertise for Bids – Plans available to contractors
- July 6 – Pre-bid meeting on site – 10:00 am
- July 14 – Bid Opening – 10:00 am at Community Center
- July 20 – Recommendation Letter and bid review to Park District
- July 27 – Board Meeting and Bid Approval**
- August 12 – Notice to Proceed to Contractor
- October 14 – Substantial Completion
- October 28 – Completion**

#### **→ Donation toward renovation of Basketball Area – WeGo Park**

Staff recently met with Marta & Bruce Gillian who live next to WeGo Park. Their daughter Lindsay unexpectedly passed away in 2009, and they are planning to donate \$15,000 to the Mt. Prospect Parks Foundation toward the renovation of the basketball area at WeGo Park. Staff is reviewing options for renovating the courts which will be included in the bid specifications.

### **B. Golf Advisory Alternative • (Discussion & Potential Action)**

There has been discussion regarding re-starting Golf Advisory Committee Meetings. Staff would like to propose another alternative as described below:

Attached is a copy of a comment card with a link on our new website. This would be included on our weekly email blasts. Anyone, any time of day, can use this link/form to provide feedback, comments or ask questions. Staff would answer/address these inquiries as are done each day in the golf shop. Much like the MPPD website which also has a "contact us." The monthly Golf Board Report is also available online and we now have daily updates on the new website.

In the past, formal meetings were held, but the Golf Advisory Committee meetings posed a number of issues: People/staff could not attend on a specific date/time, attendance was mostly poor, (unless there was a major project), people felt intimidated and couldn't give opinions anonymously. But perhaps the most important flaw was that it allowed a relatively small faction of golfers to have the most input, and enact change that was more self-serving than consistent with the goals of the park district and golf course.

## **NEW BUSINESS SUMMARY**

### **MAY 2016**

---

Based on these issues in the past, staff has worked hard to shift the authority to the Board of Commissioners – many of whom already represent the majority of resident golfers. The Board of Commissioners considers a broader view of all policy which should prevent one or two segments of golfers from controlling most of the decisions affecting all of the patrons at the golf course.

Technology wise, staff believes feel the online method is a newer, fairer, faster alternative to elicit feedback, and it is what many businesses are moving to as a prime way to obtain feedback. More importantly, we can receive feedback from Chicago area golfers, national and international golfers, who account for over 70% of the fees paid at the golf course each year. This 3-1 majority has no input with a small resident only committee and is too important to exclude. Now everyone must rely more and more on online ratings from company's like Golf Advisor and Yelp which link to GolfNow and Google. Like any other industry from hotels to restaurants, these are truly the ratings and customer comments that will either make or break a golf course in this information age. The consensus of opinion should be what ultimately leads to changes in our course and/or policies and procedures.

***Staff Recommendation:***

That the Mt. Prospect Golf Course implements the use of an online comment card as a means for golfers to provide feedback/suggestions, comments or ask questions regarding the golf course and/or the current practices we follow.



# Clearwater Park - Palette A

Mt Prospect IL May 18, 2016 MTP16CLR1-1A



**Better playgrounds.  
Better world.®**

[playsi.com](http://playsi.com)



Proudly presented by:





# Clearwater Park - Palette J

Mt Prospect IL May 18, 2016 MTP16CLR1-1J



**Better playgrounds.  
Better world.®**

[playlsi.com](http://playlsi.com)

Proudly presented by:





# Clearwater Park - Palette O

Mt Prospect IL May 18, 2016 MTP16CLR1-10



**Better playgrounds.  
Better world.®**

[playlsi.com](http://playlsi.com)

Proudly presented by:





# Clearwater Park - Palette G

Mt Prospect IL May 18, 2016 MTP16CLR1-1G



**Better playgrounds.  
Better world.®**

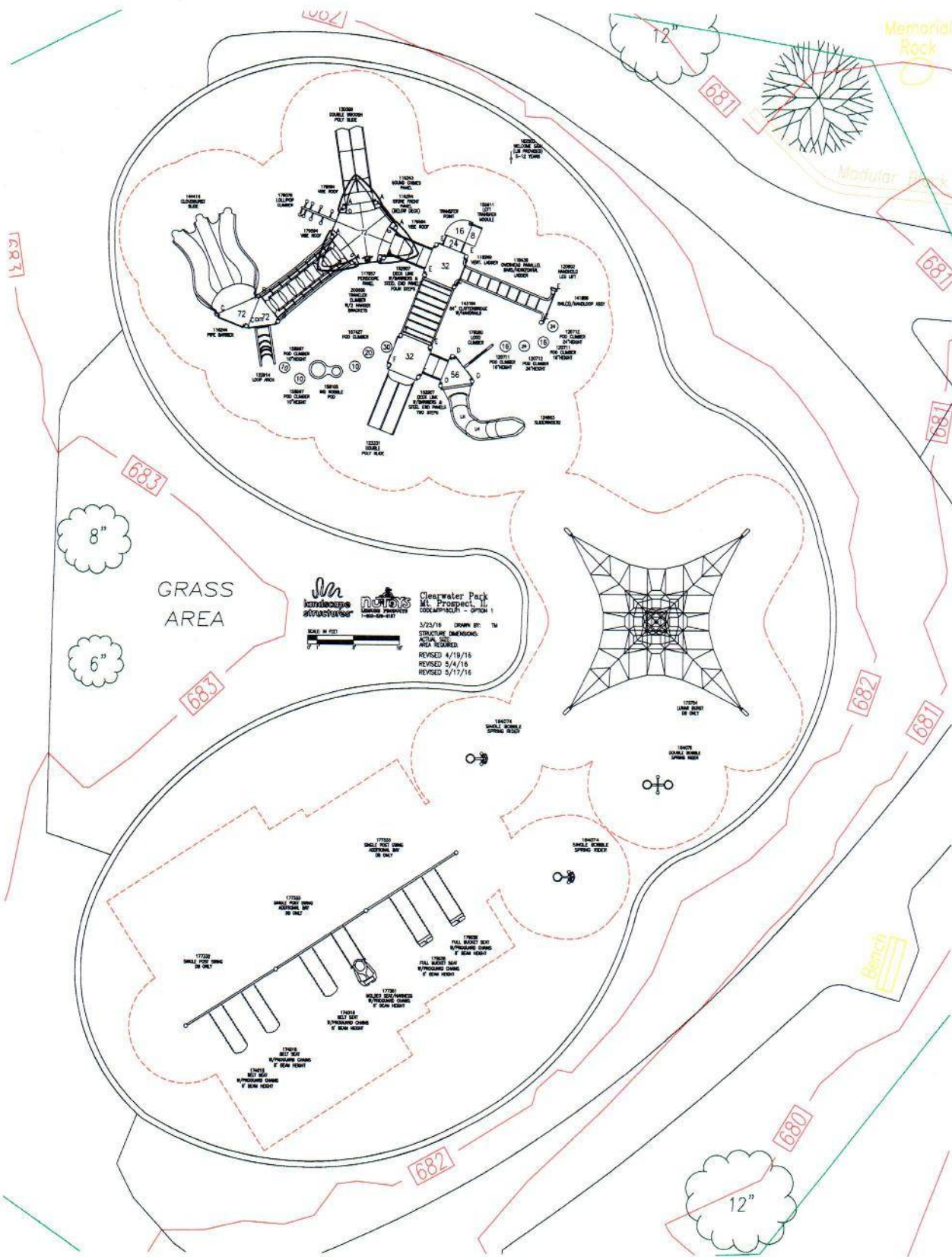
[playlsi.com](http://playlsi.com)



Proudly presented by:







# Pick your Palette

Tour through all 23 carefully Curated Palettes and discover how color can tie your whole playground together. All of our colors take a cue from nature from green trees and blue sky, to minerals, birds, spices, fruits and more to create vibrant hues that stimulate the senses and perfectly coordinate with the outdoors.

**Legend**

- 1 Posts (ProShield)
- 2 Clamps (ProShield)
- 3 Components (ProShield)
- 4 Polyethylene
- 5 Permalene
- 6 Decks (TenderTuff)

<p><b>Palette A</b></p> <ul style="list-style-type: none"> <li>1 Metallic Silver</li> <li>2 Limon</li> <li>3 Limon</li> <li>4 Denim</li> <li>5 Limon</li> <li>6 Gray</li> </ul>	<p><b>Palette B</b></p> <ul style="list-style-type: none"> <li>1 Tangerine</li> <li>2 Plum</li> <li>3 Plum</li> <li>4 Limon</li> <li>5 Limon</li> <li>6 Gray</li> </ul>	<p><b>Palette C</b></p> <ul style="list-style-type: none"> <li>1 Brown</li> <li>2 Acorn</li> <li>3 Leaf</li> <li>4 Acorn</li> <li>5 Acorn</li> <li>6 Brown</li> </ul>	<p><b>Palette D</b></p> <ul style="list-style-type: none"> <li>1 Denim</li> <li>2 Vanilla</li> <li>3 Vanilla</li> <li>4 Tangerine</li> <li>5 Denim</li> <li>6 Gray</li> </ul>	<p><b>Palette E</b></p> <ul style="list-style-type: none"> <li>1 Black</li> <li>2 Yellow</li> <li>3 Red</li> <li>4 Red</li> <li>5 Yellow</li> <li>6 Brown</li> </ul>	
<p><b>Palette F</b></p> <ul style="list-style-type: none"> <li>1 Brown</li> <li>2 Dune</li> <li>3 Acorn</li> <li>4 Acorn</li> <li>5 Acorn</li> <li>6 Brown</li> </ul>	<p><b>Palette G</b></p> <ul style="list-style-type: none"> <li>1 Limon</li> <li>2 Tangerine</li> <li>3 Tangerine</li> <li>4 Denim</li> <li>5 Denim</li> <li>6 Gray</li> </ul>	<p><b>Palette H</b></p> <ul style="list-style-type: none"> <li>1 Brown</li> <li>2 Limon</li> <li>3 Limon</li> <li>4 Leaf</li> <li>5 Limon</li> <li>6 Brown</li> </ul>	<p><b>Palette I</b></p> <ul style="list-style-type: none"> <li>1 Leaf</li> <li>2 Brown</li> <li>3 Brown</li> <li>4 Acorn</li> <li>5 Acorn</li> <li>6 Brown</li> </ul>	<p><b>Palette J</b></p> <ul style="list-style-type: none"> <li>1 Red</li> <li>2 Blue</li> <li>3 Yellow</li> <li>4 Blue</li> <li>5 Yellow</li> <li>6 Brown</li> </ul>	<p><b>Palette K</b></p> <ul style="list-style-type: none"> <li>1 Metallic Silver</li> <li>2 Denim</li> <li>3 Denim</li> <li>4 Brick</li> <li>5 Brick</li> <li>6 Gray</li> </ul>
<p><b>Palette L</b></p> <ul style="list-style-type: none"> <li>1 Vanilla</li> <li>2 Plum</li> <li>3 Plum</li> <li>4 Limon</li> <li>5 Limon</li> <li>6 Gray</li> </ul>	<p><b>Palette M</b></p> <ul style="list-style-type: none"> <li>1 Tangerine</li> <li>2 Metallic Silver</li> <li>3 Metallic Silver</li> <li>4 Limon</li> <li>5 Limon</li> <li>6 Gray</li> </ul>	<p><b>Palette N</b></p> <ul style="list-style-type: none"> <li>1 Metallic Silver</li> <li>2 Tangerine</li> <li>3 Tangerine</li> <li>4 Denim</li> <li>5 Denim</li> <li>6 Gray</li> </ul>	<p><b>Palette O</b></p> <ul style="list-style-type: none"> <li>1 Pine Green</li> <li>2 Tan</li> <li>3 Brown</li> <li>4 Tan</li> <li>5 Tan</li> <li>6 Brown</li> </ul>	<p><b>Palette P</b></p> <ul style="list-style-type: none"> <li>1 Plum</li> <li>2 Tangerine</li> <li>3 Orange</li> <li>4 Granite</li> <li>5 Tangerine</li> <li>6 Brown</li> </ul>	<p><b>Palette Q</b></p> <ul style="list-style-type: none"> <li>1 Buttercup</li> <li>2 Limon</li> <li>3 Grass</li> <li>4 Limon</li> <li>5 Leaf</li> <li>6 Gray</li> </ul>
<p><b>Palette R</b></p> <ul style="list-style-type: none"> <li>1 Sky</li> <li>2 Berry</li> <li>3 Denim</li> <li>4 Denim</li> <li>5 Gray</li> <li>6 Gray</li> </ul>	<p><b>Palette S</b></p> <ul style="list-style-type: none"> <li>1 Metallic Silver</li> <li>2 Orange</li> <li>3 Carbon</li> <li>4 Denim</li> <li>5 Gray</li> <li>6 Gray</li> </ul>	<p><b>Palette T</b></p> <ul style="list-style-type: none"> <li>1 Sky</li> <li>2 Denim</li> <li>3 Lagoon</li> <li>4 Acorn</li> <li>5 Denim</li> <li>6 Brown</li> </ul>	<p><b>Palette U</b></p> <ul style="list-style-type: none"> <li>1 Buttercup</li> <li>2 Grass</li> <li>3 Grass</li> <li>4 Acorn</li> <li>5 Acorn</li> <li>6 Brown</li> </ul>	<p><b>Palette V</b></p> <ul style="list-style-type: none"> <li>1 Lagoon</li> <li>2 Sky</li> <li>3 Tangerine</li> <li>4 Tangerine</li> <li>5 Gray</li> <li>6 Gray</li> </ul>	<p><b>Palette W</b></p> <ul style="list-style-type: none"> <li>1 Carbon</li> <li>2 Lagoon</li> <li>3 Sky</li> <li>4 Limon</li> <li>5 Gray</li> <li>6 Gray</li> </ul>





May 17, 2016



CLEARWATER PARK  
 MT PROSPECT, IL  
 OPTION 1 REVISED  
 PLAYBOOSTER

<u>QTY.</u>	<u>NO.</u>	<u>DESCRIPTION</u>	<u>UNIT PRICE</u>	<u>PRICE</u>
<b>PlayBooster Component System 5-12</b>				
1	144414A	Cloudburst Triple Slide 72"Dk DB1		\$ 3,660
1	123331A	Double Poly Slide 32"Dk DB		1,485
1	130390A	Double Swoosh Slide 72"Dk DB1		1,920
1	124863D	SlideWinder2 56"Dk DB 2 Left		2,365
1	152907D	Deck Link w/Barriers Steel end panels 4 Steps		2,690
1	176080A	Logo Climber 56"Dk DB		1,200
1	176078B	Lollipop Climber 72"Dk DB		1,200
1	122914C	Loop Arch 72"Dk DB		1,400
1	157427A	Pod Climber No Handsupports 32"Dk DB		1,085
1	200609A	Traveler Climber w/2 Hanger Brackets		7,185
1	116249A	Vertical Ladder 32"Dk DB		615
1	141886B	Access/Landing Assembly Rails Barrier Right 32"Dk		725
1	119430A	Overhead Parallel Bars/Horiz Lad Connected Between Decks		1,000
1	143194A	Clatterbridge 84 w/Guardrails		3,015
1	152907B	Deck Link w/Barriers Steel end panels 2 Steps		1,655
1	115243A	Chimes Panel Above Deck		1,205
1	117957A	Periscope Panel Above Deck		1,310
1	116244A	Pipe Barrier Above Deck		505
1	115254A	Storefront Panel		505
1	120902A	Handhold Leg Lift		170
3	179594A	Vibe Roof	\$ 1,090	3,270
1	122197A	90* Triangular Tenderdeck		700
1	152911A	Curved Transfer Module Left 32"Dk DB		1,935
1	178710A	Hexagon Tenderdeck		2,380
2	111228A	Square Tenderdeck	830	1,660
1	111231A	Triangular Tenderdeck		645
1	119646A	Tri-Deck Extension		620
4	111404F	108"Alum Post DB	250	1,000
6	111404E	116"Alum Post DB	255	1,530
3	111404C	132"Alum Post DB	295	885
2	111404A	148"Alum Post DB	315	630
2	111404L	164"Alum Post DB	380	760
6	179595O	204"Steel Post For Vibe Roof DB	395	2,370
2	158997A	Pod Climber 10" DB	235	470
2	120711A	Pod Climber 16" DB	240	480
2	120712A	Pod Climber 24" DB	245	490
1	158105A	Wobble Pod DB Only		1,240
1	182503C	Welcome Sign (LSI Provided) Ages 5-12 years Direct Bury		-
<b>SUBTOTAL</b>				<b>\$ 55,960</b>

**PAGE 2**

SWINGS:

3	174018A	Belt Seat Proguard Chains 8' Beam	\$ 105	\$ 315
2	176038A	Full Bucket Seat Proguard Chains 8' Beam	255	510
1	177351A	Molded Bucket Seat (5-12 yrs) w/Harness Proguard Chains 8' Beam		690
1	177332A	Single Post Swing Frame 8' Beam		1,085
2	177333A	Single Post Swing Frame Addtl Bay 8' Beam	815	1,630
		SUBTOTAL		<u>\$ 4,230</u>

ALSO:

1	173754A	Lunar Burst DB Only <sup>1</sup>		\$ 16,965
1	164075B	Double Bobble Rider DB		1,675
2	164074B	Single Bobble Rider DB	\$ 970	1,940
		SUBTOTAL		<u>\$ 20,580</u>

EQUIPMENT TOTAL	\$ 80,770
SPECIAL DISCOUNT	(3,231)
SHIPPING	2,060
TOTAL	<u>\$ 79,599</u>





May 17, 2016



CLEARWATER PARK  
MT PROSPECT, IL  
OPTION 1 REVISED

**ADA GUIDE LINES: 5-12 STRUCTURE**  
TOTAL ELEVATED PLAYSTRUCTURE COMPONENTS - 13

	<b>PROVIDED</b>	<b>REQUIRED</b>
PLAYSTRUCTURE COMPONENTS ACCESSIBLE VIA RAMP	N/A	N/A
PLAYSTRUCTURE COMPONENTS ACCESSIBLE VIA TRANSFER	11	7
GROUND LEVEL EVENTS	9	4
GROUND LEVEL TYPES	7	3

**85% ARE ACCESSIBLE VIA THE TRANSFER STATIONS**

# We-Go Park - Palette I

Mt Prospect IL May 18, 2016 MTP16WEG2-2I



**Better playgrounds.  
Better world.®**

[playlsi.com](http://playlsi.com)



Proudly presented by:





# We-Go Park

Mt Prospect IL May 18, 2016 MTP16WEG2-1



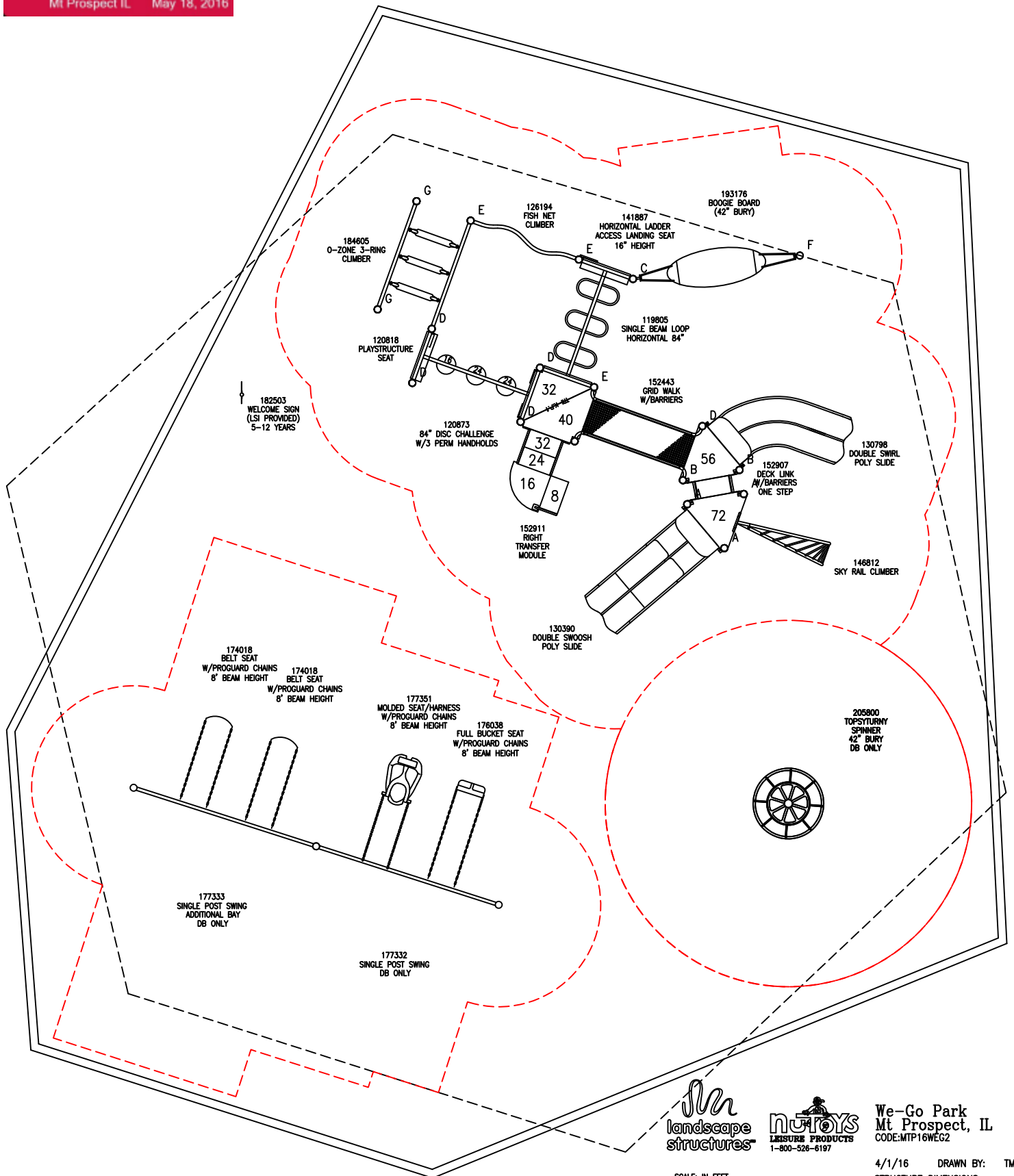
**Better playgrounds.  
Better world.®**

[playlsi.com](http://playlsi.com)

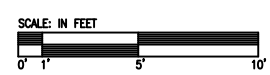


Proudly presented by:





We-Go Park  
Mt Prospect, IL  
CODE: MTP16WEC2



4/1/16 DRAWN BY: TM  
STRUCTURE DIMENSIONS:  
ACTUAL SIZE:  
AREA REQUIRED:  
REVISED 4/19/16  
REVISED 5/17/16

We-Go Park -

Mt Prospect IL May 18, 2016



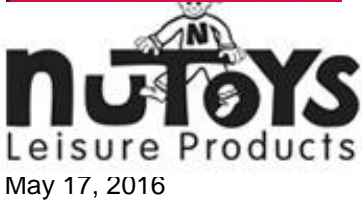
May 17, 2016



WE-GO PARK  
MT PROSPECT, IL  
OPTION 2 REVISED  
PLAYBOOSTER

<u>QTY.</u>	<u>NO.</u>	<u>DESCRIPTION</u>	<u>UNIT PRICE</u>	<u>PRICE</u>
<b>PlayBooster Component System 5-12</b>				
1	130798A	Double Swirl Poly Slide 56"Dk DB		\$ 1,835
1	130390A	Double Swoosh Slide 72"Dk DB1		1,920
1	152907A	Deck Link w/Barriers Steel end panels 1 Step		1,125
1	184605A	O-Zone 3-Ring Climber Ground to Ground DB		3,905
1	126194A	Fish Net DB		2,380
1	146812A	Sky Rail Climber 72"Dk DB		1,325
1	141887B	Access/Landing Assembly Seat Barrier Left 16"Dk		495
1	119805A	Single Beam Loop Horiz Lad 84"Connected Between Decks		850
1	120873B	84"Disc Challenge w/Handhold Panels 16"Deck Diff Attached To 16"Dk DB		2,430
1	152443A	Grid Walk w/Barriers		2,825
1	193176A	Boogie Board DB Only		1,765
1	120818A	Playstructure Seat		310
2	122197A	90* Triangular Tenderdeck	\$ 700	1,400
1	152911B	Curved Transfer Module Right 40"Dk DB		2,240
2	111231A	Triangular Tenderdeck	645	1,290
1	121949A	Tri-Deck Kick Plate 8"Rise		130
4	111404E	116"Alum Post DB	255	1,020
1	111404P	124"Steel Post DB 42" BURY		245
5	111404C	132"Alum Post DB	295	1,475
2	111404B	140"Alum Post DB	300	600
3	111404A	148"Alum Post DB	315	945
2	111404H	92"Alum Post DB	235	470
1	182503C	Welcome Sign (LSI Provided) Ages 5-12 years Direct Bury		-
SUBTOTAL				\$ 30,980
ALSO:				
1	205800A	TopsyTurny Spinner 42"Bury DB Only1		4,010
SWINGS:				
2	174018A	Belt Seat Proguard Chains 8' Beam	\$ 105	\$ 210
1	176038A	Full Bucket Seat Proguard Chains 8' Beam		255
1	177351A	Molded Bucket Seat (5-12 yrs) w/Harness Proguard Chains 8' Beam		690
1	177332A	Single Post Swing Frame 8' Beam		1,085
1	177333A	Single Post Swing Frame Addtl Bay 8' Beam		815
SUBTOTAL				\$ 3,055
EQUIPMENT TOTAL				\$ 38,045
SPECIAL DISCOUNT				(1,522)
SHIPPING				1,904
TOTAL				\$ 38,427

MTP16WEG2-CG/TM



WE-GO PARK  
 MT PROSPECT, IL  
 OPTION 2 REVISED

**ADA GUIDE LINES: 5-12 STRUCTURE**  
 TOTAL ELEVATED PLAYSTRUCTURE COMPONENTS - 5

	PROVIDED	REQUIRED
PLAYSTRUCTURE COMPONENTS ACCESSIBLE VIA RAMP	N/A	N/A
PLAYSTRUCTURE COMPONENTS ACCESSIBLE VIA TRANSFER	5	3
GROUND LEVEL EVENTS	5	2
GROUND LEVEL TYPES	5	2

**100% ARE ACCESSIBLE VIA THE TRANSFER STATIONS**