



Welcome Parents and Guardians!

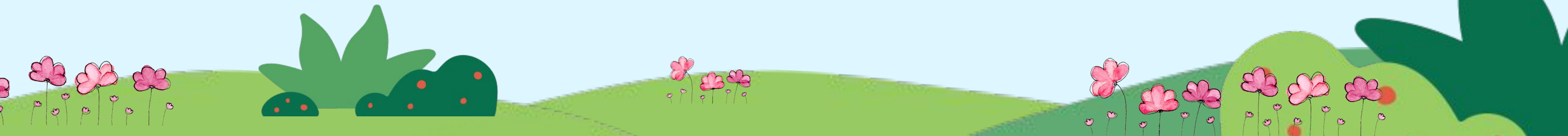
Summer 2025 Parent Meeting

Please grab the handouts and take a
seat



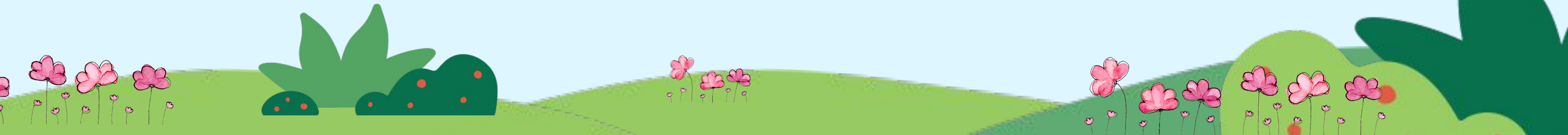
Introductions

- Kristina Winans
- Emily Jarosz
- Claire Wurtz
- Amy Heinrichs
- Amanda Frost-Frakes
- Camp Directors



Tonight's Training Will Include Information About:

- Administrative Reminders
- Drop Off / Pick Up
- General Camp Day
- Swimming
- Field Trips
- Medical/Behavioral Concerns
- Contact Information
- Questions & Concerns

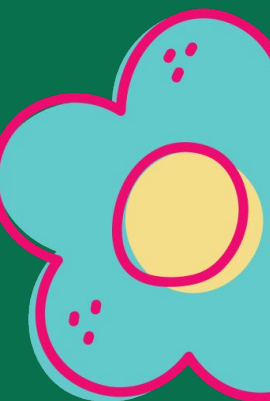
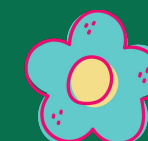
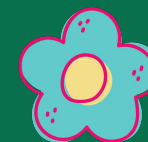
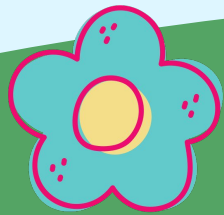




Administrative

Reminders

- Weekly Registration System
- Campers do NOT automatically enroll from one week to the next.
 - Registration closes 2 weeks prior
- NO CAMP Thursday July 3rd and Friday July 4th (all campers are M/T/W this week!)
- If you see “waitlist” make sure to checkout/finalize your purchase or you will NOT be officially on the waitlist.



Parent Handbook – page 3

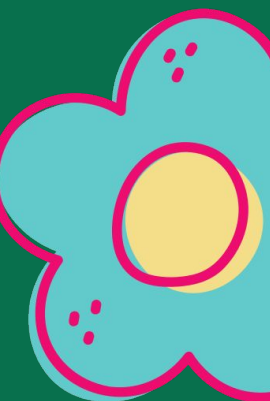
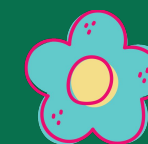
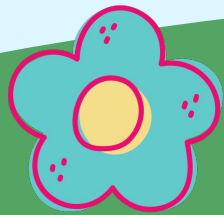
Camp Week of	Register By: *This is the very last day to register, if spots are available. All spots may be filled before this deadline*	Cancellation / Refund / Credit deadline *Date listed, by 12:00 noon
June 3-6	May 12, 2025	May 16, 2025
June 9 - 13	May 19, 2025	May 23, 2025
June 16 - 20	May 26, 2025	May 30, 2025
June 23-27	June 2, 2025	June 6, 2025
June 30 - July 2	June 9, 2025	June 13, 2025
July 7 - 11	June 16, 2025	June 20, 2025
July 14 - 18	June 23, 2025	June 27, 2025
July 21 - 25	June 30, 3035	July 4, 2025
July 28 - August 1	July 7, 2025	July 11, 2025
August 4-8	July 14, 2025	July 18, 2025



Weekly Calendars /

Schedules

- ★ Weekly emails from Kristina Winans will be sent regarding the upcoming week
 - ★ Calendars will list themes and daily camp activities
 - ★ Field trip location & information are listed
- ★ Camp-specific contact information is included on each calendar
- ★ Options include M-F or MWF. NO day switching (even if something comes up during the summer!)

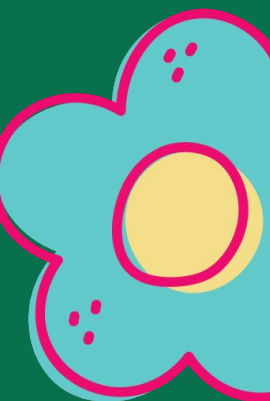
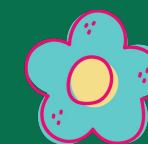
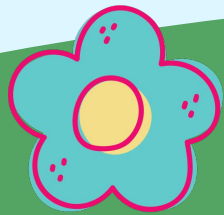




Other Registration Reminders

There will be no refunds or make up days for days absent.

If you register your camper(s) for swim lessons, dance, etc. that fall during camp hours, please send a copy of your receipt to Kristina. Please note this a request. If we are able to accommodate, camp staff will walk your camper to and from the lesson, but will not stay with them during the lesson.



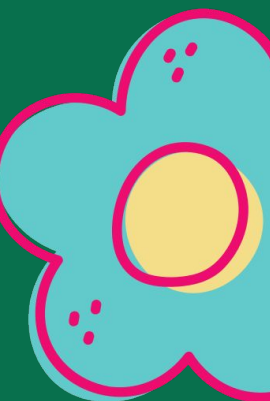
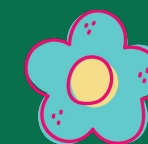
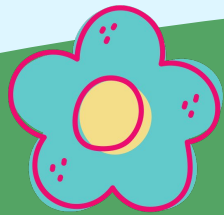


ePACT – New! Summer 2025

<https://www.mppd.org/wp-content/uploads/2025/01/Using-ePACT-for-Families-1-1-1.pdf>

The Mt. Prospect Park District's Childcare programs will be utilizing a new platform called ePACT. Overall, ePACT is a cloud based, Emergency Health Record, automation platform, which is HIPAA compliant. Health/allergy/medication forms, waivers, authorized pick up information, sign in/out, will all be done now using ePACT.

Staff will carry Park District issued devices such as iPhones and/or iPads, in order to ensure access to critical information anywhere and any time during camp hours.



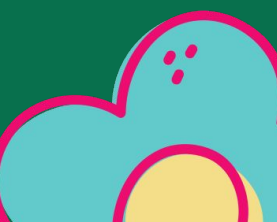
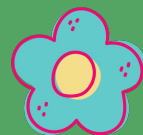
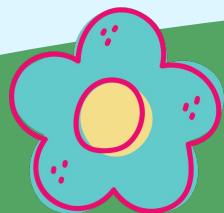
ePACT Continued

Parent/Guardian Responsibility:

- Register for camp online through the Mt. Prospect Park District Webstore
- A month or two before camp begins, those who are registered will receive an ePACT invite
- Accept the invite and create your free account. Or, login if you have an existing ePACT account
- Fill out the form (per camper) and submit
- This form is then populated on the ePACT dashboard for staff to utilize
- ALL INFORMATION MUST BE COMPLETED BEFORE THE CHILD CAN BEGIN PARTICIPATION! Staff will deny entry into the program without the ePACT documents being completed in their entirety
- Please note: You are now responsible for making updates within ePACT at any time. We no longer have paper forms and staff can only view a child's emergency information via this software. (For those returning, this is replacing the Additional Questions in the Webstore. If at any time you need up update / check authorized pick up, life jacket status, etc, you will now do fully on your own using ePACT). Staff will not be accepting verbal, written, or emailed information. You MUST update ePACT!
- There will also no longer be paper sign in and out sheets, and everything will be electronic. All those who are dropping off and picking up, must be listed in your account. There will be drop down menus and those listed will be the only ones to choose from.

Daily Drop Off / Pick Up

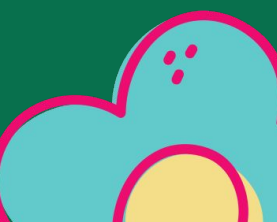
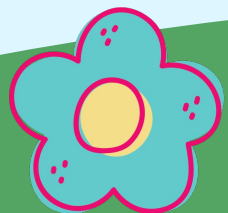
- All campers can be dropped off anytime between 7:30 am - 9am.
- Camp Rise: 9:00-1:00 only. There are no early/late hours available
- Drop off locations vary by camp.
- Campers must be signed in by an adult / authorized individual
- All campers can be picked up anytime between 3:30 - 4 pm.
- Pick up locations also vary by camp / day depending on where we swim
- Must bring ID for pick up.
- Only those on authorized pick up will be able to pick up.
- Please update ePACT ahead if someone else will be picking up.
- Late pick up fee is \$1 a minute.
- Siblings: RecPlex & Lions- pick up from Lions first



Drop off / Pick Up

Continued

- Park in a parking spot and walk your child into the building. Do not park in the fire lanes! Same applies for 6:00 pick up.
- 4:00 pick up is curbside - stay in your car and staff will greet you there, you will sign out, and they will bring your camper(s) to you.



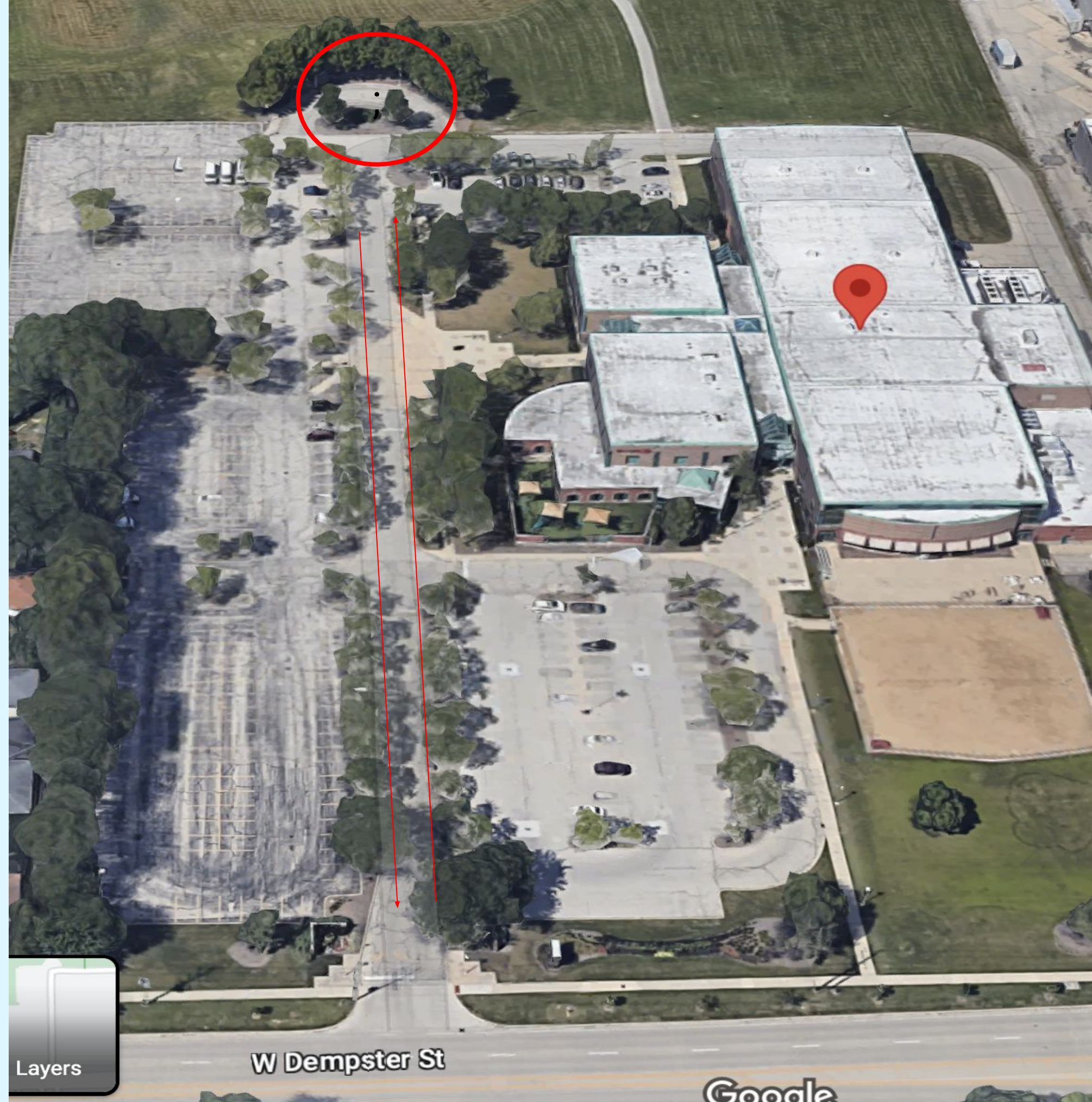
Elevate -
4:00 pick up

Near the
playground



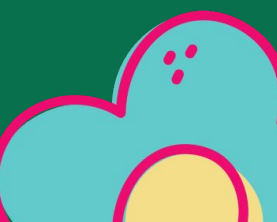
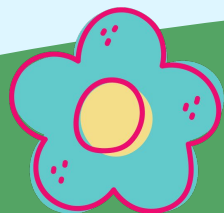
Summit - 4:00
pick up (non
swim days)

Near the back
of the parking
lot



Extended Care

- All extended care pick up will be in the Kids Klub Room at RecPlex (Camp Elevate Room).
- Extended Care pick up time: 4 pm - 6pm
- ID is required for pick up.
- Only those on authorized pick up will be able to pick up.



Parent Handbook – Page 5

Pick Up Procedures:

Camp Rise: M/T/TH/F - Pick up at RecPlex (inside at classroom - Playtime Express)

Camp Rise: Wednesdays - Pick up at Lions Rec Center (in the event of inclement weather, and we do not swim, there will be a regular day at RecPlex, including drop off/pick up at RecPlex.)

Camp Elevate: M-F 4:00 campers- Pick up at RecPlex

Camp Elevate: M-F 6:00 campers - Pick up at RecPlex

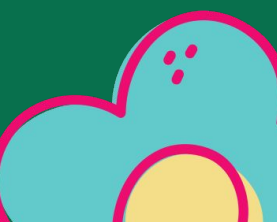
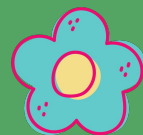
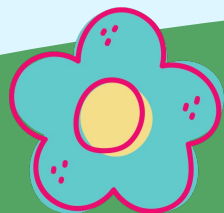
Camp Summit: T & F 4:00 campers - Pick up at RecPlex

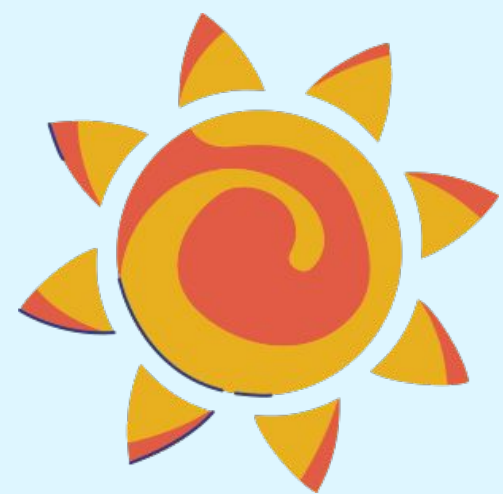
Camp Summit: M/W/TH 4:00 campers - Pick up at Lions Rec Center (in the event of inclement weather, and we do not swim, there will be a regular day at RecPlex, including drop off/pick up at RecPlex)

Camp Summit: M-F 6:00 campers - Pick up at RecPlex

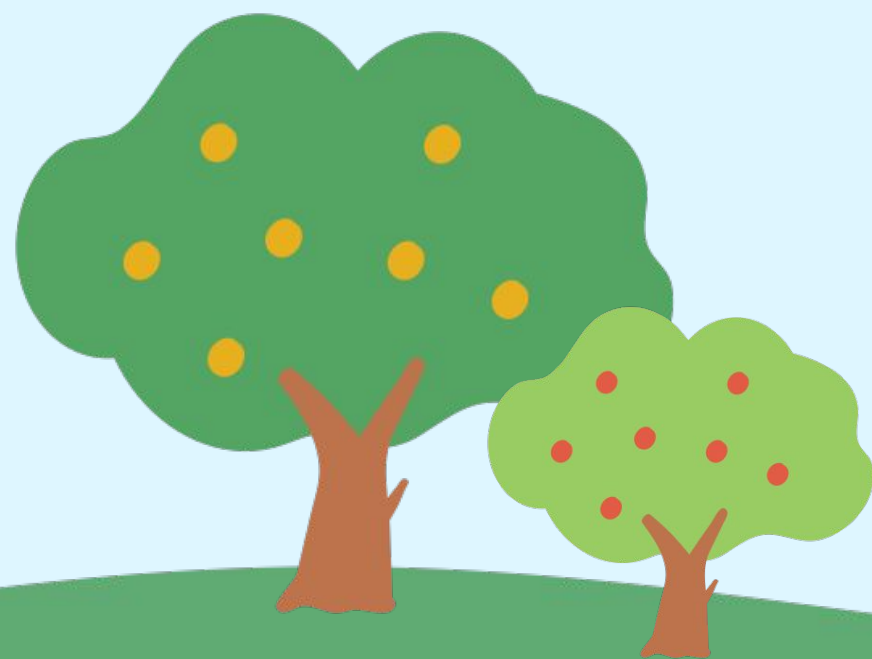
Camp Quest: M-F 4:00 campers - Pick up at Lions Rec Center

Camp Quest: M-F 6:00 campers - Pick up at RecPlex (campers will be transported from Lions Rec to RecPlex via MPPD vehicles, around 3:30 PM).





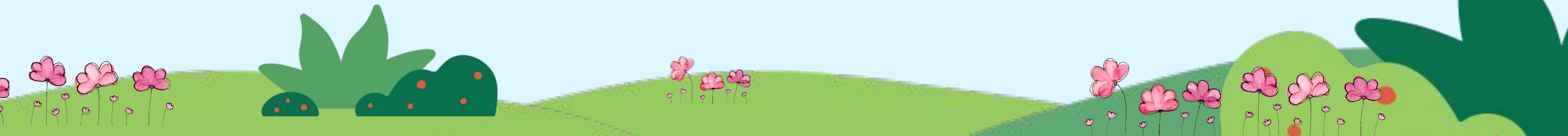
General Camp Day Information



What to Bring Each Day

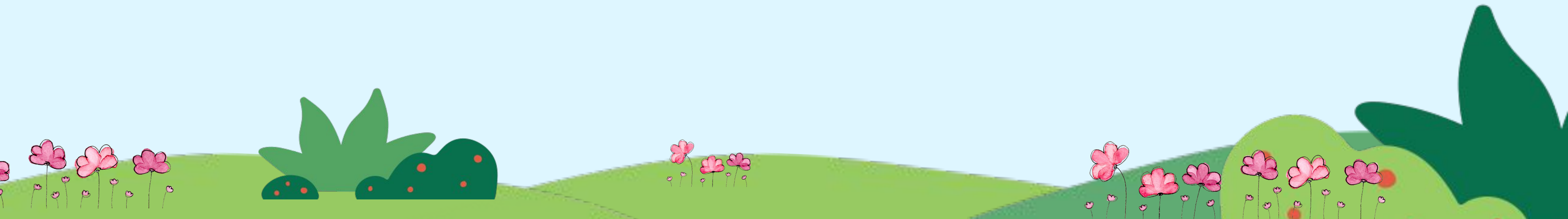
LABELED:

- Backpack
- Lunch
- Snack (2 snacks for those in extended care)
- Water
- Sunscreen
- Swimsuit / Towel
- *NO toys or electronics from home please. The MPPD is not responsible for lost or stolen items.
- Check calendar for weekly themes / dress up days!



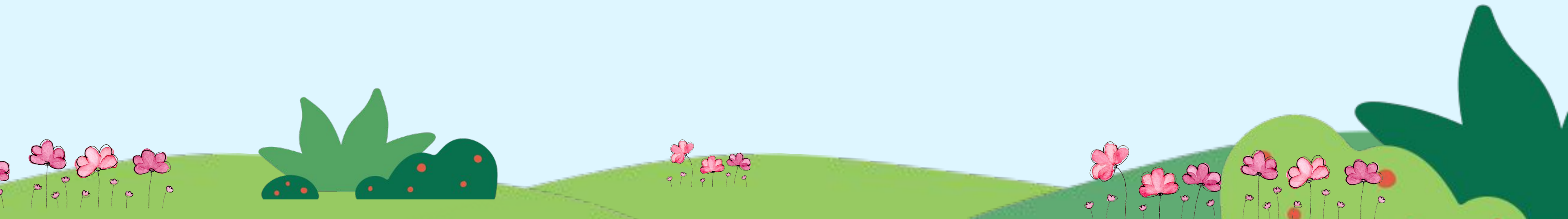
Counselor Groups

- Campers are put into a new group each week
- Groups travel throughout the day together
- This helps them get to know each other
- Their counselor will be informed of any camper-specific needs



Morning Routines

- Arrive & put belongings away
- Various activities upon arrival until stations begin
- Rotation Stations - 3 each day
 - Mix of games and crafts in all camps
 - Time for snack built into stations
- Lunch around 12 each day



Afternoon Rotations (Elevate, Summit, Quest)

- Afternoons consist of swimming or additional rotations
 - Dependent on the day of the week and the camp
- Check weekly calendar for guidance

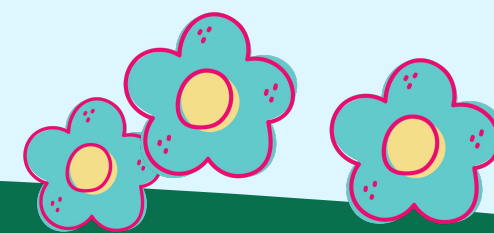
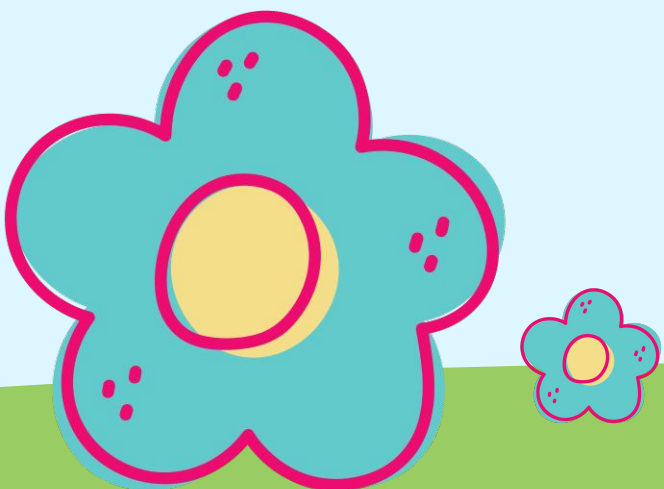




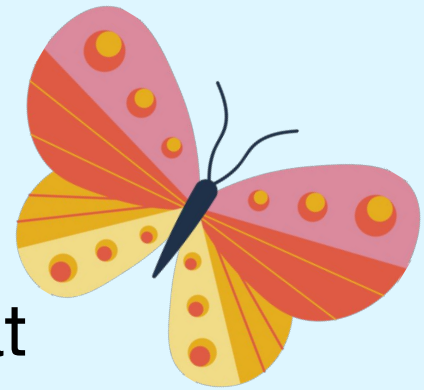
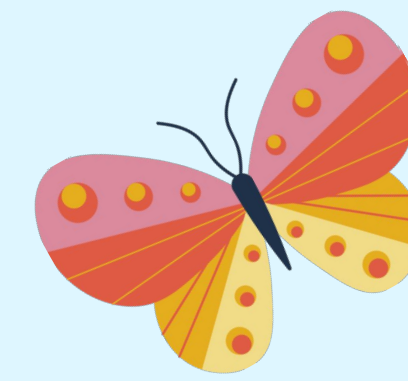
Swimming!

- Swim Testing
- Life Jackets
- Sunscreen
- Schedule

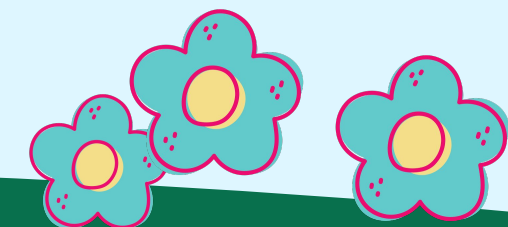
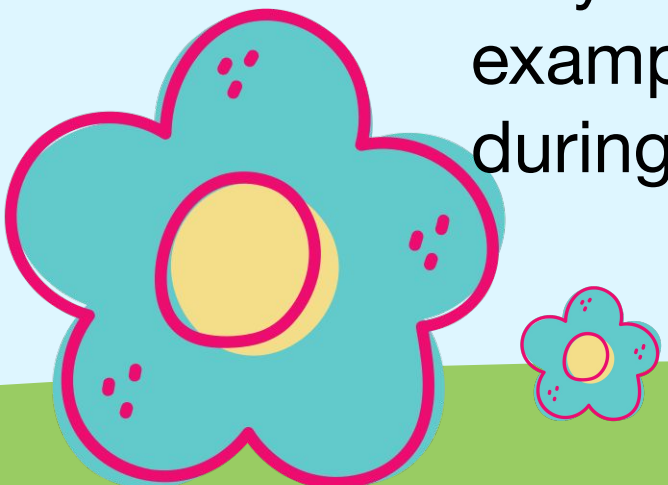
***Note: If your child does not want to swim, there will be minor / alternate activities (one staff rotates out of the water)**



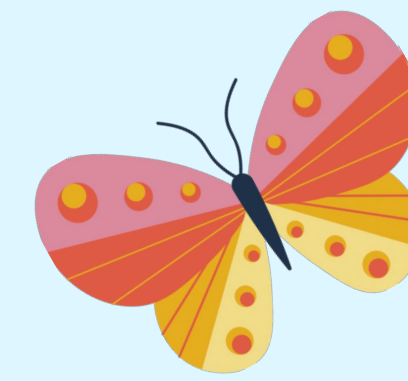
Swim Testing



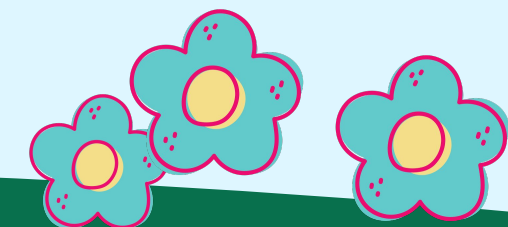
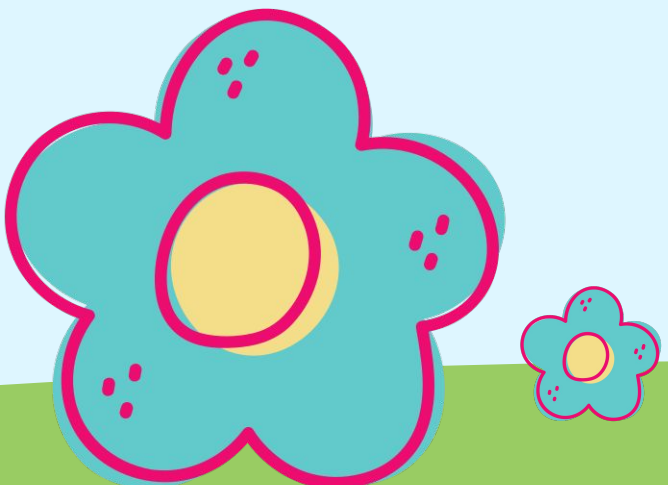
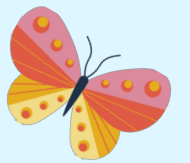
- Camp Summit & Quest campers must take a swim test if they wish to cross the red line (at 3' 3"). If your child(ren) is in Camp Rise or Elevate, they will not be able to take the test. We will use the "armpit rule" for these age groups.
- Campers will test with the Camp Directors and/or Pool Managers.
- The swim test consists of: Swimming 1 length of the pool, freestyle, with rotary breathing. There are no exceptions to this.
- If your camper has passed in previous summers and/or is on the Swim Team and/or Swim Lessons, they must test again this summer.
- Those who pass the swim test will receive a green wristband. At any time during the summer, a wristband can be removed if the safety of the camper deems necessary.
- Campers can test up to 2 times per summer. Parents may not question the decision of a swim test. If a camper fails, camp staff will do their best to inform you of the reason why they did not pass. Please be patient if you do not hear back from camp staff right away (for example, after care staff would not have access to swim test information that occurred during the daytime hours).



Life Jackets

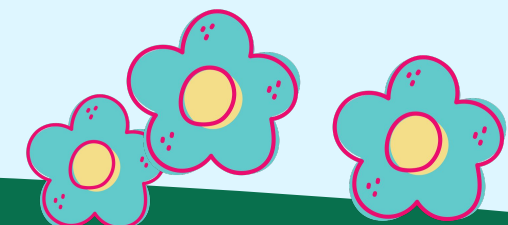
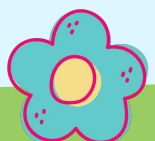
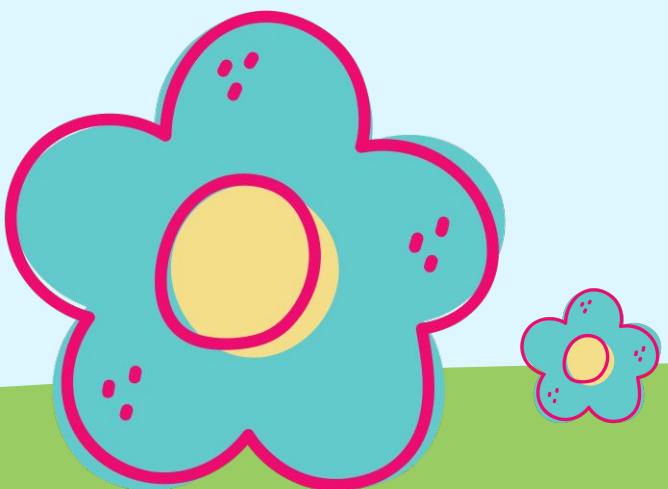
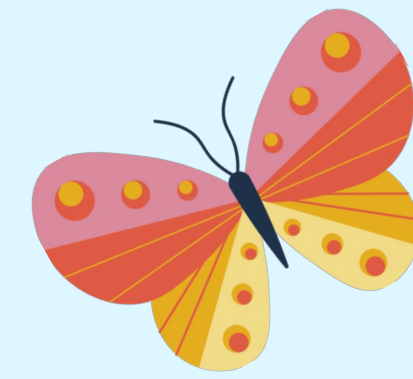


- On your camper's ePACT portal, you will note if you want your camper to wear a life jacket.
- Please keep in mind that Camp staff and Pool staff have the ability to put campers in a life jacket if they think it would benefit the safety of the camper.
- Life jackets/puddle jumpers will be issued by MPPD.
- If you would like to bring your own you may, please make sure the inside of the jacket states "US COAST GUARD APPROVED." Staff will be checking personal life jackets for this text. Camp staff are not responsible for keeping track of personal life jackets.

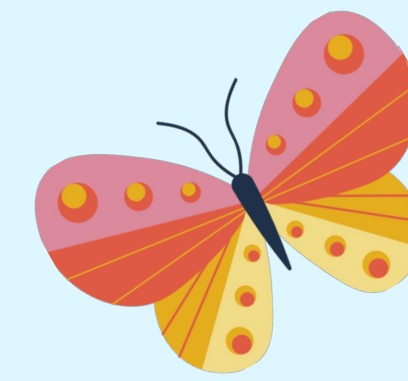


Sunscreen

- The Mt. Prospect Park District does not provide sunscreen, nor does the staff directly apply sunscreen to the campers.
- It is your responsibility to apply sunscreen on your child **prior** to camp and to educate your child on how to apply sunscreen. Please provide your child with a name labeled sunscreen bottle/spray **EACH DAY**.
- Sharing sunscreen is not permitted. **Check your child's sunscreen throughout the summer to see if they are running low and replace as needed.** Spray sunscreen as well as a face stick are recommended.
- We do not want campers missing out on activities if they do not have sunscreen.



Schedule



SWIMMING WILL TAKE PLACE DURING CAMP MONDAY, JUNE 9 - THURSDAY, AUGUST 7

*Please note these dates may be subject to change. Always refer to the emailed weekly schedules for exact daily plans.

Camp Rise:

Wednesday - Swimming at Big Surf

- Drop off at RecPlex at 9:00 AM

- Campers will be transported from RecPlex to Big Surf

- Swim 10:30 AM-12:00 PM, lunch 12:00-1:00

- Parent/Guardian Pick up at Big Surf Pool and/or Bandshell (behind pool) / Lions Rec Center at 1:00 PM

Camp Elevate:

Monday - Swimming at RecPlex, 1:00-2:30 PM

- Regular Drop off and Pick Up at RecPlex

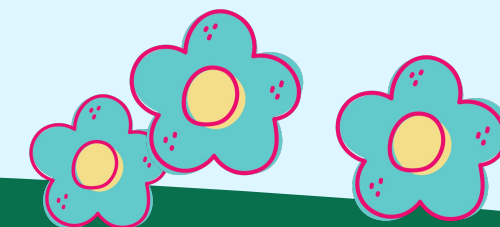
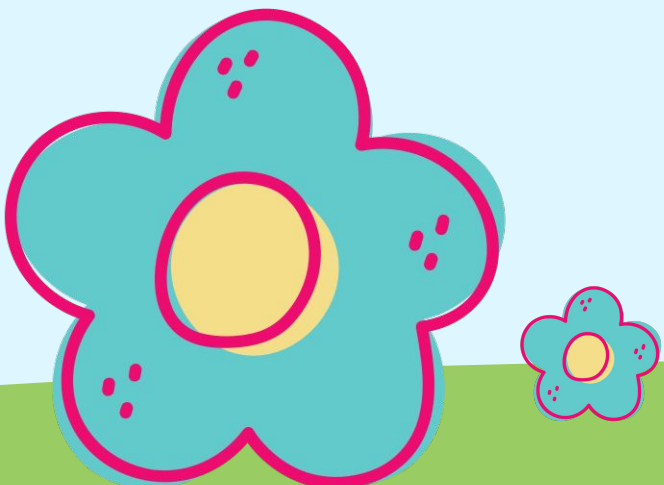
Wednesday - Swimming at Big Surf, 10:30 AM-12:00 PM

- Regular Drop off and Pick Up at RecPlex

- **Campers will be transported to Big Surf from RecPlex, and from Big Surf back to RecPlex

Thursday - Swimming at RecPlex, 1:00-2:30 PM

- Regular Drop off and Pick Up at RecPlex



Schedule

Camp Summit:

Monday - Swimming at Big Surf, 1:00-2:50 PM

- Regular Drop off at RecPlex
- 4:00 campers pick up at Big Surf
- 6:00 campers will be transported back to RecPlex after swimming

Wednesday - Swimming at Big Surf, 1:00-2:50 PM

- Regular Drop off at RecPlex
- 4:00 campers pick up at Big Surf
- 6:00 campers will be transported back to RecPlex after swimming

Thursday - Swimming at Big Surf, 1:20-3:00 PM

- Regular Drop off at RecPlex
- 4:00 campers pick up at Big Surf
- 6:00 campers will be transported back to RecPlex after swimming

Camp Quest:

Monday - Swimming at Big Surf, 1:00-2:50 PM

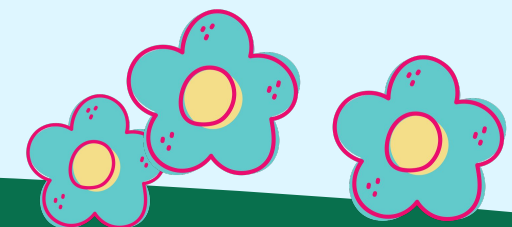
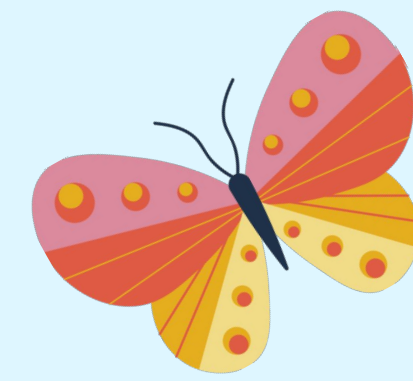
- Regular Drop off at Lions Rec Center
- Regular 4:00 pick up at Lions Rec Center
- Regular 6:00 pick up at RecPlex

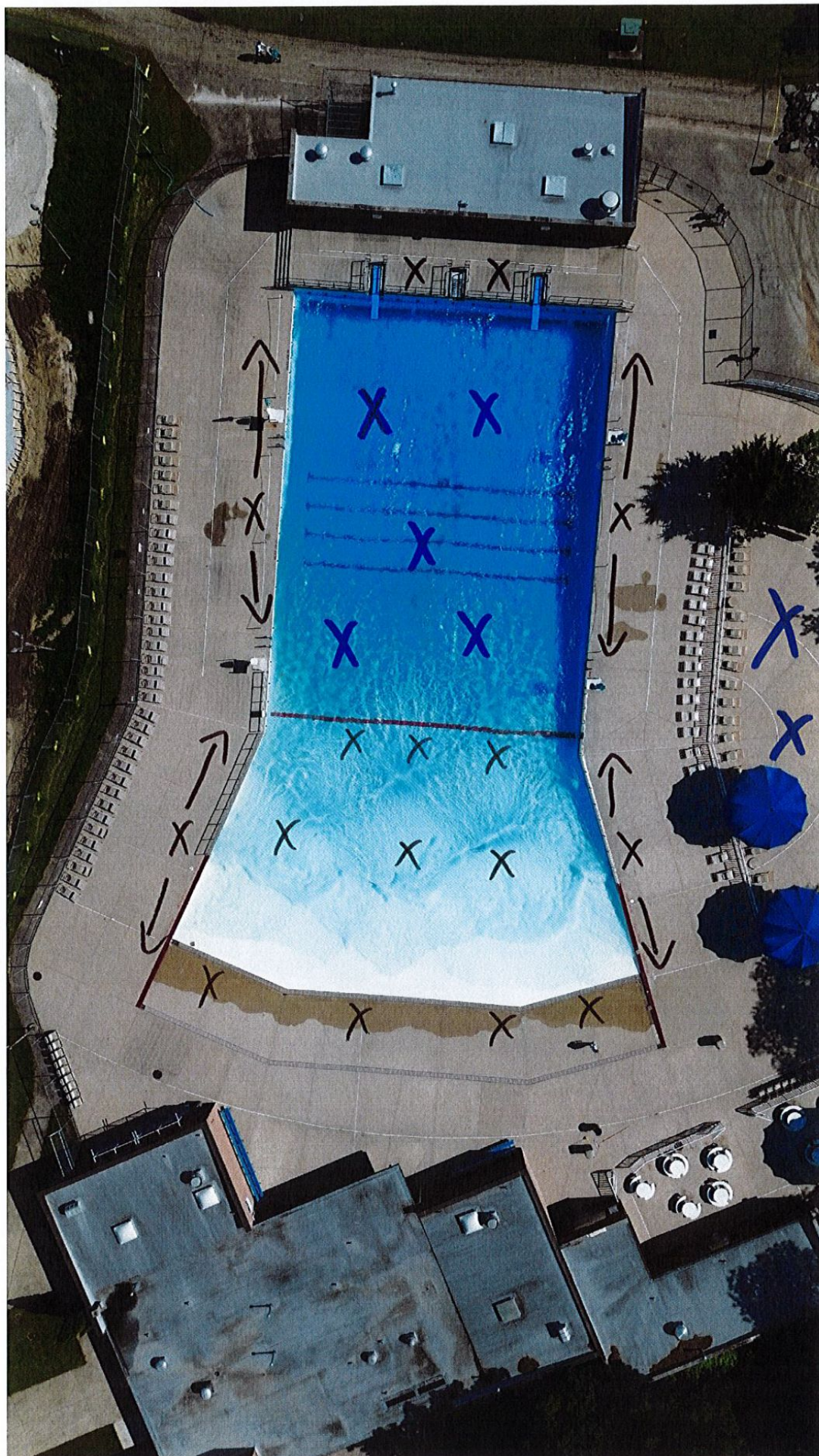
Wednesday - Swimming at Big Surf, 1:00-2:50 PM

- Regular Drop off at Lions Rec Center
- Regular 4:00 pick up at Lions Rec Center
- Regular 6:00 pick up at RecPlex

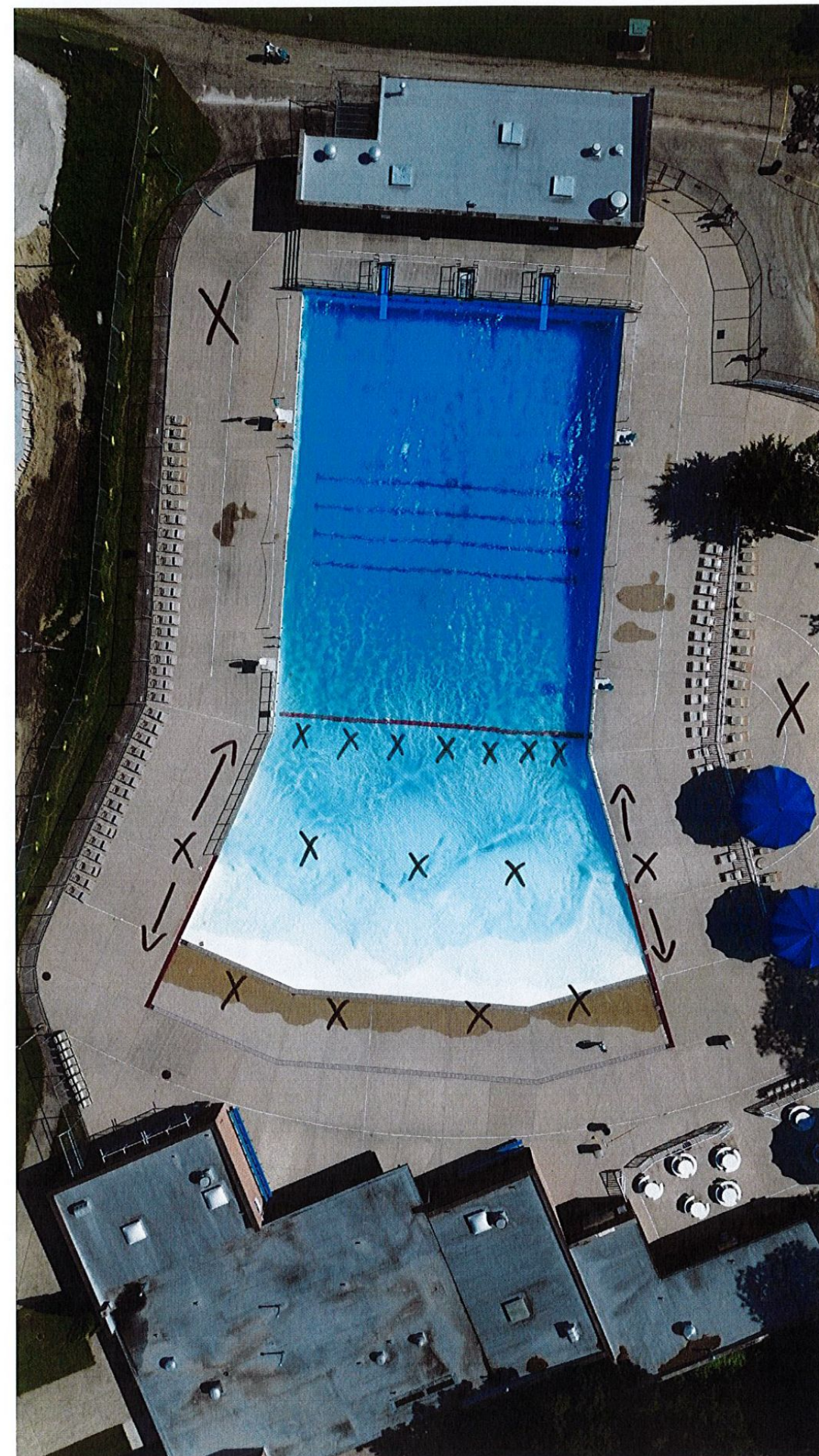
Thursday - Swimming at Big Surf, 1:20-3:00 PM

- Regular Drop off at Lions Rec Center
- Regular 4:00 pick up at Lions Rec Center
- Regular 6:00 pick up at RecPlex



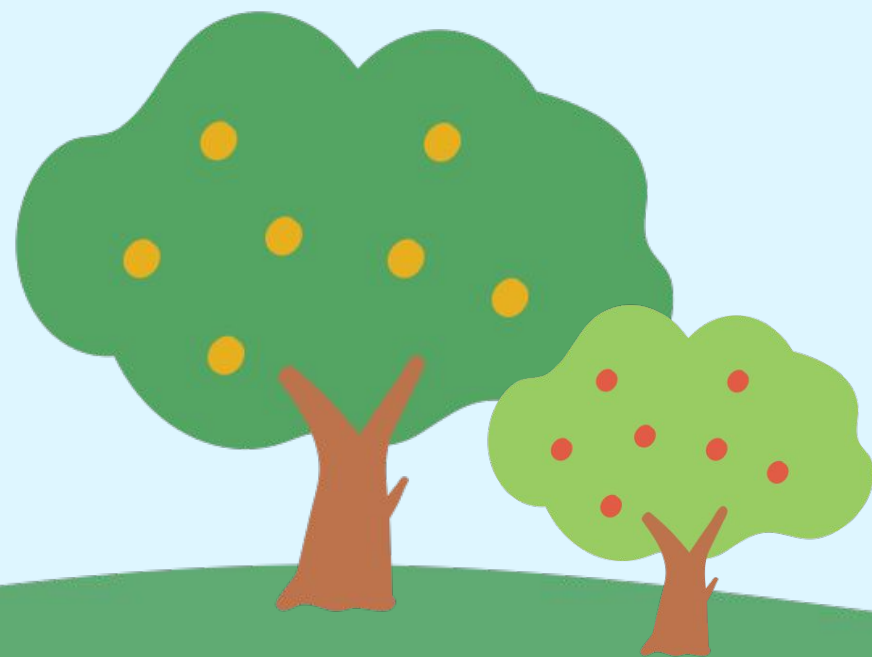
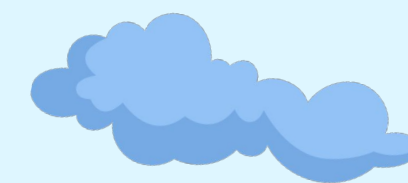
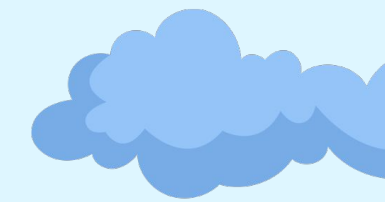


Summit
+
Quest



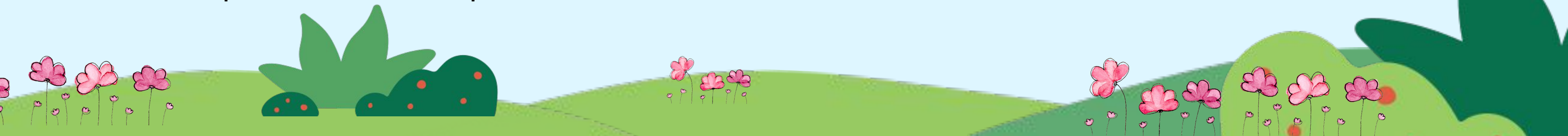
Elevate
+
Rise

Field Trips

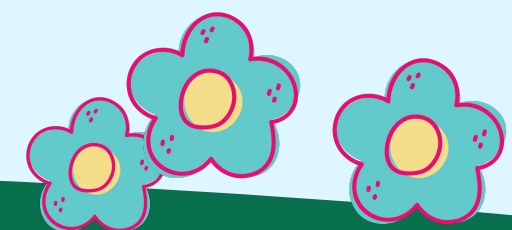
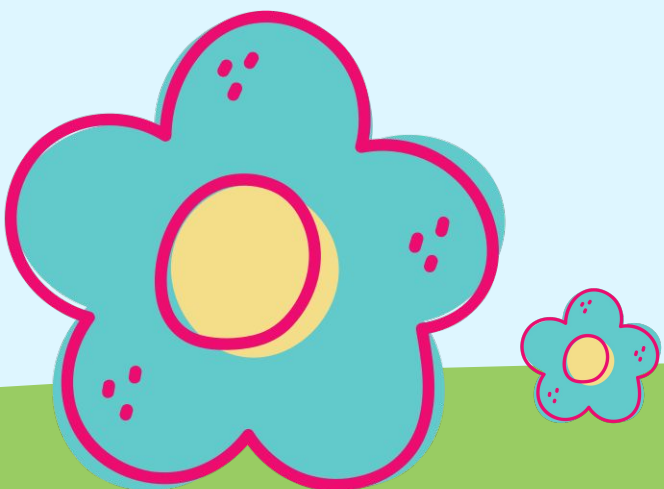
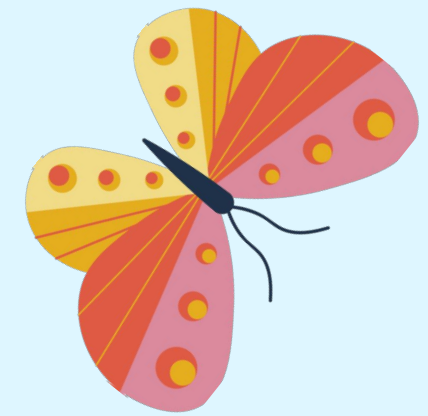
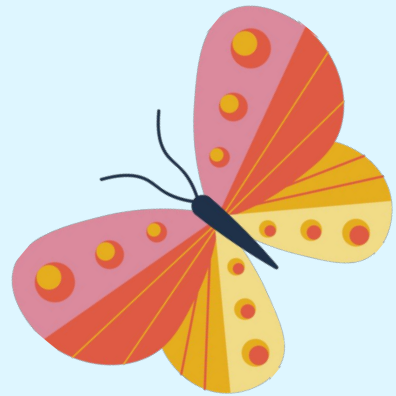


Field Trips

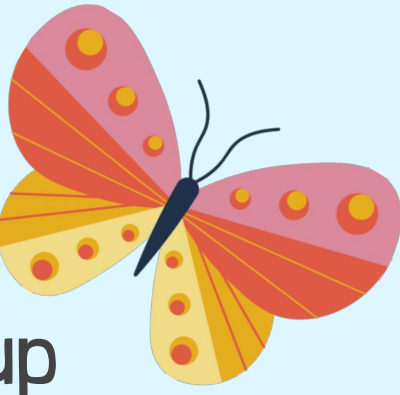
- The Field Trip schedule was posted to the MPPD website in February.
- Campers enrolled in Camp Elevate, Summit and Quest will all attend all day field trips. Camp Rise campers will occasionally take short, local, field trips.
- Field trips on registered weeks are not optional. There is no separate fee for the field trips, as they are embedded in the weekly registration cost.
- There are no “day switches” if you do not want your camper to attend the trip. There are also no “day additions” (ie - you are registered for MWF, and the field trip falls on a T/TH, you cannot add a single day).
- All campers will receive a Mint Green Summer Camp T-shirt within their first few days of camp (only one per summer will be issued). This shirt **MUST** be worn on field trip days. There are no exceptions. If you forget your shirt, your Webstore account will be charged \$8 for a new one.
- Yellow Wristbands - MPPD and Phone Number
- Campers will be transported via MPPD vehicles and/or school buses.



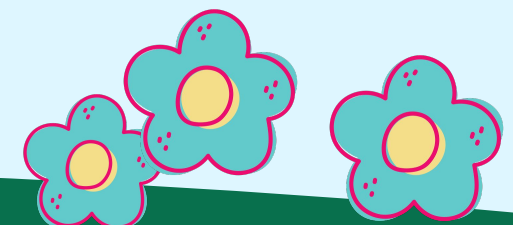
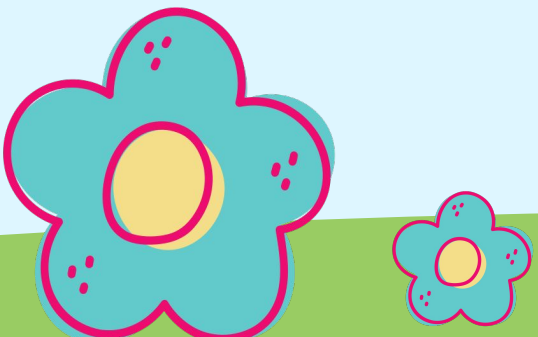
Medical / Behavioral Information



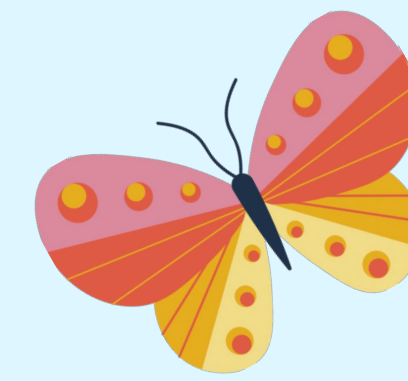
Medical



- Please do not send ill campers to camp. We will call home and asked that they are picked up within 15 minutes.
- The Park District does not employ any nurses, doctors or other staff who are licensed, certified, or trained to provide medical diagnoses or care to patrons. We are generally able to assist with the self-administration of medication (reviewing each particular request on a case-by-case basis), but we do not allow staff to diagnose medical situations or perform invasive or complex emergency procedures.
- Any medication, including Epi Pens or Inhalers, (over the counter or prescription) will need to be kept in the possession of the staff in the camp first aid bag. This will travel everywhere with the camper. Proper Permission to Dispense forms must also be completed (and reviewed prior to the camper starting, to ensure it is a reasonable accommodation) on your camper's ePACT account. Please remember to take back your medication at the end of the summer / last camp attendance day.



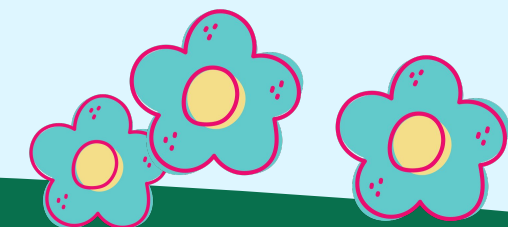
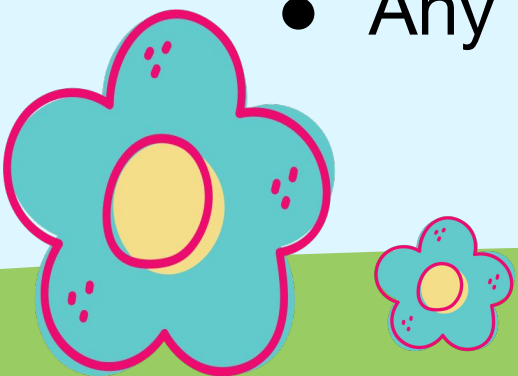
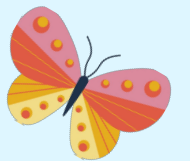
Behavioral

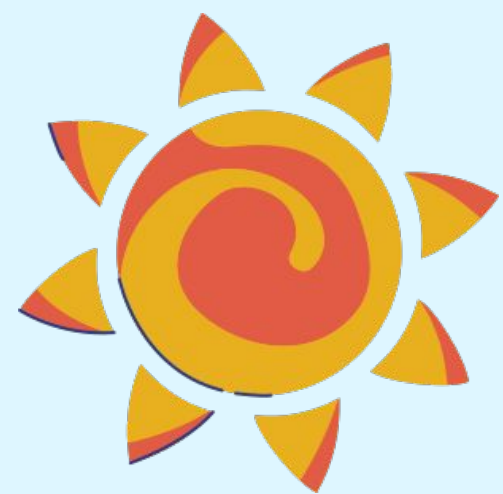


- Conduct report System - warning, parent meeting, dismissal
- Please review Camper & Parent Code of Conduct in Handbook

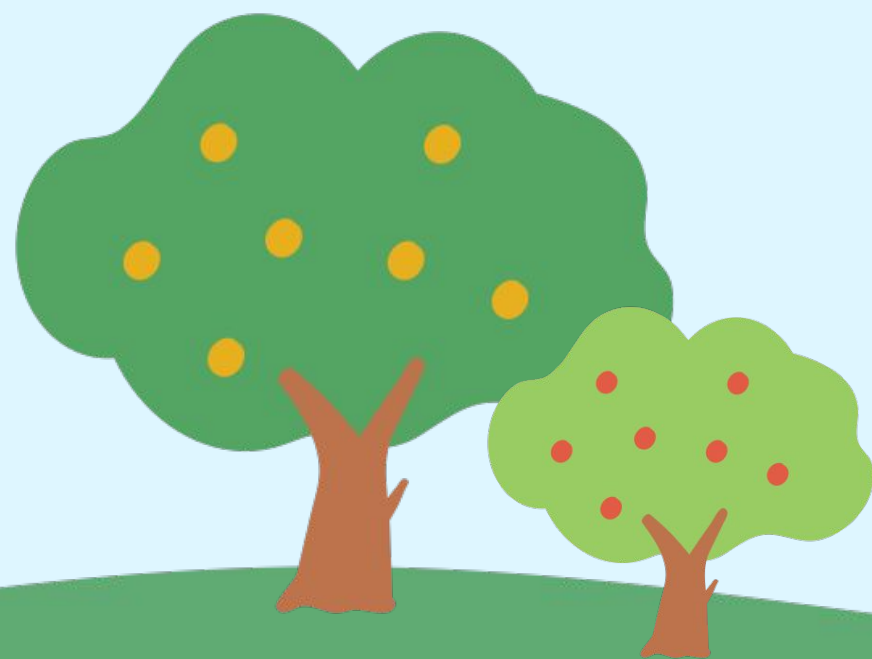
Below is a list of some of the **unacceptable behavior** not to be tolerated at camp and will result in a **CONDUCT REPORT OR DISMISSAL**.

- Bullying / Teasing
- Swearing
- Leaving the group without permission
- Imminent physical harm
- Biting or any other method of physical harm / aggression
- Stealing
- Destruction of property
- Derogatory remarks about other campers' appearance or abilities
- Constant antagonizing of other campers
- Disrespect towards a counselor
- Any behaviors the camp director warrants as inappropriate in a camp setting





Contacting Your Child's Camp



Contact Information

Cell Phones / Email addresses: (posted on each week's calendar as well)

Little Explorers - 224-374-6706 - youth4@mppd.org

Camp Rise - 224-374-3766 - youth2@mppd.org

Camp Elevate- 224-355-8672 - youth1@mppd.org

Camp Summit- 224-374-3368 - youth3@mppd.org

Camp Quest - 224-355-8425 - youth5@mppd.org

RecPlex Extended Care - youth6@mppd.org

Call or text the cell phones!

Kristina, Claire, Emily, Amy and Amanda's contact information are all in the Handbook!



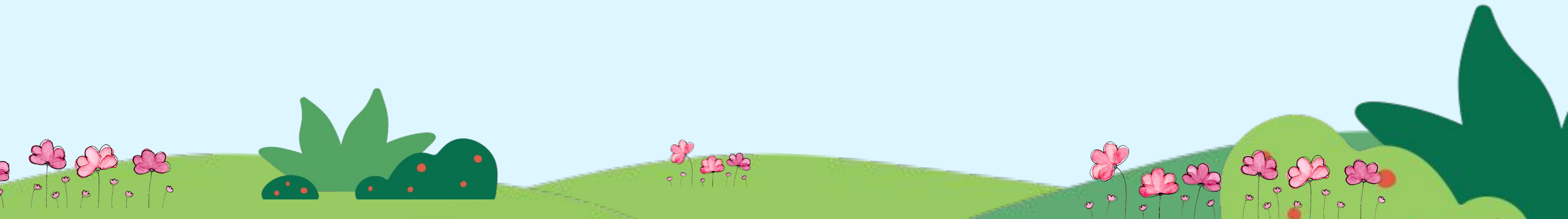
Day Camp Night!

Wednesday, July 23

5:30–7:30 PM

Lions Rec Center Bandshell

Games, crafts, dunk tank, bounce house, food trucks!





Questions?

Please make sure you have read the Parent Handbook as there are more specifics that we may not have covered tonight.

Directors are available for camp specific questions!

