

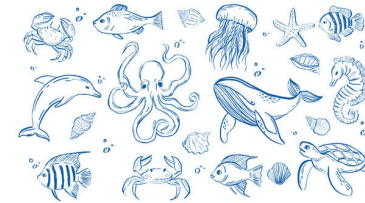
Camp Rise



- Camp day drop off is 9:00am
- Camp day pick up is 1:00pm
- Session Schedules can be found on www.mppd.org
- It is expected that your child is sent to camp healthy and symptom free
- Please send your child to camp every day with a LABELED snack for the morning, lunch/beverage, sunscreen and water bottle.
- Campers are NOT allowed to share sunscreen, and they will need to apply their own. (*Parents, apply sunscreen before camp and teach your child how to apply sunscreen on themselves.*)
- We encourage your campers to participate in dress up days. Please send a change of clothes if you wish.
- Please do **NOT** have your child bring toys or valuables; Mt. Prospect Park District is not responsible for lost or stolen items.
- **DAY CAMP NIGHT: July 22, 5:30pm-7:30pm at RecPlex**
- Stay in touch with us!
 - Call or text: (224) - 374 - 3766
 - Email: youth2@mppd.org
 - REMIND - Text 81010 @camp26rise or use code to join with app

Camp Director: Emma

June 8th - June 12th



Under The Sea

Monday, June 8th

Rotations: Jellyfish/Fish Craft, Ocean Animal Freeze Dance, Wave Jump

Tuesday, June 9th

Swimming at Meadows, 1401 E Gregory St

Campers should come wearing their swimsuit with clothes over.
Please pack: sunscreen, towel, a change of clothes, and bag for wet items, water bottle, and lunch.

Pick up will be at Meadows at 1:00pm (1401 E Gregory St)

Wednesday, June 10th

FIELD TRIP: Kids Empire, 619 E Dundee Rd, Palatine, IL

WAIVER IS REQUIRED FOR PLAY

Departing Recplex at 9:25am

Estimated Arrival at 12:20pm

-Bring Water Bottle, Lunch, Camp Shirt, wear **socks & closed toe shoes**

-Mint Green Camp shirts will be provided for the field trip!

Thursday, June 11th

Rotations: Coral Reef Painting, Shark Tag, Beach Ball Games

Friday, June 12th

Swimming at Meadows, 1401 E Gregory St

Campers should come wearing their swimsuit with clothes over.
Please pack: sunscreen, towel, a change of clothes, and bag for wet items, water bottle, and lunch.

Pick up will be at Meadows at 1:00pm (1401 E Gregory St)